

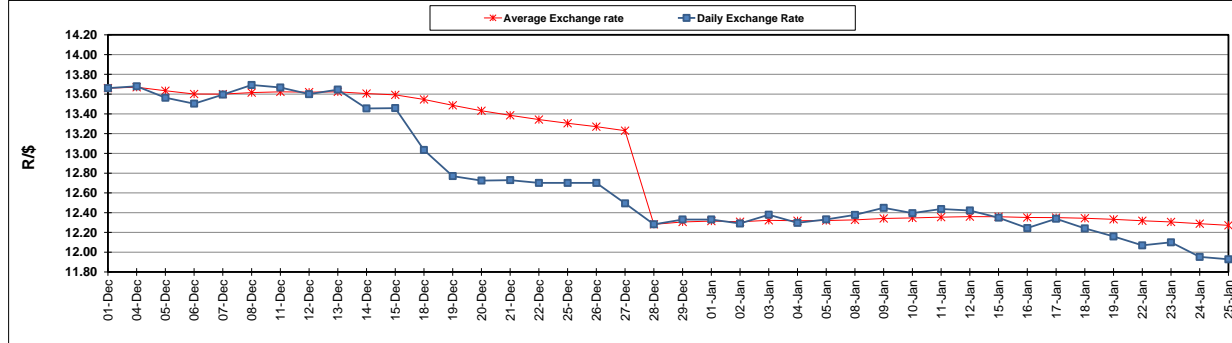
	PETROL 95 ULP	PETROL 93 ULP & LRP	DIESEL 0.05%	DIESEL 0.005%	ILL. PAR.
GAUTENG PUMP PRICE (SA c/l) AS FROM 04/01/2018	1 442.000	1 420.000	-	-	-
WHOLESALE PRICE (SA c/l) AS FROM 04/01/2018	-	-	1 273.630	1 276.030	837.388
SINGLE NATIONAL MAXIMUM RETAIL PRICE	-	-	-	-	1 082.000
BASIC FUEL PRICE - 25/01/2018 (SA c/l)	635.039	625.290	653.285	657.081	654.774
PRESS RELEASE CONTRIBUTION TO BFP 03/01/2018 - 25/01/2018 (SA c/l)	652.170	640.170	662.630	665.030	667.128
UNIT OVER/(UNDER) RECOVERY - 25/01/2018 (SA c/l)	17.131	14.880	9.345	7.949	12.354
AVERAGE BASIC FUEL PRICE 28/12/2017 - 25/01/2018	626.893	616.928	650.282	653.346	652.186
AVERAGE UNIT OVER/(UNDER) RECOVERY 28/12/2017 - 25/01/2018	31.753	28.766	16.538	16.637	20.275

ANALYSIS MOVEMENT OF AVERAGE OVER/(UNDER) RECOVERY

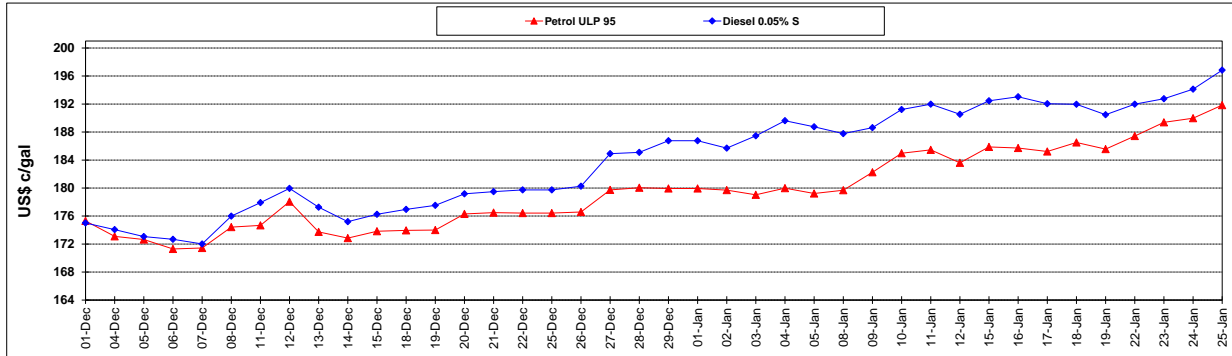
	PETROL 95	PETROL 93	DIESEL 0.05%	DIESEL 0.005%	ILL. PAR.
- MOVEMENT IN INTERNATIONAL PRODUCT PRICES	(17.211)	(19.420)	(34.253)	(34.394)	(30.665)
- MOVEMENT IN EXCHANGE RATE	48.964	48.186	50.791	51.030	50.940
AVERAGE UNIT OVER/(UNDER) RECOVERY 28/12/2017 - 25/01/2018	31.753	28.766	16.538	16.637	20.275

R/\$ EXCHANGE RATE - (R/\$ 11.9283 - 25/01/2018)

EXCHANGE RATE USED IN BASIC FUEL PRICE



INTERNATIONAL PRODUCT PRICES OF BASKET USED IN BASIC FUEL PRICE



BASIC FUEL PRICE IN SA CENTS PER LITRE

