

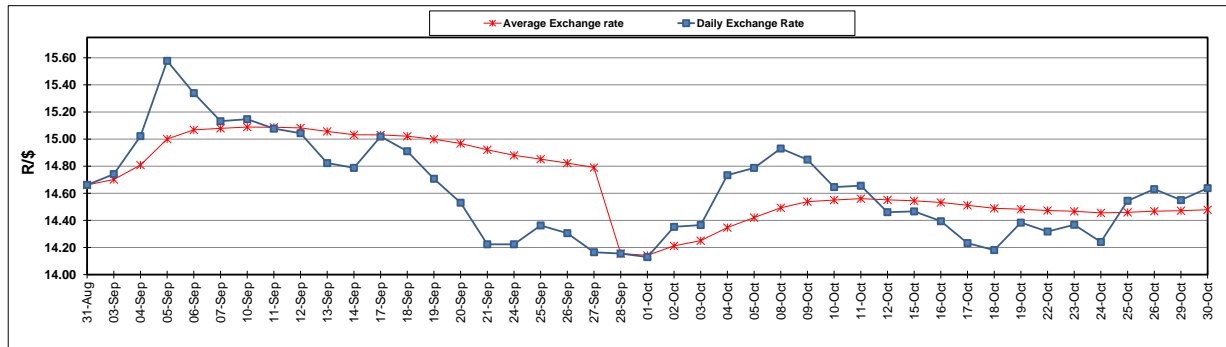
	PETROL 95 ULP	PETROL 93 ULP & LRP	DIESEL 0.05%	DIESEL 0.005%	ILL. PAR.
GAUTENG PUMP PRICE (SA c/l) AS FROM 03/10/2018	1 708.000	1 685.000	-	-	-
WHOLESALE PRICE (SA c/l) AS FROM 03/10/2018	-	-	1 564.830	1 569.230	1 057.088
SINGLE NATIONAL MAXIMUM RETAIL PRICE	-	-	-	-	1 372.000
BASIC FUEL PRICE - 30/10/2018 (SA c/l)	775.403	764.359	887.769	893.239	883.730
PRESS RELEASE CONTRIBUTION TO BFP 03/10/2018 - 30/10/2018 (SA c/l)	851.170	838.170	891.630	896.030	884.128
UNIT OVER/(UNDER) RECOVERY - 30/10/2018 (SA c/l)	75.767	73.811	3.861	2.791	0.398
AVERAGE BASIC FUEL PRICE 28/09/2018 - 30/10/2018	821.721	809.005	904.856	911.490	901.313
AVERAGE UNIT OVER/(UNDER) RECOVERY 28/09/2018 - 30/10/2018	16.405	16.252	(29.399)	(31.634)	(30.750)

ANALYSIS MOVEMENT OF AVERAGE OVER/(UNDER) RECOVERY

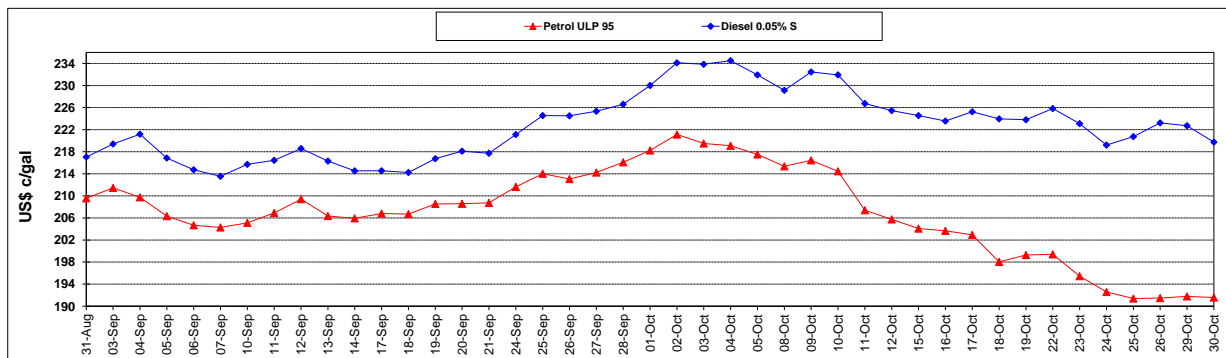
	PETROL 95	PETROL 93	DIESEL 0.05%	DIESEL 0.005%	ILL. PAR.
- MOVEMENT IN INTERNATIONAL PRODUCT PRICES	(1.256)	(1.136)	(48.849)	(51.225)	(50.122)
- MOVEMENT IN EXCHANGE RATE	17.662	17.388	19.449	19.591	19.372
AVERAGE UNIT OVER/(UNDER) RECOVERY 28/09/2018 - 30/10/2018	16.405	16.252	(29.399)	(31.634)	(30.750)

R/\$ EXCHANGE RATE - (R/\$14.6378 - 30/10/2018)

EXCHANGE RATE USED IN BASIC FUEL PRICE



INTERNATIONAL PRODUCT PRICES OF BASKET USED IN BASIC FUEL PRICE



BASIC FUEL PRICE IN SA CENTS PER LITRE

