

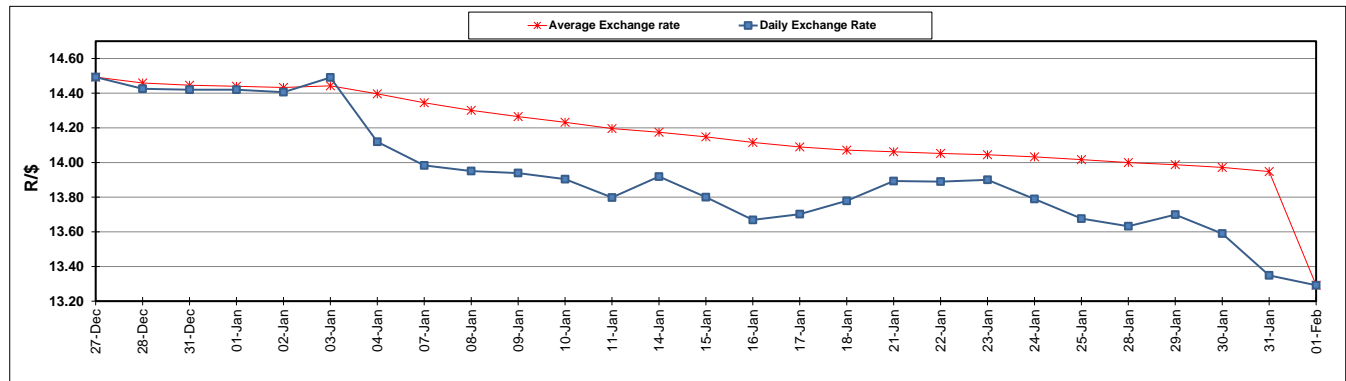
	PETROL 95 ULP	PETROL 93 ULP & LRP	DIESEL 0.05%	DIESEL 0.005%	ILL. PAR.
GAUTENG PUMP PRICE (SA c/l) AS FROM 06/02/2019	1 408.000	1 386.000	-	-	-
WHOLESALE PRICE (SA c/l) AS FROM 06/02/2019	-	-	1 314.420	1 318.820	823.678
SINGLE NATIONAL MAXIMUM RETAIL PRICE	-	-	-	-	1 060.000
BASIC FUEL PRICE - 01/02/2019 (SA c/l)	554.542	542.108	667.926	672.907	669.474
PRESS RELEASE CONTRIBUTION TO BFP 01/02/2019 - 01/02/2019 (SA c/l)	536.470	524.470	635.630	639.030	651.128
UNIT OVER/(UNDER) RECOVERY - 01/02/2019 (SA c/l)	(18.072)	(17.638)	(32.296)	(33.877)	(18.346)
AVERAGE BASIC FUEL PRICE 01/02/2019 - 01/02/2019	554.542	542.108	667.926	672.907	669.474
AVERAGE UNIT OVER/(UNDER) RECOVERY 01/02/2019 - 01/02/2019	(18.072)	(17.638)	(32.296)	(33.877)	(18.346)

ANALYSIS MOVEMENT OF AVERAGE OVER/(UNDER) RECOVERY

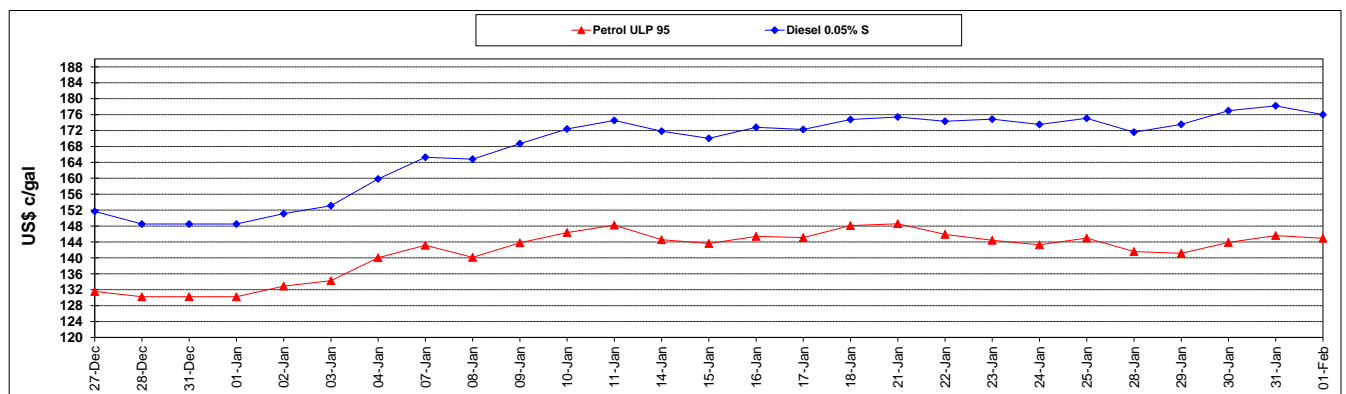
	PETROL 95	PETROL 93	DIESEL 0.05%	DIESEL 0.005%	ILL. PAR.
- MOVEMENT IN INTERNATIONAL PRODUCT PRICES	(46.429)	(45.360)	(66.452)	(68.287)	(52.581)
- MOVEMENT IN EXCHANGE RATE	28.357	27.722	34.156	34.410	34.235
AVERAGE UNIT OVER/(UNDER) RECOVERY 01/02/2019 - 01/02/2019	(18.072)	(17.638)	(32.296)	(33.877)	(18.346)

R/\$ EXCHANGE RATE - (R/\$13.2918 - 01/02/2019)

EXCHANGE RATE USED IN BASIC FUEL PRICE



INTERNATIONAL PRODUCT PRICES OF BASKET USED IN BASIC FUEL PRICE



BASIC FUEL PRICE IN SA CENTS PER LITRE

