

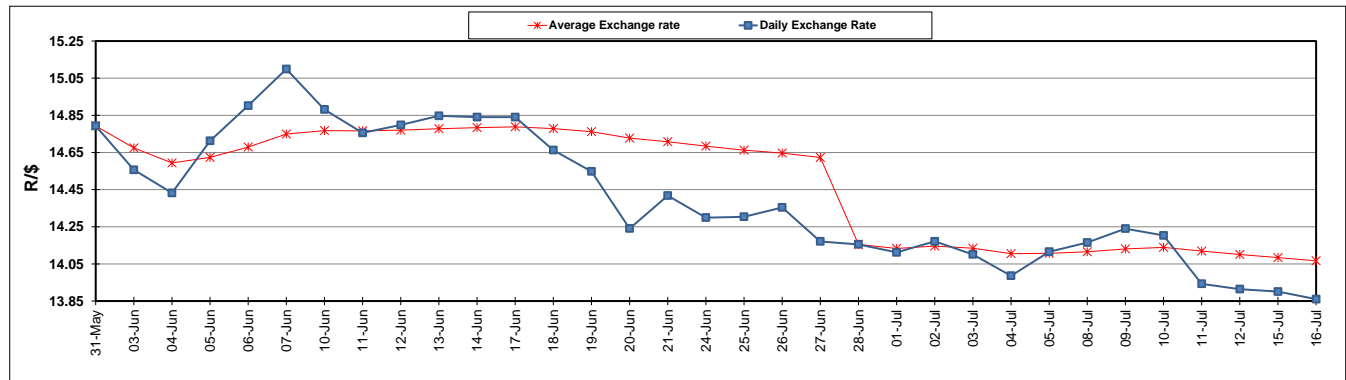
	PETROL 95 ULP	PETROL 93 ULP & LRP	DIESEL 0.05%	DIESEL 0.005%	ILL. PAR.
GAUTENG PUMP PRICE (SA c/l) AS FROM 03/07/2019	1 581.000	1 561.000	-	-	-
WHOLESALE PRICE (SA c/l) AS FROM 03/07/2019	-	-	1 446.500	1 451.900	916.678
SINGLE NATIONAL MAXIMUM RETAIL PRICE	-	-	-	-	1 165.000
BASIC FUEL PRICE - 16/07/2019 (SA c/l)	714.101	698.909	727.727	731.676	737.222
PRESS RELEASE CONTRIBUTION TO BFP 03/07/2019 - 16/07/2019 (SA c/l)	677.790	667.790	728.630	734.030	732.128
UNIT OVER/(UNDER) RECOVERY - 16/07/2019 (SA c/l)	(36.311)	(31.119)	0.903	2.354	(5.094)
AVERAGE BASIC FUEL PRICE 28/06/2019 - 16/07/2019	709.944	696.459	727.812	732.639	735.033
AVERAGE UNIT OVER/(UNDER) RECOVERY 28/06/2019 - 16/07/2019	(12.257)	(8.542)	16.049	16.853	10.249

ANALYSIS MOVEMENT OF AVERAGE OVER/(UNDER) RECOVERY

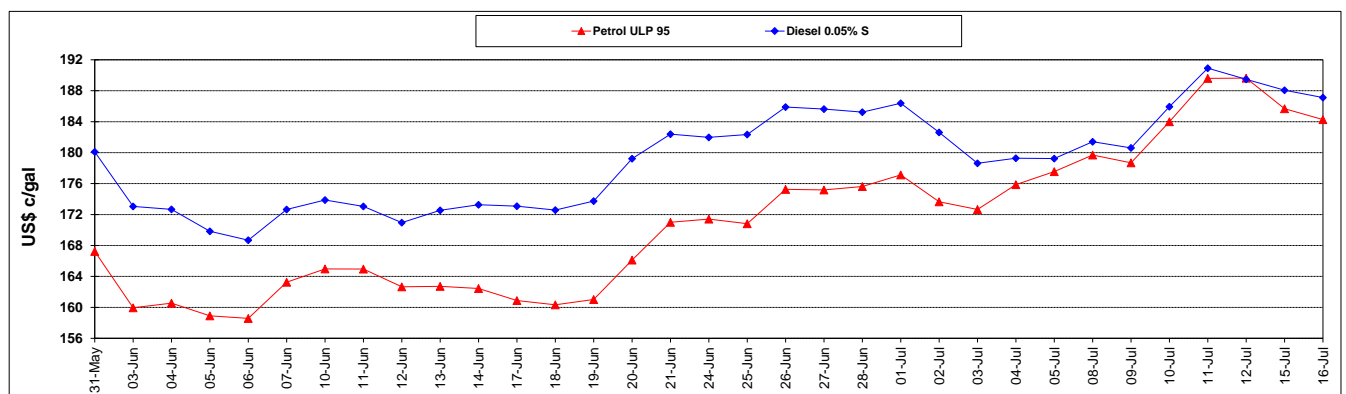
	PETROL 95	PETROL 93	DIESEL 0.05%	DIESEL 0.005%	ILL. PAR.
- MOVEMENT IN INTERNATIONAL PRODUCT PRICES	(40.318)	(36.069)	(12.718)	(12.105)	(18.804)
- MOVEMENT IN EXCHANGE RATE	28.061	27.528	28.767	28.958	29.053
AVERAGE UNIT OVER/(UNDER) RECOVERY 28/06/2019 - 16/07/2019	(12.257)	(8.542)	16.049	16.853	10.249

R/\$ EXCHANGE RATE - (R/\$13.8603 - 16/07/2019)

EXCHANGE RATE USED IN BASIC FUEL PRICE



INTERNATIONAL PRODUCT PRICES OF BASKET USED IN BASIC FUEL PRICE



BASIC FUEL PRICE IN SA CENTS PER LITRE

