

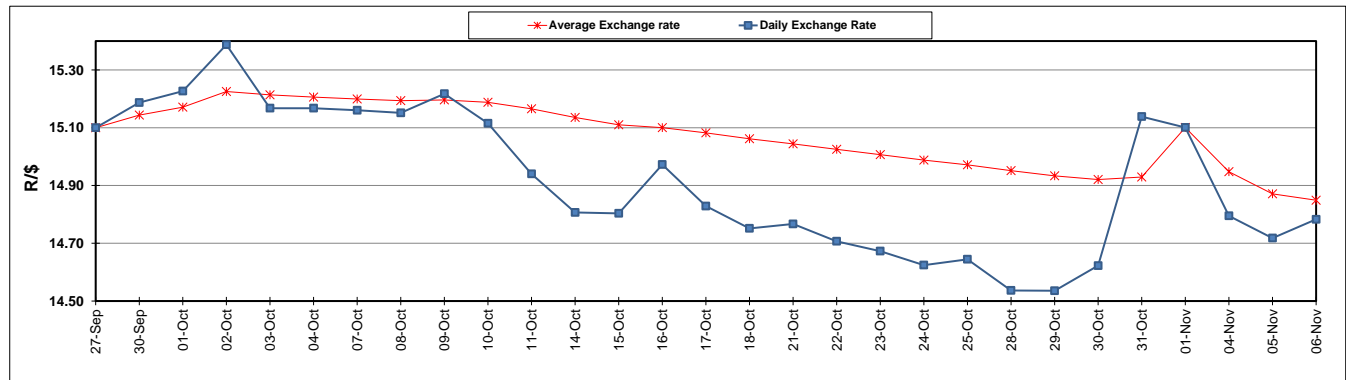
	PETROL 95 ULP	PETROL 93 ULP & LRP	DIESEL 0.05%	DIESEL 0.005%	ILL. PAR.
GAUTENG PUMP PRICE (SA c/l) AS FROM 06/11/2019	1,608.000	1,566.000	-	-	-
WHOLESALE PRICE (SA c/l) AS FROM 06/11/2019	-	-	1,468.210	1,474.610	938.678
SINGLE NATIONAL MAXIMUM RETAIL PRICE	-	-	-	-	1,197.000
BASIC FUEL PRICE - 06/11/2019 (SA c/l)	721.770	685.951	744.682	750.251	746.599
PRESS RELEASE CONTRIBUTION TO BFP 06/11/2019 - 06/11/2019 (SA c/l)	709.170	677.170	754.630	761.030	756.128
UNIT OVER/(UNDER) RECOVERY - 06/11/2019 (SA c/l)	(12.600)	(8.781)	9.948	10.779	9.529
AVERAGE BASIC FUEL PRICE 01/11/2019 - 06/11/2019	716.644	682.968	746.652	753.472	746.599
AVERAGE UNIT OVER/(UNDER) RECOVERY 01/11/2019 - 06/11/2019	2.276	3.952	19.978	18.058	26.779

### ANALYSIS MOVEMENT OF AVERAGE OVER/(UNDER) RECOVERY

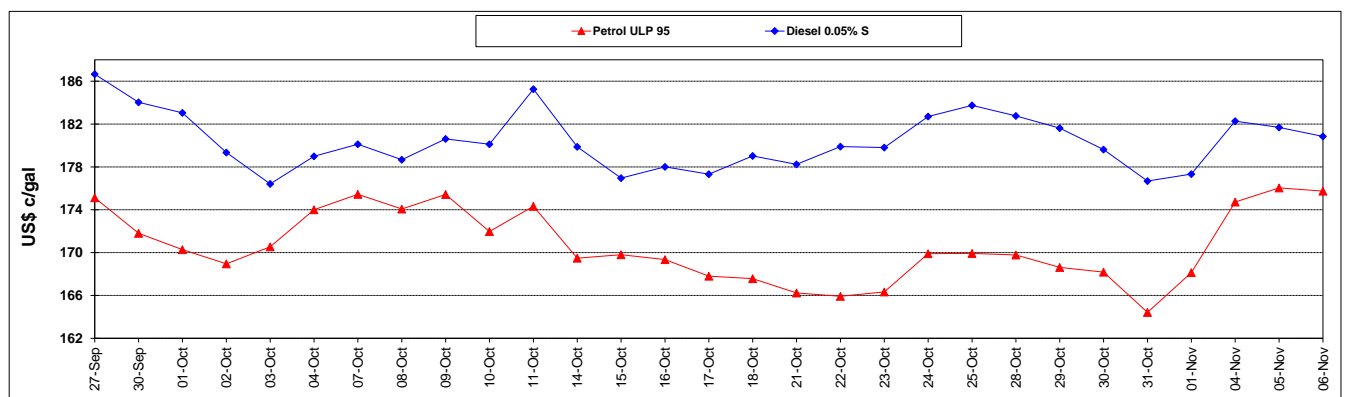
	PETROL 95	PETROL 93	DIESEL 0.05%	DIESEL 0.005%	ILL. PAR.
- MOVEMENT IN INTERNATIONAL PRODUCT PRICES	(1.595)	0.263	15.945	13.988	22.747
- MOVEMENT IN EXCHANGE RATE	3.871	3.689	4.033	4.070	4.032
AVERAGE UNIT OVER/(UNDER) RECOVERY 01/11/2019 - 06/11/2019	2.276	3.952	19.978	18.058	26.779

**R/\$ EXCHANGE RATE - (R/\$14.7829 - 06/11/2019)**

### EXCHANGE RATE USED IN BASIC FUEL PRICE



### INTERNATIONAL PRODUCT PRICES OF BASKET USED IN BASIC FUEL PRICE



### BASIC FUEL PRICE IN SA CENTS PER LITRE

