

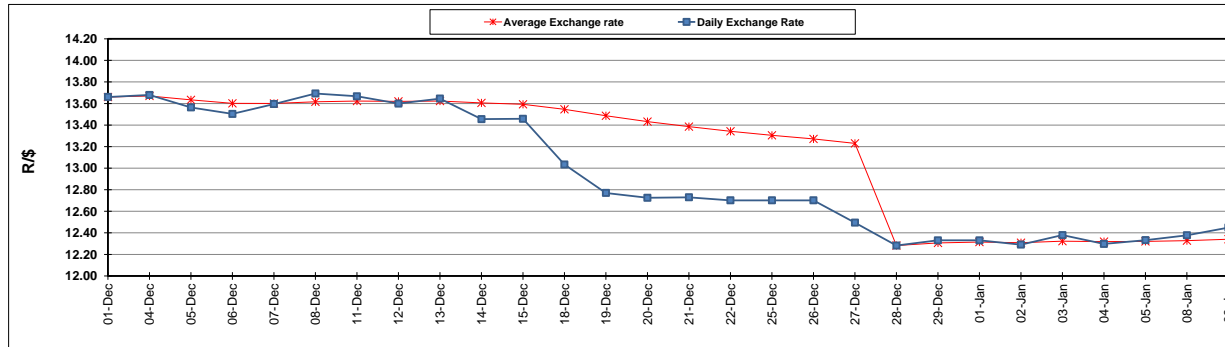
	PETROL 95 ULP	PETROL 93 ULP & LRP	DIESEL 0.05%	DIESEL 0.005%	ILL. PAR.
GAUTENG PUMP PRICE (SA c/l) AS FROM 03/01/2018	1 442.000	1 420.000	-	-	-
WHOLESALE PRICE (SA c/l) AS FROM 03/01/2018	-	-	1 273.630	1 276.030	837.388
SINGLE NATIONAL MAXIMUM RETAIL PRICE	-	-	-	-	1 082.000
BASIC FUEL PRICE - 09/01/2018 (SA c/l)	630.702	621.937	654.261	657.293	655.059
PRESS RELEASE CONTRIBUTION TO BFP 03/01/2018 - 09/01/2018 (SA c/l)	652.170	640.170	662.630	665.030	667.128
UNIT OVER/(UNDER) RECOVERY - 09/01/2018 (SA c/l)	21.468	18.233	8.369	7.737	12.069
AVERAGE BASIC FUEL PRICE 28/12/2017 - 09/01/2018	617.571	608.084	644.338	646.814	646.514
AVERAGE UNIT OVER/(UNDER) RECOVERY 28/12/2017 - 09/01/2018	49.710	44.975	28.070	29.771	33.059

ANALYSIS MOVEMENT OF AVERAGE OVER/(UNDER) RECOVERY

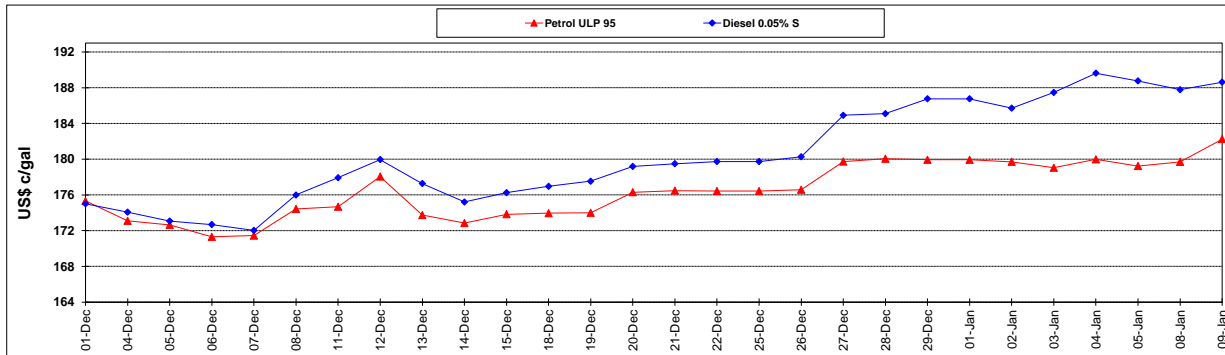
	PETROL 95	PETROL 93	DIESEL 0.05%	DIESEL 0.005%	ILL. PAR.
- MOVEMENT IN INTERNATIONAL PRODUCT PRICES	5.213	1.161	(18.356)	(16.832)	(13.525)
- MOVEMENT IN EXCHANGE RATE	44.497	43.814	46.426	46.604	46.583
AVERAGE UNIT OVER/(UNDER) RECOVERY 28/12/2017 - 09/01/2018	49.710	44.975	28.070	29.771	33.059

R/\$ EXCHANGE RATE - (R/\$ 12.4493 - 09/01/2018)

EXCHANGE RATE USED IN BASIC FUEL PRICE



INTERNATIONAL PRODUCT PRICES OF BASKET USED IN BASIC FUEL PRICE



BASIC FUEL PRICE IN SA CENTS PER LITRE

