

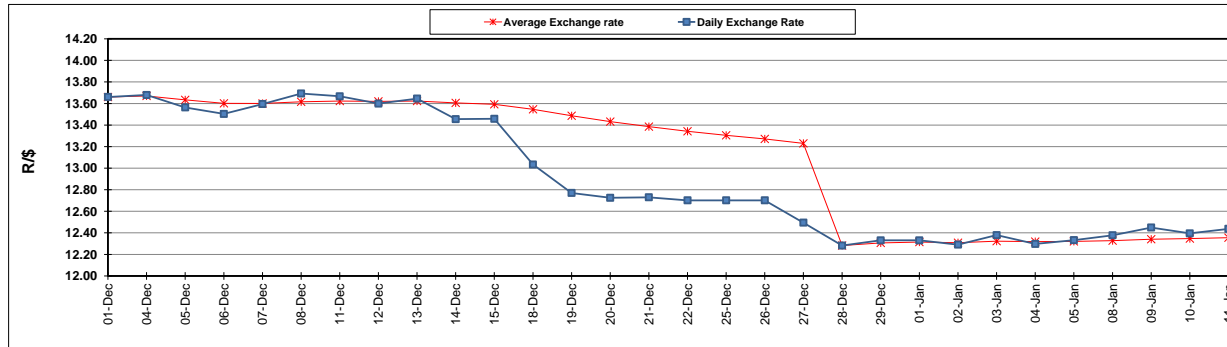
	PETROL 95 ULP	PETROL 93 ULP & LRP	DIESEL 0.05%	DIESEL 0.005%	ILL. PAR.
GAUTENG PUMP PRICE (SA c/l) AS FROM 03/01/2018	1 442.000	1 420.000	-	-	-
WHOLESALE PRICE (SA c/l) AS FROM 03/01/2018	-	-	1 273.630	1 276.030	837.388
SINGLE NATIONAL MAXIMUM RETAIL PRICE	-	-	-	-	1 082.000
BASIC FUEL PRICE - 11/012018 (SA c/l)	640.680	630.920	664.693	667.695	667.250
PRESS RELEASE CONTRIBUTION TO BFP 03/01/2018 - 11/012018 (SA c/l)	652.170	640.170	662.630	665.030	667.128
UNIT OVER/(UNDER) RECOVERY - 11/012018 (SA c/l)	11.490	9.250	(2.063)	(2.665)	(0.122)
AVERAGE BASIC FUEL PRICE 28/12/2017 - 11/012018	621.434	611.900	647.611	650.179	649.758
AVERAGE UNIT OVER/(UNDER) RECOVERY 28/12/2017 - 11/012018	43.100	38.815	23.019	24.305	27.552

ANALYSIS MOVEMENT OF AVERAGE OVER/(UNDER) RECOVERY

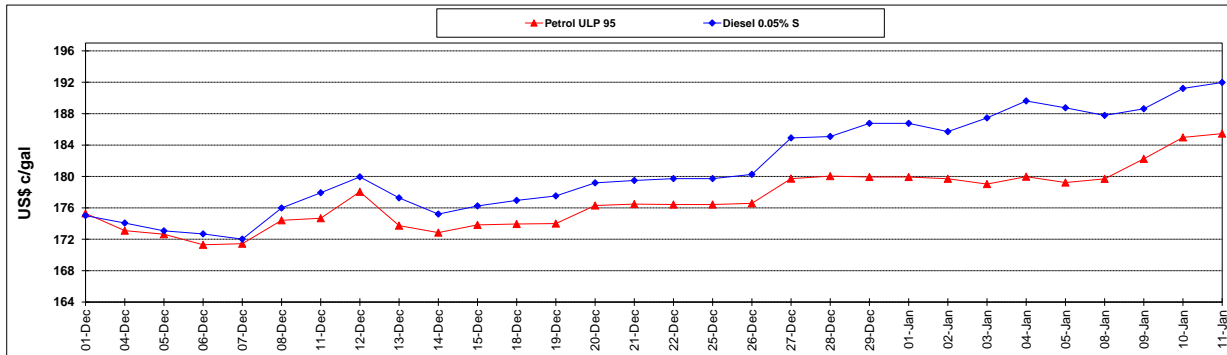
	PETROL 95	PETROL 93	DIESEL 0.05%	DIESEL 0.005%	ILL. PAR.
- MOVEMENT IN INTERNATIONAL PRODUCT PRICES	(0.942)	(4.551)	(22.878)	(21.773)	(18.498)
- MOVEMENT IN EXCHANGE RATE	44.042	43.366	45.897	46.079	46.050
AVERAGE UNIT OVER/(UNDER) RECOVERY 28/12/2017 - 11/012018	43.100	38.815	23.019	24.305	27.552

R/\$ EXCHANGE RATE - (R/\$ 12.4368 - 11/012018)

EXCHANGE RATE USED IN BASIC FUEL PRICE



INTERNATIONAL PRODUCT PRICES OF BASKET USED IN BASIC FUEL PRICE



BASIC FUEL PRICE IN SA CENTS PER LITRE

