

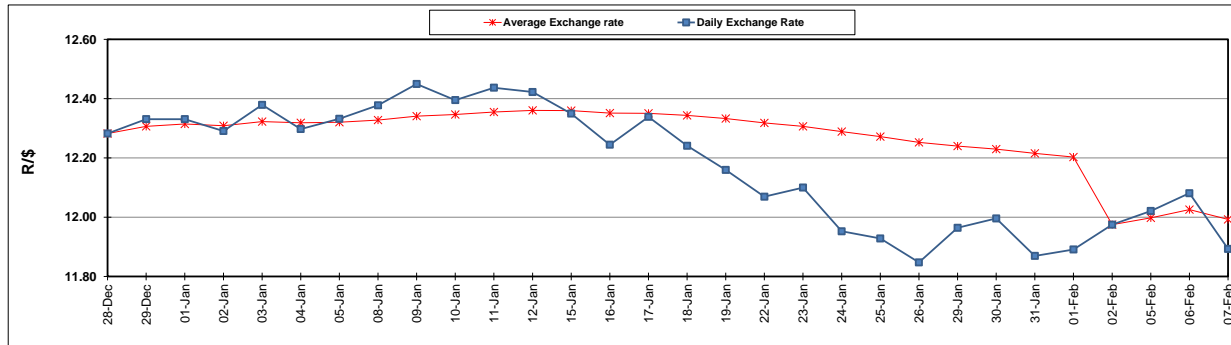
	PETROL 95 ULP	PETROL 93 ULP & LRP	DIESEL 0.05%	DIESEL 0.005%	ILL. PAR.
GAUTENG PUMP PRICE (SA c/l) AS FROM 07/02/2018	1 412.000	1 419.000	-	-	-
WHOLESALE PRICE (SA c/l) AS FROM 07/02/2018	-	-	1 256.630	1 259.030	818.388
SINGLE NATIONAL MAXIMUM RETAIL PRICE	-	-	-	-	1 056.000
BASIC FUEL PRICE - 07/02/2018 (SA c/l)	608.360	594.976	617.048	621.757	637.340
PRESS RELEASE CONTRIBUTION TO BFP 07/02/2018 - 07/02/2018 (SA c/l)	622.170	610.170	645.630	648.030	648.128
UNIT OVER/(UNDER) RECOVERY - 07/02/2018 (SA c/l)	13.810	15.194	28.582	26.273	10.788
AVERAGE BASIC FUEL PRICE 02/02/2018 - 07/02/2018	627.697	613.286	635.943	640.695	653.331
AVERAGE UNIT OVER/(UNDER) RECOVERY 02/02/2018 - 07/02/2018	16.973	19.384	22.437	20.086	9.047

ANALYSIS MOVEMENT OF AVERAGE OVER/(UNDER) RECOVERY

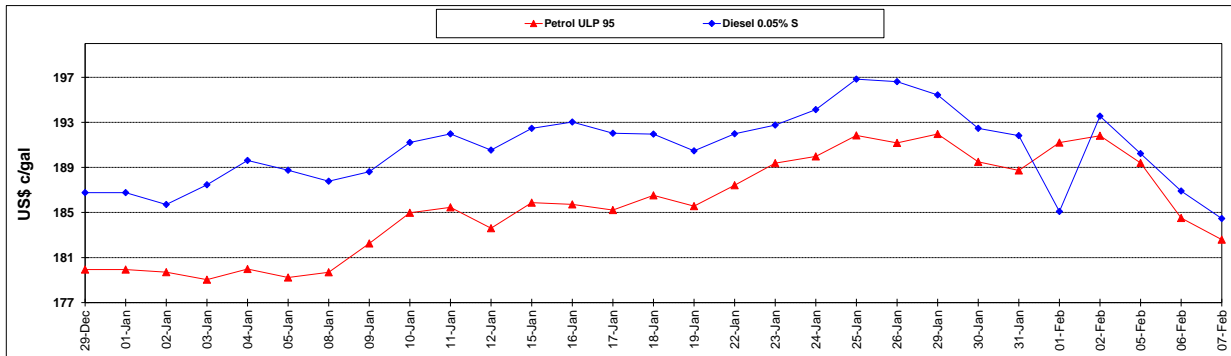
	PETROL 95	PETROL 93	DIESEL 0.05%	DIESEL 0.005%	ILL. PAR.
- MOVEMENT IN INTERNATIONAL PRODUCT PRICES	5.960	8.624	11.280	8.844	(2.415)
- MOVEMENT IN EXCHANGE RATE	11.013	10.760	11.157	11.241	11.462
AVERAGE UNIT OVER/(UNDER) RECOVERY 02/02/2018 - 07/02/2018	16.973	19.384	22.437	20.086	9.047

R/\$ EXCHANGE RATE - (R/\$ 11.8930 - 07/02/2018)

EXCHANGE RATE USED IN BASIC FUEL PRICE



INTERNATIONAL PRODUCT PRICES OF BASKET USED IN BASIC FUEL PRICE



BASIC FUEL PRICE IN SA CENTS PER LITRE

