

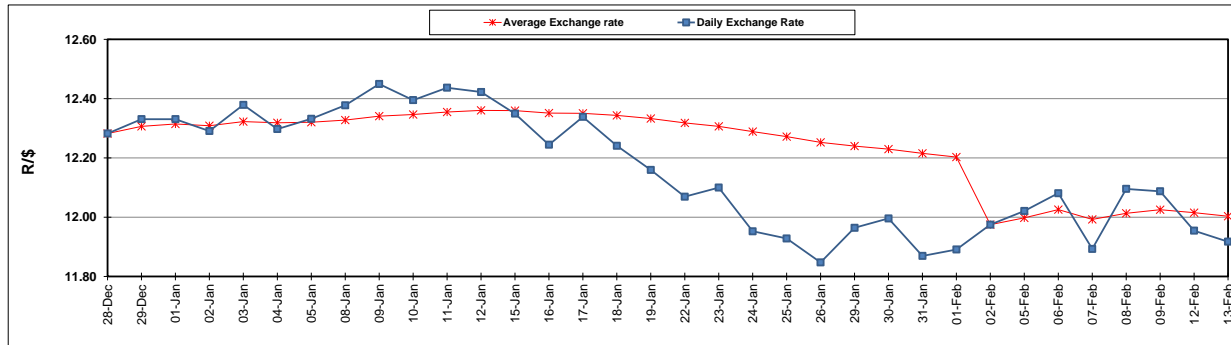
	PETROL 95 ULP	PETROL 93 ULP & LRP	DIESEL 0.05%	DIESEL 0.005%	ILL. PAR.
GAUTENG PUMP PRICE (SA c/l) AS FROM 07/02/2018	1 412.000	1 419.000	-	-	-
WHOLESALE PRICE (SA c/l) AS FROM 07/02/2018	-	-	1 256.630	1 259.030	818.388
SINGLE NATIONAL MAXIMUM RETAIL PRICE	-	-	-	-	1 056.000
BASIC FUEL PRICE - 13/02/2018 (SA c/l)	570.375	555.760	579.536	583.726	603.084
PRESS RELEASE CONTRIBUTION TO BFP 07/02/2018 - 13/02/2018 (SA c/l)	622.170	610.170	645.630	648.030	648.128
UNIT OVER/(UNDER) RECOVERY - 13/02/2018 (SA c/l)	51.795	54.410	66.094	64.304	45.044
AVERAGE BASIC FUEL PRICE 02/02/2018 - 13/02/2018	607.734	593.084	615.660	620.100	634.746
AVERAGE UNIT OVER/(UNDER) RECOVERY 02/02/2018 - 13/02/2018	25.686	28.336	36.346	34.305	20.508

ANALYSIS MOVEMENT OF AVERAGE OVER/(UNDER) RECOVERY

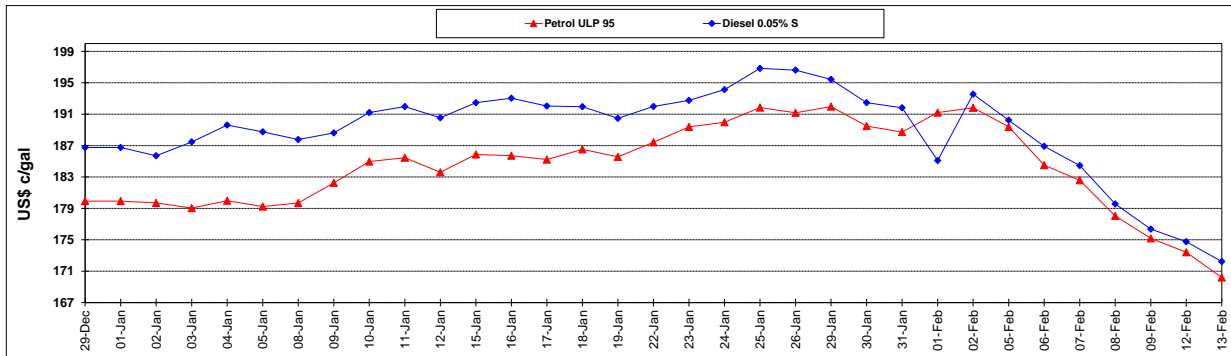
	PETROL 95	PETROL 93	DIESEL 0.05%	DIESEL 0.005%	ILL. PAR.
- MOVEMENT IN INTERNATIONAL PRODUCT PRICES	15.570	18.464	26.097	23.983	9.941
- MOVEMENT IN EXCHANGE RATE	10.116	9.872	10.248	10.322	10.566
AVERAGE UNIT OVER/(UNDER) RECOVERY 02/02/2018 - 13/02/2018	25.686	28.336	36.346	34.305	20.508

R/\$ EXCHANGE RATE - (R/\$ 11.9175 - 13/02/2018)

EXCHANGE RATE USED IN BASIC FUEL PRICE



INTERNATIONAL PRODUCT PRICES OF BASKET USED IN BASIC FUEL PRICE



BASIC FUEL PRICE IN SA CENTS PER LITRE

