

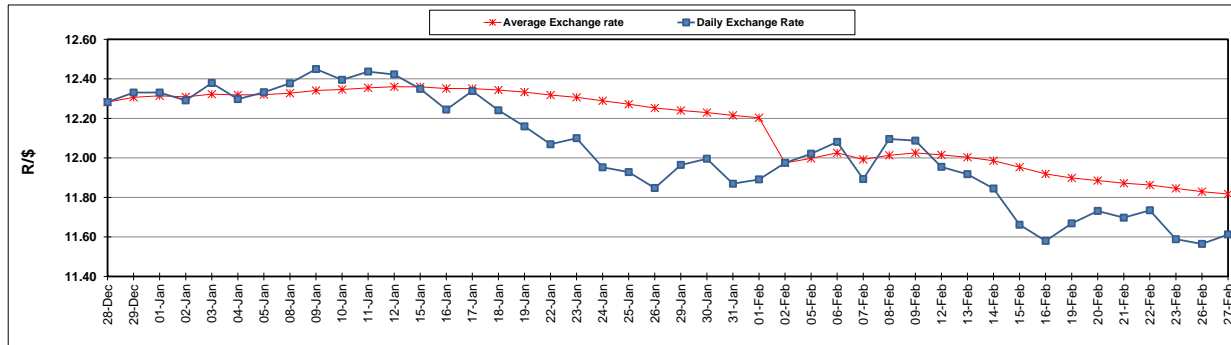
	PETROL 95 ULP	PETROL 93 ULP & LRP	DIESEL 0.05%	DIESEL 0.005%	ILL. PAR.
GAUTENG PUMP PRICE (SA c/l) AS FROM 07/02/2018	1 412.000	1 419.000	-	-	-
WHOLESALE PRICE (SA c/l) AS FROM 07/02/2018	-	-	1 256.630	1 259.030	818.388
SINGLE NATIONAL MAXIMUM RETAIL PRICE	-	-	-	-	1 056.000
BASIC FUEL PRICE - 27/02/2018 (SA c/l)	591.659	578.392	607.801	612.458	640.379
PRESS RELEASE CONTRIBUTION TO BFP 07/02/2018 - 27/02/2018 (SA c/l)	622.170	610.170	645.630	648.030	648.128
UNIT OVER/(UNDER) RECOVERY - 27/02/2018 (SA c/l)	30.511	31.778	37.829	35.572	7.749
AVERAGE BASIC FUEL PRICE 02/02/2018 - 27/02/2018	591.730	577.630	602.618	607.157	627.445
AVERAGE UNIT OVER/(UNDER) RECOVERY 02/02/2018 - 27/02/2018	35.440	37.540	45.845	43.706	23.849

ANALYSIS MOVEMENT OF AVERAGE OVER/(UNDER) RECOVERY

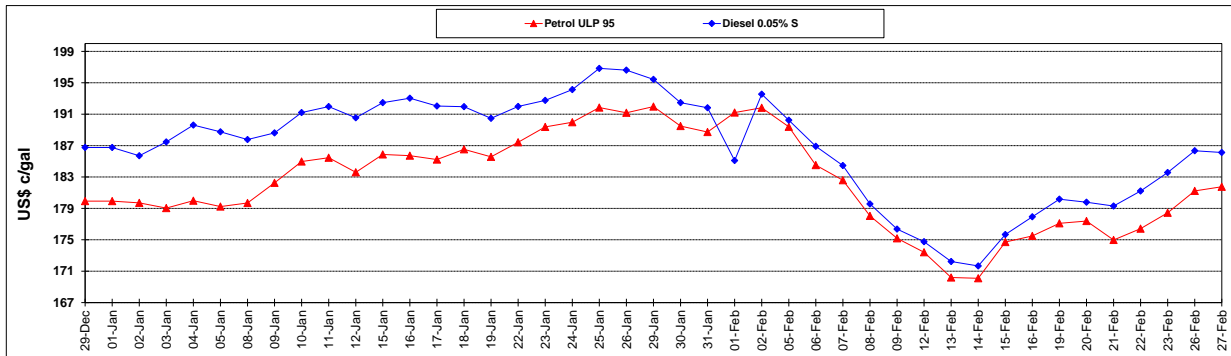
	PETROL 95	PETROL 93	DIESEL 0.05%	DIESEL 0.005%	ILL. PAR.
- MOVEMENT IN INTERNATIONAL PRODUCT PRICES	16.127	18.687	26.176	23.889	3.371
- MOVEMENT IN EXCHANGE RATE	19.313	18.853	19.669	19.817	20.479
AVERAGE UNIT OVER/(UNDER) RECOVERY 02/02/2018 - 27/02/2018	35.440	37.540	45.845	43.706	23.849

R/\$ EXCHANGE RATE - (R/\$11.6125 - 27/02/2018)

EXCHANGE RATE USED IN BASIC FUEL PRICE



INTERNATIONAL PRODUCT PRICES OF BASKET USED IN BASIC FUEL PRICE



BASIC FUEL PRICE IN SA CENTS PER LITRE

