

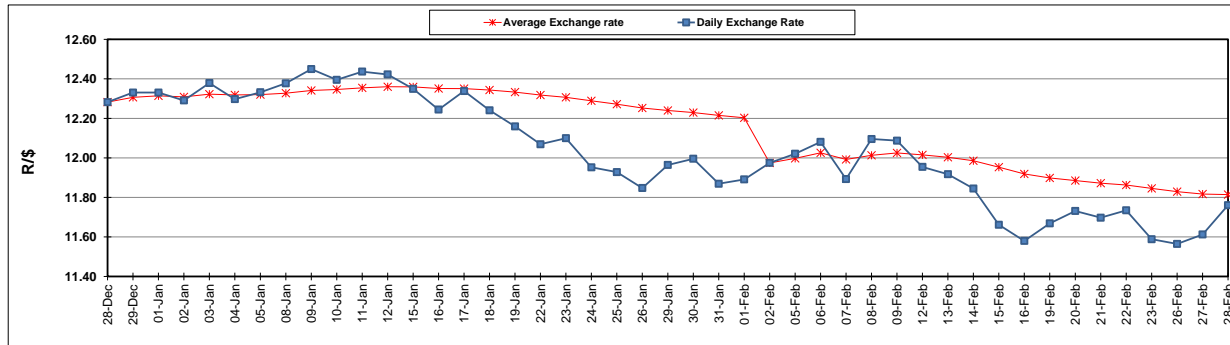
	PETROL 95 ULP	PETROL 93 ULP & LRP	DIESEL 0.05%	DIESEL 0.005%	ILL. PAR.
GAUTENG PUMP PRICE (SA c/l) AS FROM 07/02/2018	1 412.000	1 419.000	-	-	-
WHOLESALE PRICE (SA c/l) AS FROM 07/02/2018	-	-	1 256.630	1 259.030	818.388
SINGLE NATIONAL MAXIMUM RETAIL PRICE	-	-	-	-	1 056.000
BASIC FUEL PRICE - 28/02/2018 (SA c/l)	592.112	579.767	602.650	607.021	635.846
PRESS RELEASE CONTRIBUTION TO BFP 07/02/2018 - 28/02/2018 (SA c/l)	622.170	610.170	645.630	648.030	648.128
UNIT OVER/(UNDER) RECOVERY - 28/02/2018 (SA c/l)	30.058	30.403	42.980	41.009	12.282
AVERAGE BASIC FUEL PRICE 02/02/2018 - 28/02/2018	591.750	577.742	602.620	607.150	627.888
AVERAGE UNIT OVER/(UNDER) RECOVERY 02/02/2018 - 28/02/2018	35.156	37.165	45.695	43.564	23.240

ANALYSIS MOVEMENT OF AVERAGE OVER/(UNDER) RECOVERY

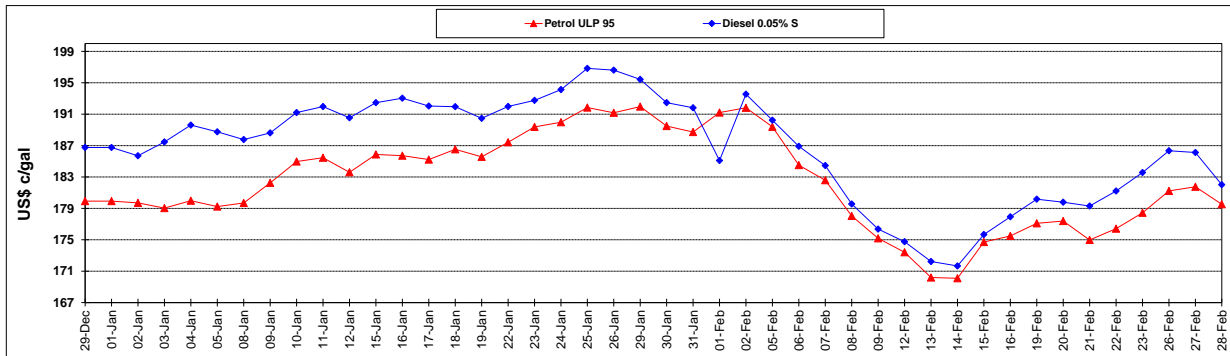
	PETROL 95	PETROL 93	DIESEL 0.05%	DIESEL 0.005%	ILL. PAR.
- MOVEMENT IN INTERNATIONAL PRODUCT PRICES	15.693	18.162	25.872	23.593	2.587
- MOVEMENT IN EXCHANGE RATE	19.464	19.003	19.822	19.971	20.653
AVERAGE UNIT OVER/(UNDER) RECOVERY 02/02/2018 - 28/02/2018	35.156	37.165	45.695	43.564	23.240

R/\$ EXCHANGE RATE - (R/\$11.7610 - 28/02/2018)

EXCHANGE RATE USED IN BASIC FUEL PRICE



INTERNATIONAL PRODUCT PRICES OF BASKET USED IN BASIC FUEL PRICE



BASIC FUEL PRICE IN SA CENTS PER LITRE

