

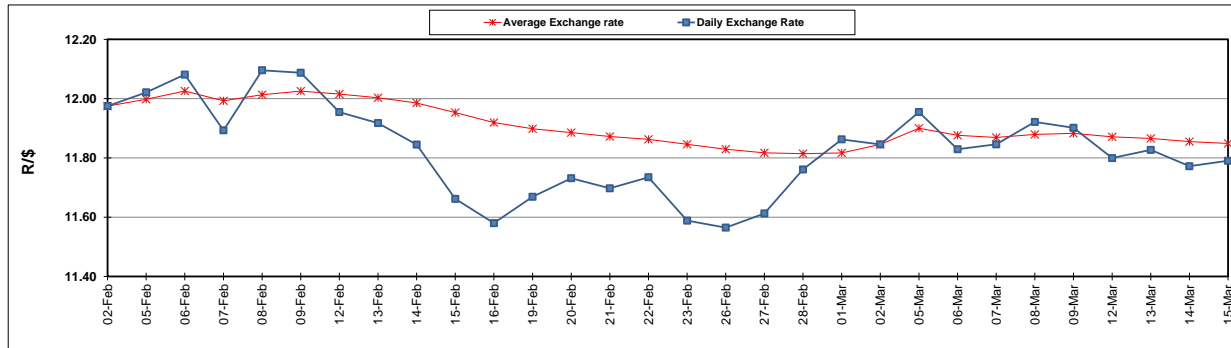
|  | PETROL 95<br>ULP | PETROL 93<br>ULP & LRP | DIESEL<br>0.05% | DIESEL<br>0.005% | ILL. PAR. |
|--|------------------|------------------------|-----------------|------------------|-----------|
| GAUTENG PUMP PRICE (SA c/l) AS FROM 07/03/2018                     | 1 376.000        | 1 354.000              | -               | -                | -         |
| WHOLESALE PRICE (SA c/l) AS FROM 07/03/2018                        | -                | -                      | 1 209.630       | 1 215.030        | 795.388   |
| SINGLE NATIONAL MAXIMUM RETAIL PRICE                               | -                | -                      | -               | -                | 1 026.000 |
| BASIC FUEL PRICE - 15/03/2018 (SA c/l)                             | 594.381          | 580.459                | 599.669         | 604.934          | 603.534   |
| PRESS RELEASE CONTRIBUTION TO BFP 07/03/2018 - 15/03/2018 (SA c/l) | 586.170          | 574.170                | 598.630         | 604.030          | 625.128   |
| UNIT OVER/(UNDER) RECOVERY - 15/03/2018 (SA c/l)                   | (8.211)          | (6.289)                | (1.039)         | (0.904)          | 21.594    |
| AVERAGE BASIC FUEL PRICE 02/03/2018 - 15/03/2018                   | 588.075          | 574.364                | 596.947         | 601.458          | 617.866   |
| AVERAGE UNIT OVER/(UNDER) RECOVERY 02/03/2018 - 15/03/2018         | 8.895            | 10.606                 | 15.784          | 15.772           | 14.162    |

### ANALYSIS MOVEMENT OF AVERAGE OVER/(UNDER) RECOVERY

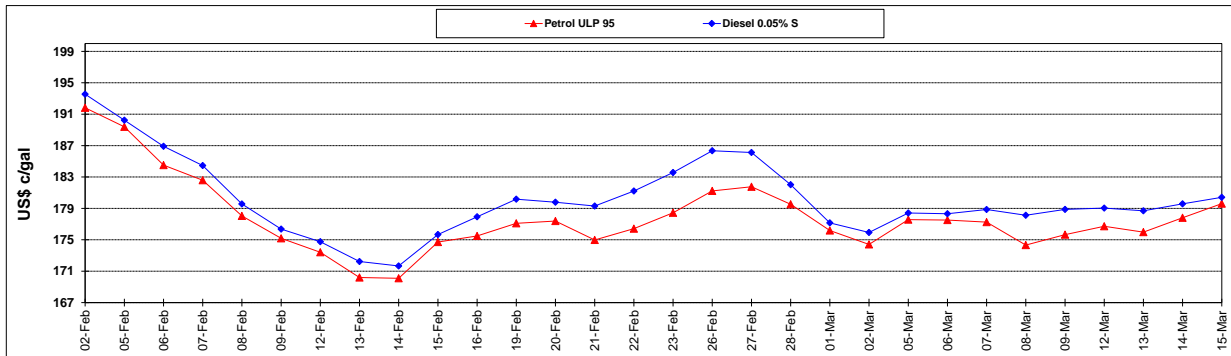
|  | PETROL 95 | PETROL 93 | DIESEL 0.05% | DIESEL 0.005% | ILL. PAR. |
|--|-----------|-----------|--------------|---------------|-----------|
| - MOVEMENT IN INTERNATIONAL PRODUCT PRICES                 | 10.483    | 12.157    | 17.395       | 17.396        | 15.831    |
| - MOVEMENT IN EXCHANGE RATE                                | (1.588)   | (1.551)   | (1.612)      | (1.624)       | (1.669)   |
| AVERAGE UNIT OVER/(UNDER) RECOVERY 02/03/2018 - 15/03/2018 | 8.895     | 10.606    | 15.784       | 15.772        | 14.162    |

### R/\$ EXCHANGE RATE - (R/\$11.7903 - 15/03/2018)

#### EXCHANGE RATE USED IN BASIC FUEL PRICE



#### INTERNATIONAL PRODUCT PRICES OF BASKET USED IN BASIC FUEL PRICE



#### BASIC FUEL PRICE IN SA CENTS PER LITRE

