

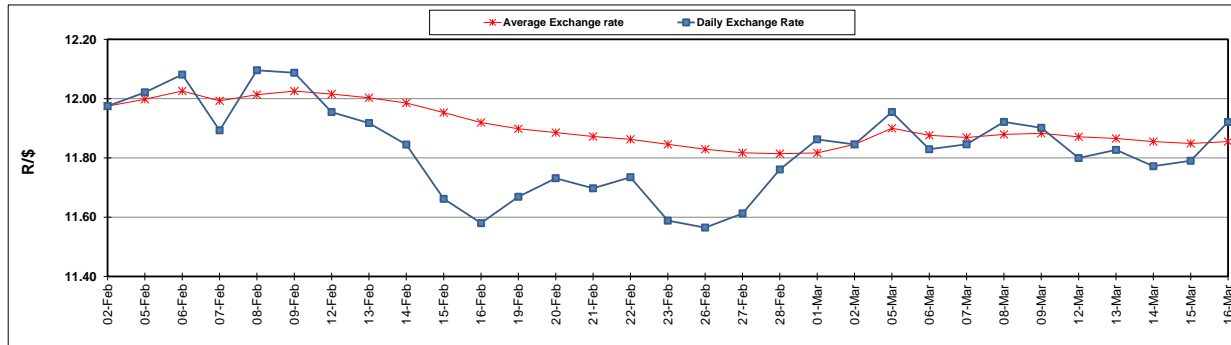
	PETROL 95 ULP	PETROL 93 ULP & LRP	DIESEL 0.05%	DIESEL 0.005%	ILL. PAR.
GAUTENG PUMP PRICE (SA c/l) AS FROM 07/03/2018	1 376.000	1 354.000	-	-	-
WHOLESALE PRICE (SA c/l) AS FROM 07/03/2018	-	-	1 209.630	1 215.030	795.388
SINGLE NATIONAL MAXIMUM RETAIL PRICE	-	-	-	-	1 026.000
BASIC FUEL PRICE - 16/03/2018 (SA c/l)	605.396	591.319	609.453	614.824	613.831
PRESS RELEASE CONTRIBUTION TO BFP 07/03/2018 - 16/03/2018 (SA c/l)	586.170	574.170	598.630	604.030	625.128
UNIT OVER/(UNDER) RECOVERY - 16/03/2018 (SA c/l)	(19.226)	(17.149)	(10.823)	(10.794)	11.297
AVERAGE BASIC FUEL PRICE 02/03/2018 - 16/03/2018	589.649	575.905	598.083	602.673	617.499
AVERAGE UNIT OVER/(UNDER) RECOVERY 02/03/2018 - 16/03/2018	6.339	8.083	13.365	13.357	13.902

ANALYSIS MOVEMENT OF AVERAGE OVER/(UNDER) RECOVERY

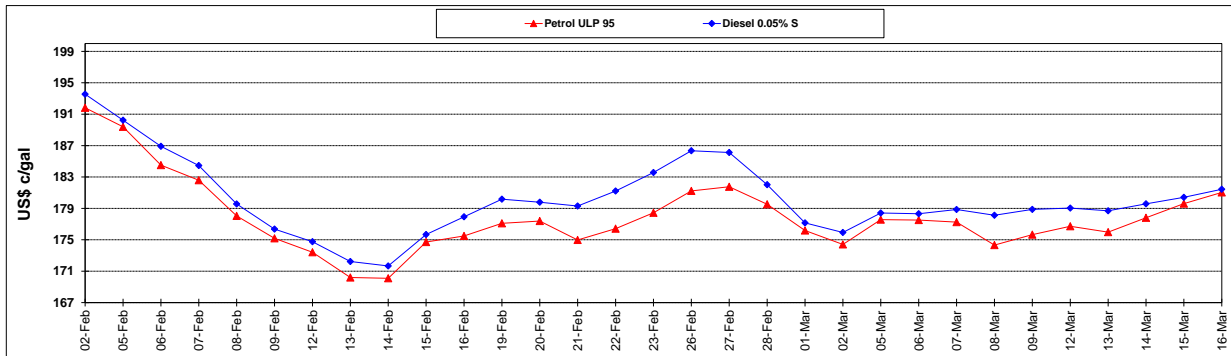
	PETROL 95	PETROL 93	DIESEL 0.05%	DIESEL 0.005%	ILL. PAR.
- MOVEMENT IN INTERNATIONAL PRODUCT PRICES	8.254	9.953	15.307	15.314	15.907
- MOVEMENT IN EXCHANGE RATE	(1.915)	(1.870)	(1.942)	(1.957)	(2.005)
AVERAGE UNIT OVER/(UNDER) RECOVERY 02/03/2018 - 16/03/2018	6.339	8.083	13.365	13.357	13.902

R/\$ EXCHANGE RATE - (R/\$11.9210 - 16/03/2018)

EXCHANGE RATE USED IN BASIC FUEL PRICE



INTERNATIONAL PRODUCT PRICES OF BASKET USED IN BASIC FUEL PRICE



BASIC FUEL PRICE IN SA CENTS PER LITRE

