

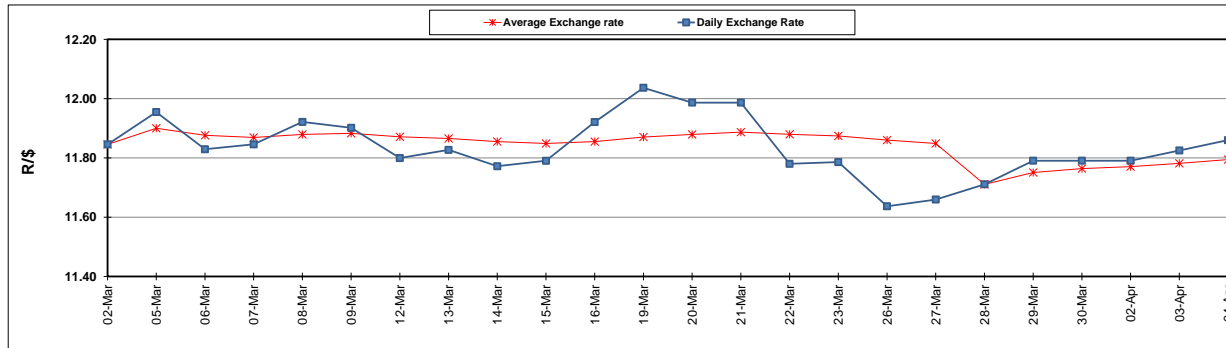
	PETROL 95 ULP	PETROL 93 ULP & LRP	DIESEL 0.05%	DIESEL 0.005%	ILL. PAR.
GAUTENG PUMP PRICE (SA c/l) AS FROM 07/03/2018	1 448.000	1 423.000	-	-	-
WHOLESALE PRICE (SA c/l) AS FROM 07/03/2018	-	-	1 274.830	1 280.230	793.088
SINGLE NATIONAL MAXIMUM RETAIL PRICE	-	-	-	-	1 026.000
BASIC FUEL PRICE - 04/04/2018 (SA c/l)	616.448	602.900	634.877	639.944	646.749
PRESS RELEASE CONTRIBUTION TO BFP 04/04/2018 - 04/04/2018 (SA c/l)	596.070	581.070	601.630	607.030	620.128
UNIT OVER/(UNDER) RECOVERY - 04/04/2018 (SA c/l)	(20.378)	(21.830)	(33.247)	(32.914)	(26.621)
AVERAGE BASIC FUEL PRICE 28/03/2018 - 04/04/2018	623.059	609.050	636.332	641.582	644.832
AVERAGE UNIT OVER/(UNDER) RECOVERY 28/03/2018 - 04/04/2018	(35.239)	(33.730)	(37.202)	(37.052)	(20.537)

### ANALYSIS MOVEMENT OF AVERAGE OVER/(UNDER) RECOVERY

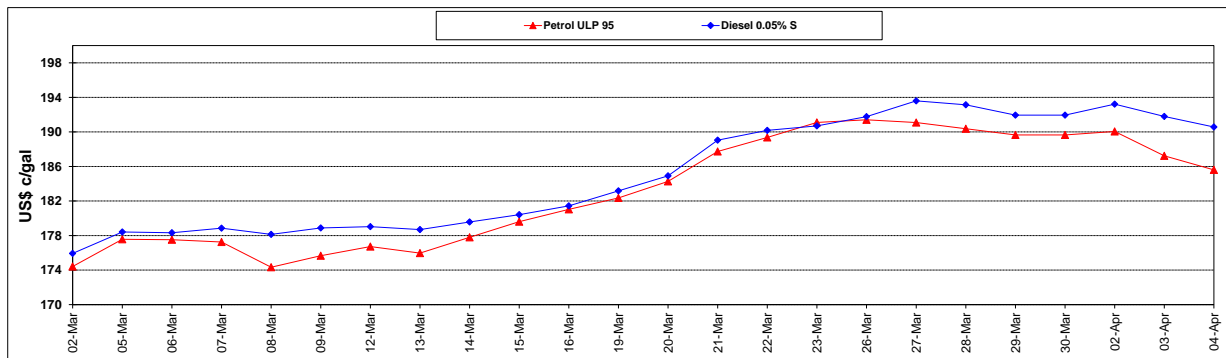
	PETROL 95	PETROL 93	DIESEL 0.05%	DIESEL 0.005%	ILL. PAR.
- MOVEMENT IN INTERNATIONAL PRODUCT PRICES	(38.107)	(36.534)	(40.132)	(40.006)	(23.506)
- MOVEMENT IN EXCHANGE RATE	2.868	2.804	2.930	2.954	2.969
AVERAGE UNIT OVER/(UNDER) RECOVERY 28/03/2018 - 04/04/2018	(35.239)	(33.730)	(37.202)	(37.052)	(20.537)

### R/\$ EXCHANGE RATE - (R/\$11.8600 - 04/04/2018)

#### EXCHANGE RATE USED IN BASIC FUEL PRICE



#### INTERNATIONAL PRODUCT PRICES OF BASKET USED IN BASIC FUEL PRICE



#### BASIC FUEL PRICE IN SA CENTS PER LITRE

