

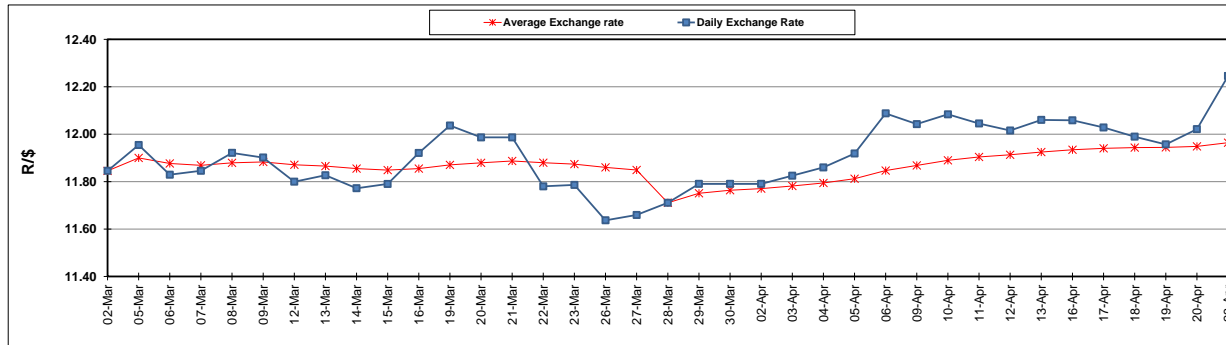
	PETROL 95 ULP	PETROL 93 ULP & LRP	DIESEL 0.05%	DIESEL 0.005%	ILL. PAR.
GAUTENG PUMP PRICE (SA c/l) AS FROM 07/03/2018	1 448.000	1 423.000	-	-	-
WHOLESALE PRICE (SA c/l) AS FROM 07/03/2018	-	-	1 274.830	1 280.230	793.088
SINGLE NATIONAL MAXIMUM RETAIL PRICE	-	-	-	-	1 026.000
BASIC FUEL PRICE - 23/04/2018 (SA c/l)	677.068	661.794	696.576	701.104	714.697
PRESS RELEASE CONTRIBUTION TO BFP 04/04/2018 - 23/04/2018 (SA c/l)	596.070	581.070	601.630	607.030	620.128
UNIT OVER/(UNDER) RECOVERY - 23/04/2018 (SA c/l)	(80.998)	(80.724)	(94.946)	(94.074)	(94.569)
AVERAGE BASIC FUEL PRICE 28/03/2018 - 23/04/2018	641.034	625.608	657.690	662.697	671.284
AVERAGE UNIT OVER/(UNDER) RECOVERY 28/03/2018 - 23/04/2018	(47.569)	(46.354)	(56.849)	(56.457)	(49.840)

### ANALYSIS MOVEMENT OF AVERAGE OVER/(UNDER) RECOVERY

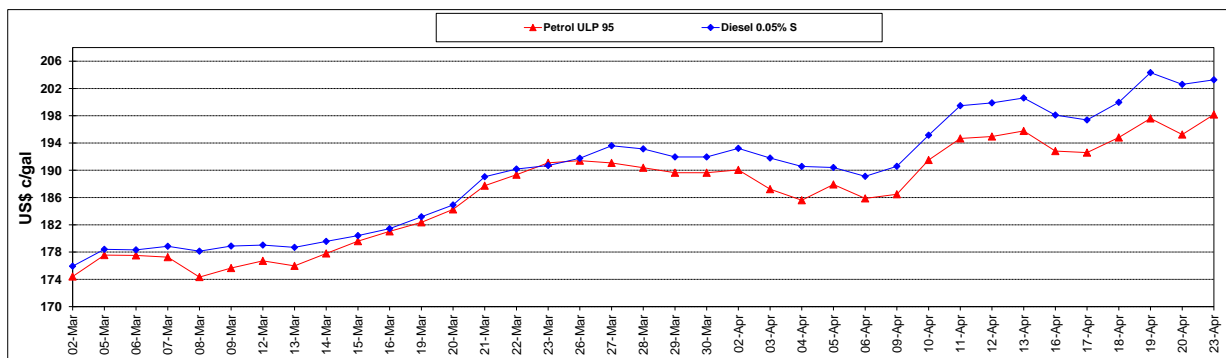
	PETROL 95	PETROL 93	DIESEL 0.05%	DIESEL 0.005%	ILL. PAR.
- MOVEMENT IN INTERNATIONAL PRODUCT PRICES	(41.391)	(40.325)	(50.511)	(50.070)	(43.371)
- MOVEMENT IN EXCHANGE RATE	(6.178)	(6.029)	(6.338)	(6.386)	(6.469)
AVERAGE UNIT OVER/(UNDER) RECOVERY 28/03/2018 - 23/04/2018	(47.569)	(46.354)	(56.849)	(56.457)	(49.840)

### R/\$ EXCHANGE RATE - (R/\$12.2453 - 23/04/2018)

#### EXCHANGE RATE USED IN BASIC FUEL PRICE



#### INTERNATIONAL PRODUCT PRICES OF BASKET USED IN BASIC FUEL PRICE



#### BASIC FUEL PRICE IN SA CENTS PER LITRE

