

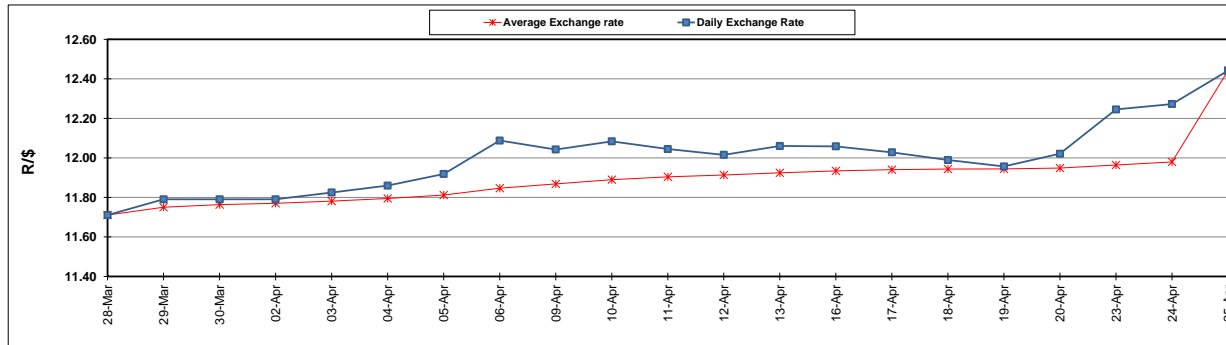
	PETROL 95 ULP	PETROL 93 ULP & LRP	DIESEL 0.05%	DIESEL 0.005%	ILL. PAR.
GAUTENG PUMP PRICE (SA c/l) AS FROM 02/05/2018	1 497.000	1 472.000	-	-	-
WHOLESALE PRICE (SA c/l) AS FROM 02/05/2018	-	-	1 333.830	1 338.230	845.088
SINGLE NATIONAL MAXIMUM RETAIL PRICE	-	-	-	-	1 089.000
BASIC FUEL PRICE - 25/04/2018 (SA c/l)	687.761	672.971	708.802	713.577	726.549
PRESS RELEASE CONTRIBUTION TO BFP 25/04/2018 - 25/04/2018 (SA c/l)	596.070	581.070	601.630	607.030	620.128
UNIT OVER/(UNDER) RECOVERY - 25/04/2018 (SA c/l)	(91.691)	(91.901)	(107.172)	(106.547)	(106.421)
AVERAGE BASIC FUEL PRICE 25/04/2018 - 25/04/2018	687.761	672.971	708.802	713.577	726.549
AVERAGE UNIT OVER/(UNDER) RECOVERY 25/04/2018 - 25/04/2018	(91.691)	(91.901)	(107.172)	(106.547)	(106.421)

### ANALYSIS MOVEMENT OF AVERAGE OVER/(UNDER) RECOVERY

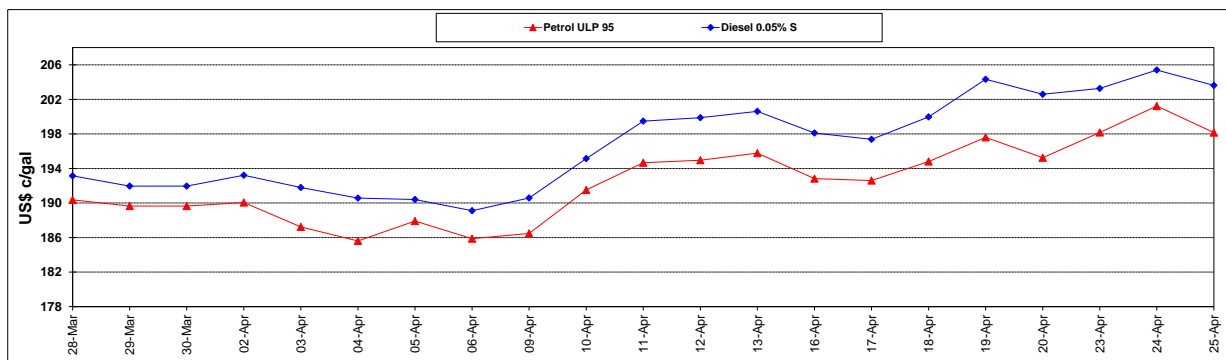
	PETROL 95	PETROL 93	DIESEL 0.05%	DIESEL 0.005%	ILL. PAR.
- MOVEMENT IN INTERNATIONAL PRODUCT PRICES	(66.147)	(66.906)	(80.846)	(80.044)	(79.436)
- MOVEMENT IN EXCHANGE RATE	(25.544)	(24.995)	(26.326)	(26.503)	(26.985)
AVERAGE UNIT OVER/(UNDER) RECOVERY 25/04/2018 - 25/04/2018	(91.691)	(91.901)	(107.172)	(106.547)	(106.421)

### R/\$ EXCHANGE RATE - (R/\$12.4418 - 25/04/2018)

#### EXCHANGE RATE USED IN BASIC FUEL PRICE



#### INTERNATIONAL PRODUCT PRICES OF BASKET USED IN BASIC FUEL PRICE



#### BASIC FUEL PRICE IN SA CENTS PER LITRE

