

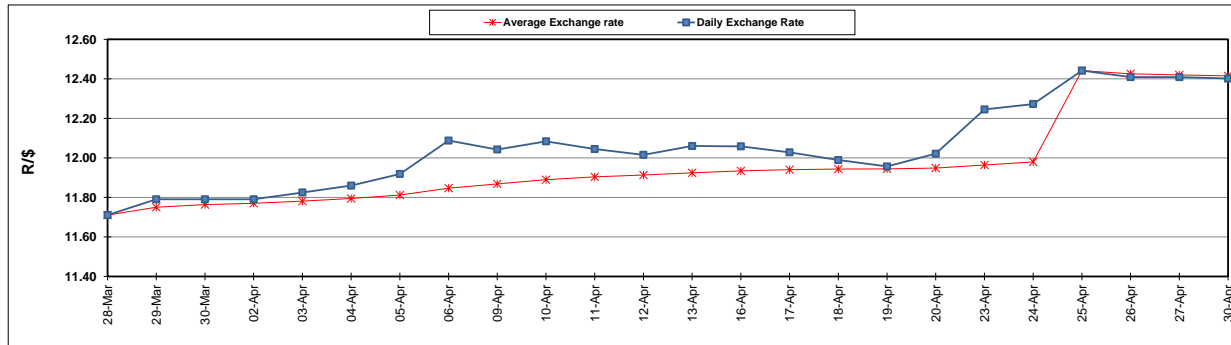
	PETROL 95 ULP	PETROL 93 ULP & LRP	DIESEL 0.05%	DIESEL 0.005%	ILL. PAR.
GAUTENG PUMP PRICE (SA c/l) AS FROM 02/05/2018	1 497.000	1 472.000	-	-	-
WHOLESALE PRICE (SA c/l) AS FROM 02/05/2018	-	-	1 333.830	1 338.230	845.088
SINGLE NATIONAL MAXIMUM RETAIL PRICE	-	-	-	-	1 089.000
BASIC FUEL PRICE - 30/04/2018 (SA c/l)	694.495	679.238	710.559	715.756	726.293
PRESS RELEASE CONTRIBUTION TO BFP 25/04/2018 - 30/04/2018 (SA c/l)	596.070	581.070	601.630	607.030	620.128
UNIT OVER/(UNDER) RECOVERY - 30/04/2018 (SA c/l)	(98.425)	(98.168)	(108.929)	(108.726)	(106.165)
AVERAGE BASIC FUEL PRICE 25/04/2018 - 30/04/2018	691.276	676.260	711.669	716.602	727.782
AVERAGE UNIT OVER/(UNDER) RECOVERY 25/04/2018 - 30/04/2018	(95.206)	(95.190)	(110.039)	(109.572)	(107.654)

### ANALYSIS MOVEMENT OF AVERAGE OVER/(UNDER) RECOVERY

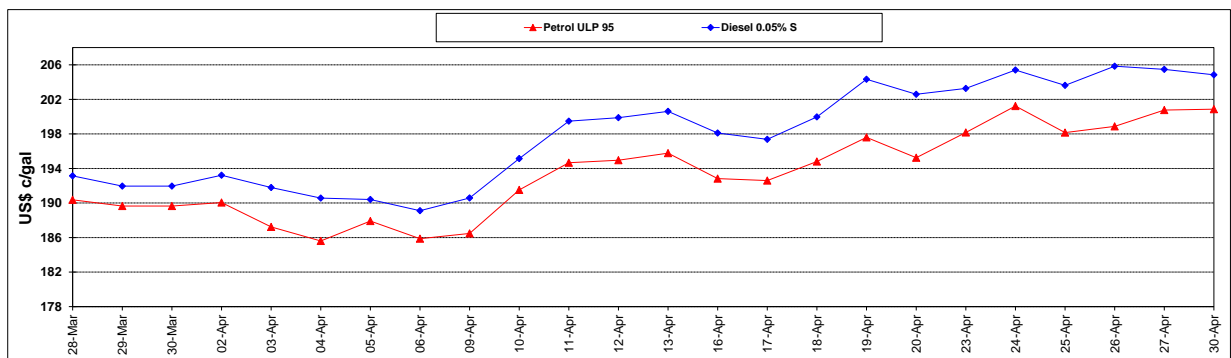
	PETROL 95	PETROL 93	DIESEL 0.05%	DIESEL 0.005%	ILL. PAR.
- MOVEMENT IN INTERNATIONAL PRODUCT PRICES	(70.952)	(71.463)	(85.070)	(84.429)	(82.119)
- MOVEMENT IN EXCHANGE RATE	(24.254)	(23.727)	(24.969)	(25.143)	(25.535)
AVERAGE UNIT OVER/(UNDER) RECOVERY 25/04/2018 - 30/04/2018	(95.206)	(95.190)	(110.039)	(109.572)	(107.654)

### R/\$ EXCHANGE RATE - (R/\$12.4018 - 30/04/2018)

#### EXCHANGE RATE USED IN BASIC FUEL PRICE



#### INTERNATIONAL PRODUCT PRICES OF BASKET USED IN BASIC FUEL PRICE



#### BASIC FUEL PRICE IN SA CENTS PER LITRE

