

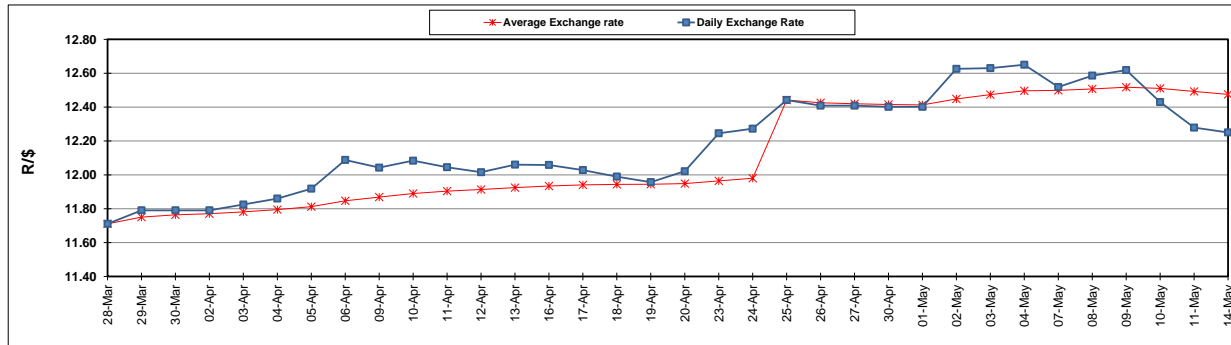
	PETROL 95 ULP	PETROL 93 ULP & LRP	DIESEL 0.05%	DIESEL 0.005%	ILL. PAR.
GAUTENG PUMP PRICE (SA c/l) AS FROM 02/05/2018	1 497.000	1 472.000	-	-	-
WHOLESALE PRICE (SA c/l) AS FROM 02/05/2018	-	-	1 333.830	1 338.230	845.088
SINGLE NATIONAL MAXIMUM RETAIL PRICE	-	-	-	-	1 089.000
BASIC FUEL PRICE - 14/05/2018 (SA c/l)	706.274	694.866	725.124	730.742	733.385
PRESS RELEASE CONTRIBUTION TO BFP 02/05/2018 - 14/05/2018 (SA c/l)	645.070	630.070	660.630	665.030	672.128
UNIT OVER/(UNDER) RECOVERY - 14/05/2018 (SA c/l)	(61.204)	(64.796)	(64.494)	(65.712)	(61.257)
AVERAGE BASIC FUEL PRICE 25/04/2018 - 14/05/2018	699.201	686.229	718.966	724.741	730.978
AVERAGE UNIT OVER/(UNDER) RECOVERY 25/04/2018 - 14/05/2018	(71.631)	(73.659)	(79.407)	(80.425)	(77.422)

### ANALYSIS MOVEMENT OF AVERAGE OVER/(UNDER) RECOVERY

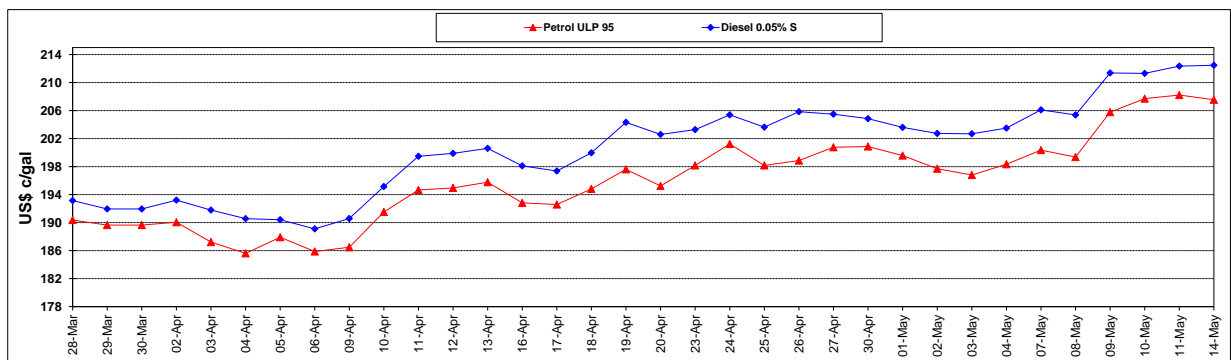
	PETROL 95	PETROL 93	DIESEL 0.05%	DIESEL 0.005%	ILL. PAR.
- MOVEMENT IN INTERNATIONAL PRODUCT PRICES	(43.870)	(46.413)	(50.862)	(51.650)	(48.399)
- MOVEMENT IN EXCHANGE RATE	(27.761)	(27.246)	(28.545)	(28.775)	(29.022)
AVERAGE UNIT OVER/(UNDER) RECOVERY 25/04/2018 - 14/05/2018	(71.631)	(73.659)	(79.407)	(80.425)	(77.422)

### R/\$ EXCHANGE RATE - (R/\$12.2505 - 14/05/2018)

#### EXCHANGE RATE USED IN BASIC FUEL PRICE



#### INTERNATIONAL PRODUCT PRICES OF BASKET USED IN BASIC FUEL PRICE



#### BASIC FUEL PRICE IN SA CENTS PER LITRE

