

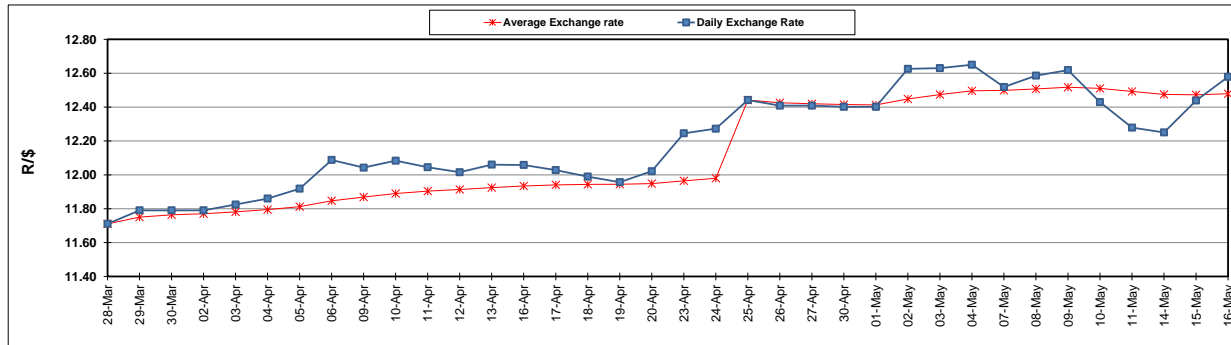
	PETROL 95 ULP	PETROL 93 ULP & LRP	DIESEL 0.05%	DIESEL 0.005%	ILL. PAR.
GAUTENG PUMP PRICE (SA c/l) AS FROM 02/05/2018	1 497.000	1 472.000	-	-	-
WHOLESALE PRICE (SA c/l) AS FROM 02/05/2018	-	-	1 333.830	1 338.230	845.088
SINGLE NATIONAL MAXIMUM RETAIL PRICE	-	-	-	-	1 089.000
BASIC FUEL PRICE - 16/05/2018 (SA c/l)	738.763	726.517	751.054	756.531	757.479
PRESS RELEASE CONTRIBUTION TO BFP 02/05/2018 - 16/05/2018 (SA c/l)	645.070	630.070	660.630	665.030	672.128
UNIT OVER/(UNDER) RECOVERY - 16/05/2018 (SA c/l)	(93.693)	(96.447)	(90.424)	(91.501)	(85.351)
AVERAGE BASIC FUEL PRICE 25/04/2018 - 16/05/2018	703.345	690.472	722.732	728.465	734.057
AVERAGE UNIT OVER/(UNDER) RECOVERY 25/04/2018 - 16/05/2018	(73.588)	(75.715)	(80.540)	(81.560)	(78.179)

ANALYSIS MOVEMENT OF AVERAGE OVER/(UNDER) RECOVERY

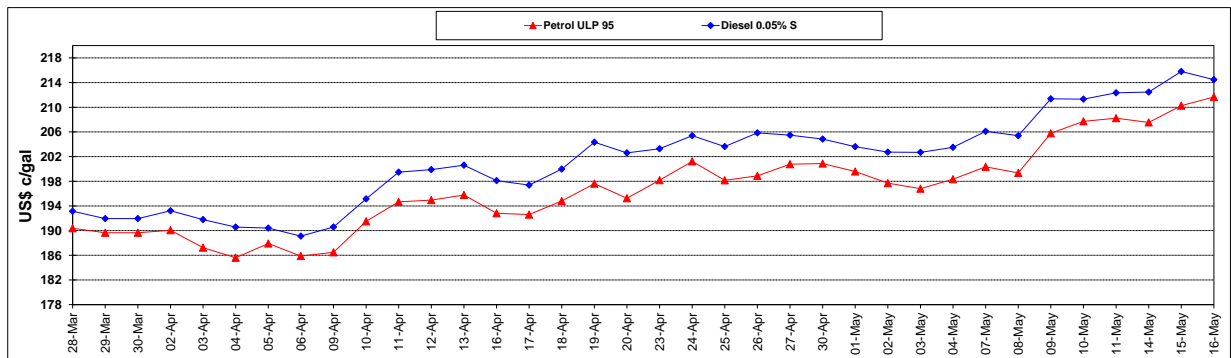
	PETROL 95	PETROL 93	DIESEL 0.05%	DIESEL 0.005%	ILL. PAR.
- MOVEMENT IN INTERNATIONAL PRODUCT PRICES	(45.434)	(48.077)	(51.610)	(52.402)	(48.797)
- MOVEMENT IN EXCHANGE RATE	(28.153)	(27.637)	(28.929)	(29.158)	(29.382)
AVERAGE UNIT OVER/(UNDER) RECOVERY 25/04/2018 - 16/05/2018	(73.588)	(75.715)	(80.540)	(81.560)	(78.179)

R/\$ EXCHANGE RATE - (R/\$12.5788 - 16/05/2018)

EXCHANGE RATE USED IN BASIC FUEL PRICE



INTERNATIONAL PRODUCT PRICES OF BASKET USED IN BASIC FUEL PRICE



BASIC FUEL PRICE IN SA CENTS PER LITRE

