

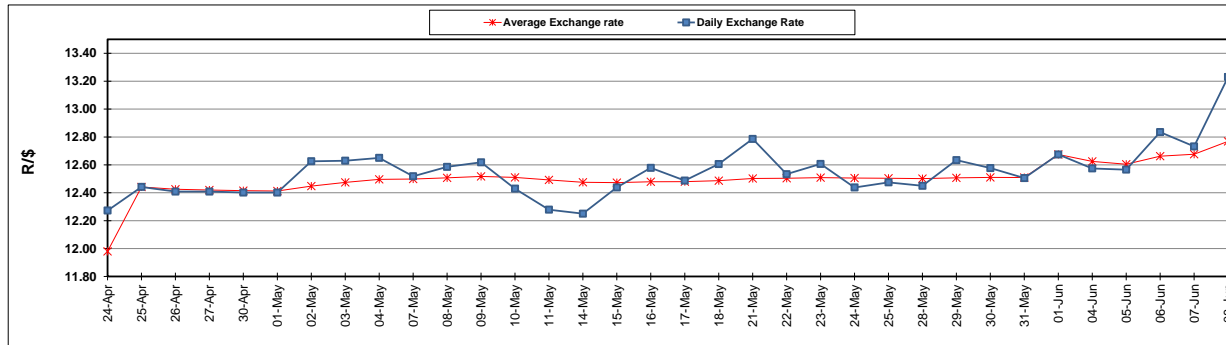
	PETROL 95 ULP	PETROL 93 ULP & LRP	DIESEL 0.05%	DIESEL 0.005%	ILL. PAR.
GAUTENG PUMP PRICE (SA c/l) AS FROM 06/06/2018	1 579.000	1 554.000	-	-	-
WHOLESALE PRICE (SA c/l) AS FROM 06/06/2018	-	-	1 418.830	1 425.230	927.088
SINGLE NATIONAL MAXIMUM RETAIL PRICE	-	-	-	-	1 198.000
BASIC FUEL PRICE - 08/06/2018 (SA c/l)	752.185	740.695	769.961	773.703	773.444
PRESS RELEASE CONTRIBUTION TO BFP 06/06/2018 - 08/06/2018 (SA c/l)	727.070	712.070	745.630	752.030	754.128
UNIT OVER/(UNDER) RECOVERY - 08/06/2018 (SA c/l)	(25.115)	(28.625)	(24.331)	(21.673)	(19.316)
AVERAGE BASIC FUEL PRICE 01/06/2018 - 08/06/2018	723.941	711.481	739.689	743.981	741.686
AVERAGE UNIT OVER/(UNDER) RECOVERY 01/06/2018 - 08/06/2018	(37.871)	(40.411)	(36.559)	(35.451)	(28.558)

ANALYSIS MOVEMENT OF AVERAGE OVER/(UNDER) RECOVERY

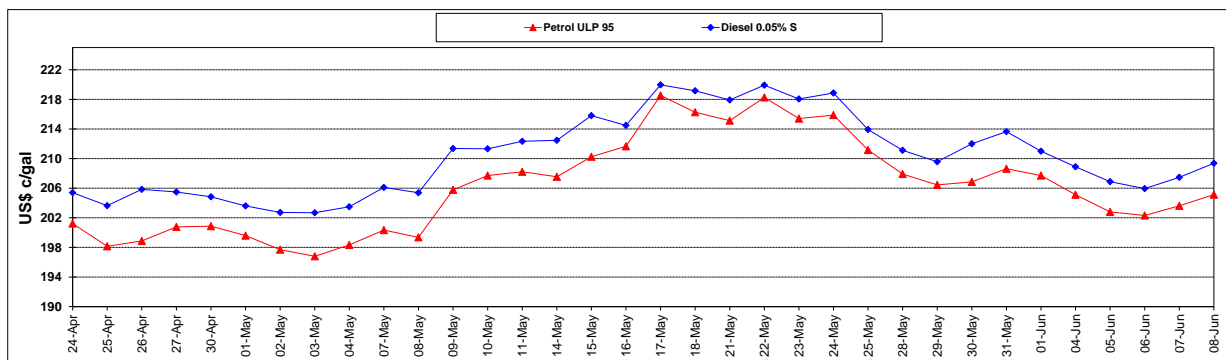
	PETROL 95	PETROL 93	DIESEL 0.05%	DIESEL 0.005%	ILL. PAR.
- MOVEMENT IN INTERNATIONAL PRODUCT PRICES	(23.198)	(25.990)	(21.567)	(20.372)	(13.525)
- MOVEMENT IN EXCHANGE RATE	(14.673)	(14.421)	(14.992)	(15.079)	(15.033)
AVERAGE UNIT OVER/(UNDER) RECOVERY 01/06/2018 - 08/06/2018	(37.871)	(40.411)	(36.559)	(35.451)	(28.558)

R/\$ EXCHANGE RATE - (R/\$13.2295 - 08/06/2018)

EXCHANGE RATE USED IN BASIC FUEL PRICE



INTERNATIONAL PRODUCT PRICES OF BASKET USED IN BASIC FUEL PRICE



BASIC FUEL PRICE IN SA CENTS PER LITRE

