

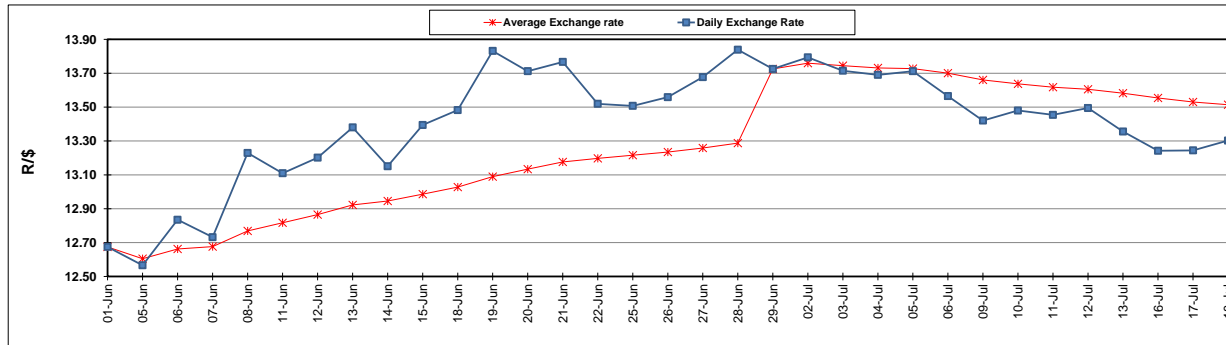
	PETROL 95 ULP	PETROL 93 ULP & LRP	DIESEL 0.05%	DIESEL 0.005%	ILL. PAR.
GAUTENG PUMP PRICE (SA c/l) AS FROM 04/07/2018	1 602.000	1 581.000	-	-	-
WHOLESALE PRICE (SA c/l) AS FROM 04/07/2018	-	-	1 444.830	1 449.230	949.088
SINGLE NATIONAL MAXIMUM RETAIL PRICE	-	-	-	-	1 228.000
BASIC FUEL PRICE - 18/07/2018 (SA c/l)	707.373	694.758	723.886	729.219	737.174
PRESS RELEASE CONTRIBUTION TO BFP 04/07/2018 - 18/07/2018 (SA c/l)	750.070	739.070	771.630	776.030	776.128
UNIT OVER/(UNDER) RECOVERY - 18/07/2018 (SA c/l)	42.697	44.312	47.744	46.811	38.954
AVERAGE BASIC FUEL PRICE 29/06/2018 - 18/07/2018	750.277	739.939	766.939	772.055	781.200
AVERAGE UNIT OVER/(UNDER) RECOVERY 29/06/2018 - 18/07/2018	(5.136)	(6.655)	(0.880)	(1.168)	(9.787)

ANALYSIS MOVEMENT OF AVERAGE OVER/(UNDER) RECOVERY

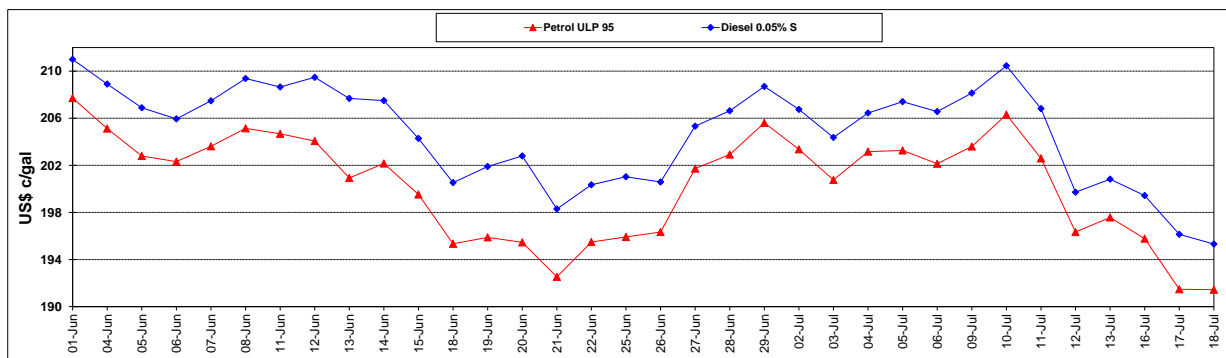
	PETROL 95	PETROL 93	DIESEL 0.05%	DIESEL 0.005%	ILL. PAR.
- MOVEMENT IN INTERNATIONAL PRODUCT PRICES	7.456	5.763	11.991	11.789	3.325
- MOVEMENT IN EXCHANGE RATE	(12.592)	(12.418)	(12.871)	(12.957)	(13.111)
AVERAGE UNIT OVER/(UNDER) RECOVERY 29/06/2018 - 18/07/2018	(5.136)	(6.655)	(0.880)	(1.168)	(9.787)

R/\$ EXCHANGE RATE - (R/\$13.3025 - 18/07/2018)

EXCHANGE RATE USED IN ULP FUEL PRICE



INTERNATIONAL PRODUCT PRICES OF BASKET USED IN BASIC FUEL PRICE



BASIC FUEL PRICE IN SA CENTS PER LITRE

