

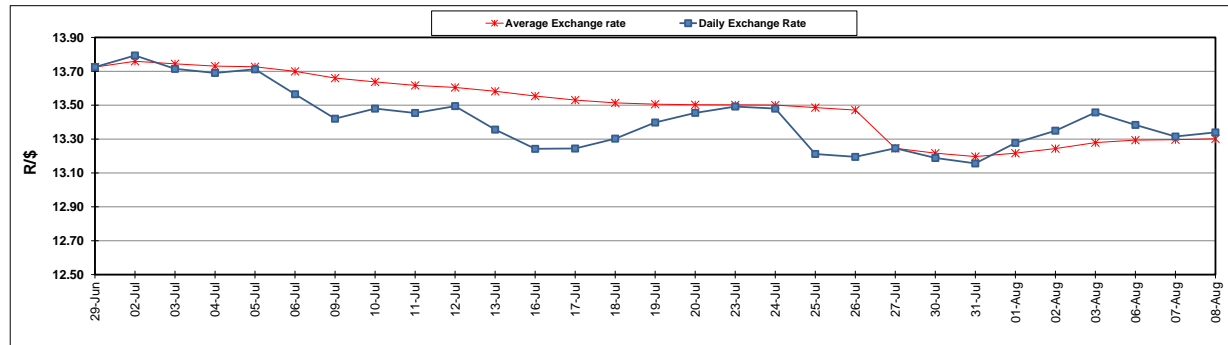
	PETROL 95 ULP	PETROL 93 ULP & LRP	DIESEL 0.05%	DIESEL 0.005%	ILL. PAR.
GAUTENG PUMP PRICE (SA c/l) AS FROM 04/08/2018	1 603.000	1 582.000	-	-	-
WHOLESALE PRICE (SA c/l) AS FROM 04/08/2018	-	-	1 440.830	1 445.230	953.088
SINGLE NATIONAL MAXIMUM RETAIL PRICE	-	-	-	-	1 233.000
BASIC FUEL PRICE - 08/08/2018 (SA c/l)	743.709	728.632	761.054	765.393	764.418
PRESS RELEASE CONTRIBUTION TO BFP 01/08/2018 - 08/08/2018 (SA c/l)	751.070	739.070	767.630	772.030	780.128
UNIT OVER/(UNDER) RECOVERY - 08/08/2018 (SA c/l)	7.361	10.438	6.576	6.637	15.710
AVERAGE BASIC FUEL PRICE 27/07/2018 - 08/08/2018	744.229	731.607	756.242	760.373	764.166
AVERAGE UNIT OVER/(UNDER) RECOVERY 27/06/2018 - 08/08/2018	6.508	7.130	12.722	12.990	14.629

ANALYSIS MOVEMENT OF AVERAGE OVER/(UNDER) RECOVERY

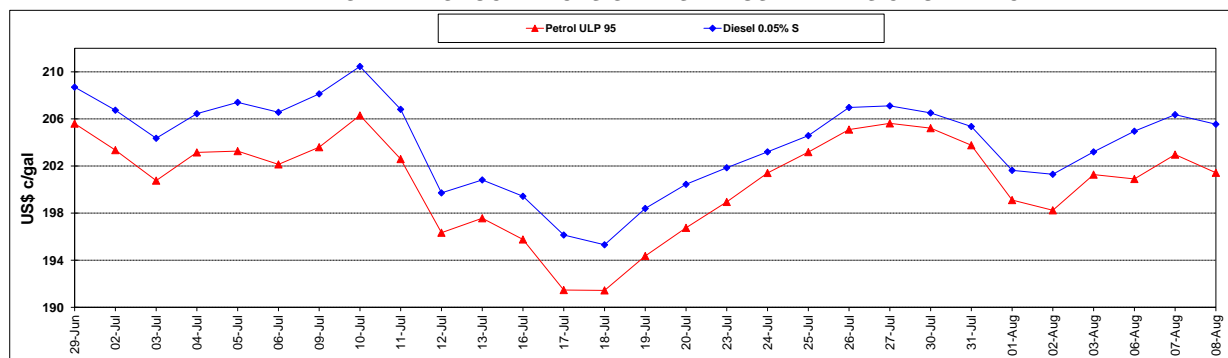
	PETROL 95	PETROL 93	DIESEL 0.05%	DIESEL 0.005%	ILL. PAR.
- MOVEMENT IN INTERNATIONAL PRODUCT PRICES	(2.992)	(2.209)	3.067	3.283	4.874
- MOVEMENT IN EXCHANGE RATE	9.500	9.339	9.654	9.707	9.755
AVERAGE UNIT OVER/(UNDER) RECOVERY 27/07/2018 - 08/08/2018	6.508	7.130	12.722	12.990	14.629

R/\$ EXCHANGE RATE - (R/\$13.3395 - 08/08/2018)

EXCHANGE RATE USED IN BASIC FUEL PRICE



INTERNATIONAL PRODUCT PRICES OF BASKET USED IN BASIC FUEL PRICE



BASIC FUEL PRICE IN SA CENTS PER LITRE

