

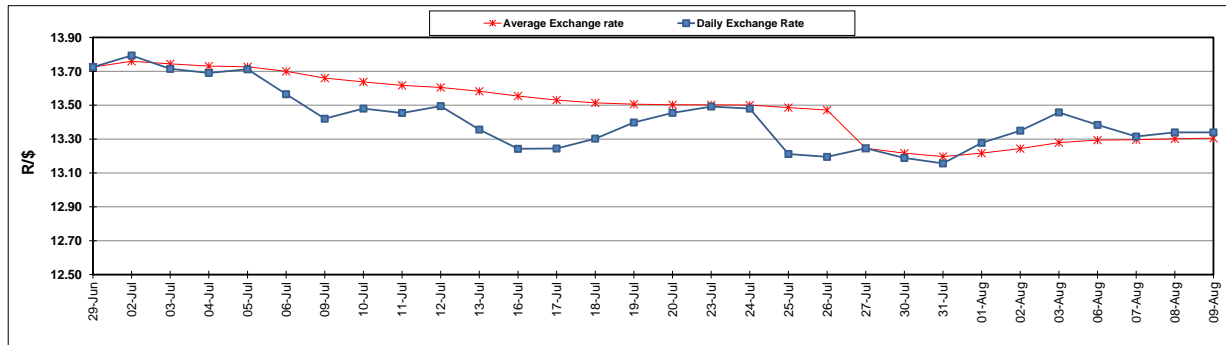
	PETROL 95 ULP	PETROL 93 ULP & LRP	DIESEL 0.05%	DIESEL 0.005%	ILL. PAR.
GAUTENG PUMP PRICE (SA c/l) AS FROM 04/08/2018	1 603.000	1 582.000	-	-	-
WHOLESALE PRICE (SA c/l) AS FROM 04/08/2018	-	-	1 440.830	1 445.230	953.088
SINGLE NATIONAL MAXIMUM RETAIL PRICE	-	-	-	-	1 233.000
BASIC FUEL PRICE - 09/08/2018 (SA c/l)	740.043	724.981	760.919	765.245	763.623
PRESS RELEASE CONTRIBUTION TO BFP 01/08/2018 - 09/08/2018 (SA c/l)	751.070	739.070	767.630	772.030	780.128
UNIT OVER/(UNDER) RECOVERY - 09/08/2018 (SA c/l)	11.027	14.089	6.711	6.785	16.505
AVERAGE BASIC FUEL PRICE 27/07/2018 - 09/08/2018	743.810	730.945	756.710	760.860	764.111
AVERAGE UNIT OVER/(UNDER) RECOVERY 27/06/2018 - 09/08/2018	6.960	7.826	12.121	12.370	14.817

### ANALYSIS MOVEMENT OF AVERAGE OVER/(UNDER) RECOVERY

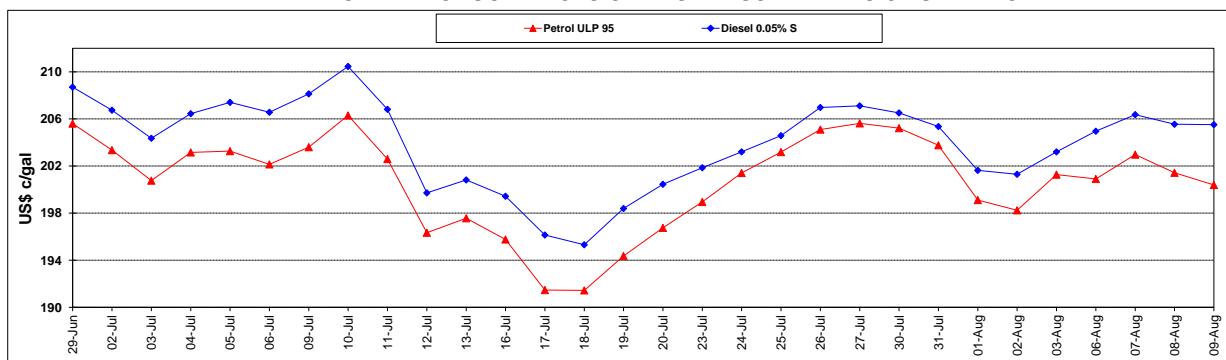
	PETROL 95	PETROL 93	DIESEL 0.05%	DIESEL 0.005%	ILL. PAR.
- MOVEMENT IN INTERNATIONAL PRODUCT PRICES	(2.320)	(1.294)	2.679	2.877	5.284
- MOVEMENT IN EXCHANGE RATE	9.280	9.119	9.441	9.493	9.533
AVERAGE UNIT OVER/(UNDER) RECOVERY 27/07/2018 - 09/08/2018	6.960	7.826	12.121	12.370	14.817

### R/\$ EXCHANGE RATE - (R/\$13.3395 - 09/08/2018)

#### EXCHANGE RATE USED IN BASIC FUEL PRICE



#### INTERNATIONAL PRODUCT PRICES OF BASKET USED IN BASIC FUEL PRICE



#### BASIC FUEL PRICE IN SA CENTS PER LITRE

