

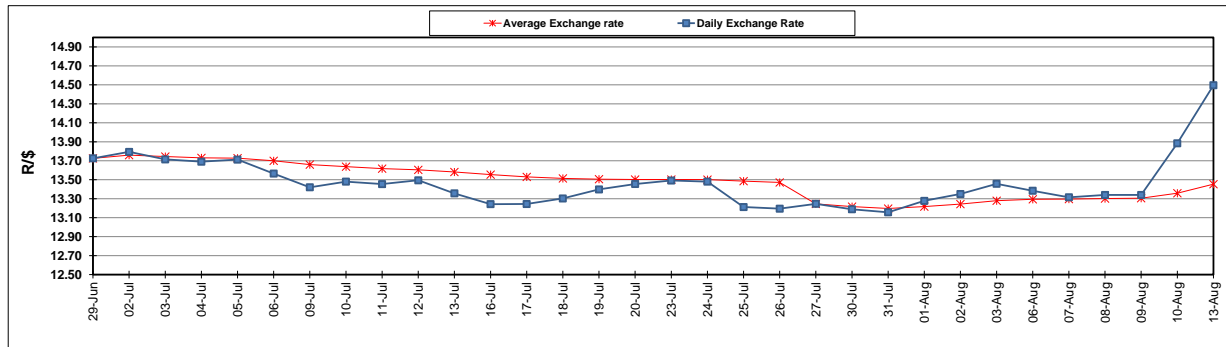
	PETROL 95 ULP	PETROL 93 ULP & LRP	DIESEL 0.05%	DIESEL 0.005%	ILL. PAR.
GAUTENG PUMP PRICE (SA c/l) AS FROM 04/08/2018	1 603.000	1 582.000	-	-	-
WHOLESALE PRICE (SA c/l) AS FROM 04/08/2018	-	-	1 440.830	1 445.230	953.088
SINGLE NATIONAL MAXIMUM RETAIL PRICE	-	-	-	-	1 233.000
BASIC FUEL PRICE - 13/08/2018 (SA c/l)	798.273	782.753	825.542	830.681	822.359
PRESS RELEASE CONTRIBUTION TO BFP 01/08/2018 - 13/08/2018 (SA c/l)	751.070	739.070	767.630	772.030	780.128
UNIT OVER/(UNDER) RECOVERY - 13/08/2018 (SA c/l)	(47.203)	(43.683)	(57.912)	(58.651)	(42.231)
AVERAGE BASIC FUEL PRICE 27/07/2018 - 13/08/2018	749.993	736.700	764.865	769.133	770.743
AVERAGE UNIT OVER/(UNDER) RECOVERY 27/06/2018 - 13/08/2018	0.827	2.120	3.765	3.897	8.385

ANALYSIS MOVEMENT OF AVERAGE OVER/(UNDER) RECOVERY

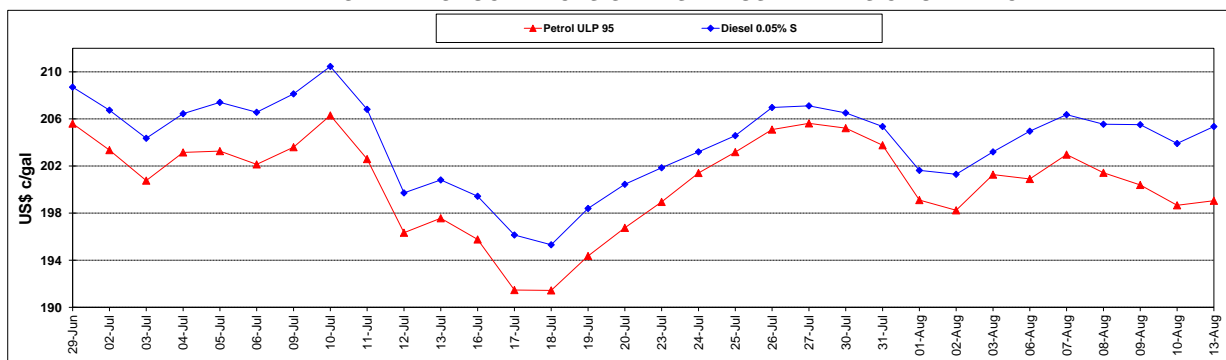
	PETROL 95	PETROL 93	DIESEL 0.05%	DIESEL 0.005%	ILL. PAR.
- MOVEMENT IN INTERNATIONAL PRODUCT PRICES	(0.204)	1.107	2.713	2.839	7.325
- MOVEMENT IN EXCHANGE RATE	1.031	1.013	1.052	1.058	1.060
AVERAGE UNIT OVER/(UNDER) RECOVERY 27/07/2018 - 13/08/2018	0.827	2.120	3.765	3.897	8.385

R/\$ EXCHANGE RATE - (R/\$14.4960 - 13/08/2018)

EXCHANGE RATE USED IN BASIC FUEL PRICE



INTERNATIONAL PRODUCT PRICES OF BASKET USED IN BASIC FUEL PRICE



BASIC FUEL PRICE IN SA CENTS PER LITRE

