

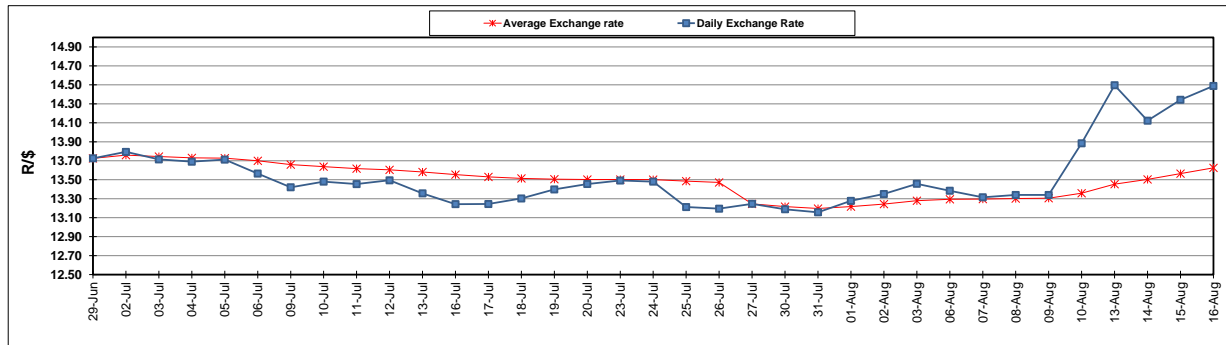
	PETROL 95 ULP	PETROL 93 ULP & LRP	DIESEL 0.05%	DIESEL 0.005%	ILL. PAR.
GAUTENG PUMP PRICE (SA c/l) AS FROM 04/08/2018	1 603.000	1 582.000	-	-	-
WHOLESALE PRICE (SA c/l) AS FROM 04/08/2018	-	-	1 440.830	1 445.230	953.088
SINGLE NATIONAL MAXIMUM RETAIL PRICE	-	-	-	-	1 233.000
BASIC FUEL PRICE - 16/08/2018 (SA c/l)	796.677	780.244	811.099	815.826	809.719
PRESS RELEASE CONTRIBUTION TO BFP 01/08/2018 - 16/08/2018 (SA c/l)	751.070	739.070	767.630	772.030	780.128
UNIT OVER/(UNDER) RECOVERY - 16/08/2018 (SA c/l)	(45.607)	(41.174)	(43.469)	(43.796)	(29.591)
AVERAGE BASIC FUEL PRICE 27/07/2018 - 16/08/2018	758.329	744.484	773.323	777.726	777.538
AVERAGE UNIT OVER/(UNDER) RECOVERY 27/06/2018 - 16/08/2018	(7.459)	(5.614)	(4.893)	(4.896)	1.790

ANALYSIS MOVEMENT OF AVERAGE OVER/(UNDER) RECOVERY

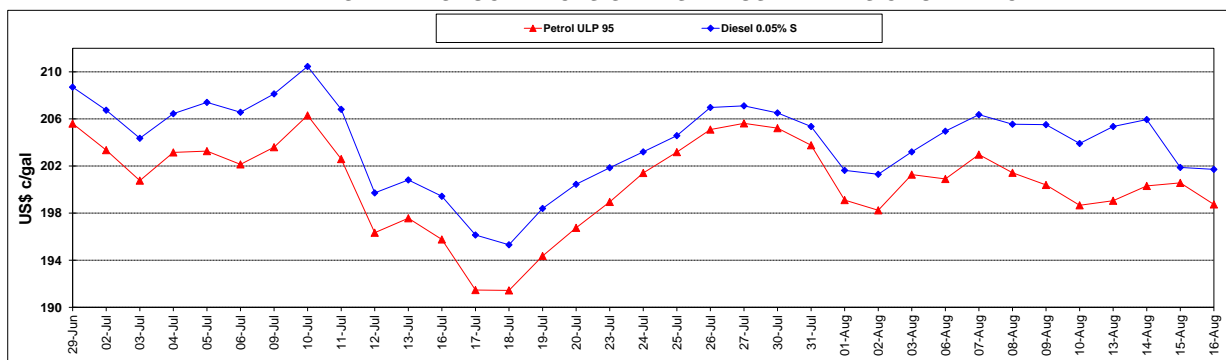
	PETROL 95	PETROL 93	DIESEL 0.05%	DIESEL 0.005%	ILL. PAR.
- MOVEMENT IN INTERNATIONAL PRODUCT PRICES	1.140	2.828	3.876	3.922	10.606
- MOVEMENT IN EXCHANGE RATE	(8.599)	(8.442)	(8.769)	(8.818)	(8.816)
AVERAGE UNIT OVER/(UNDER) RECOVERY 27/07/2018 - 16/08/2018	(7.459)	(5.614)	(4.893)	(4.896)	1.790

R/\$ EXCHANGE RATE - (R/\$14.4885 - 16/08/2018)

EXCHANGE RATE USED IN BASIC FUEL PRICE



INTERNATIONAL PRODUCT PRICES OF BASKET USED IN BASIC FUEL PRICE



BASIC FUEL PRICE IN SA CENTS PER LITRE

