

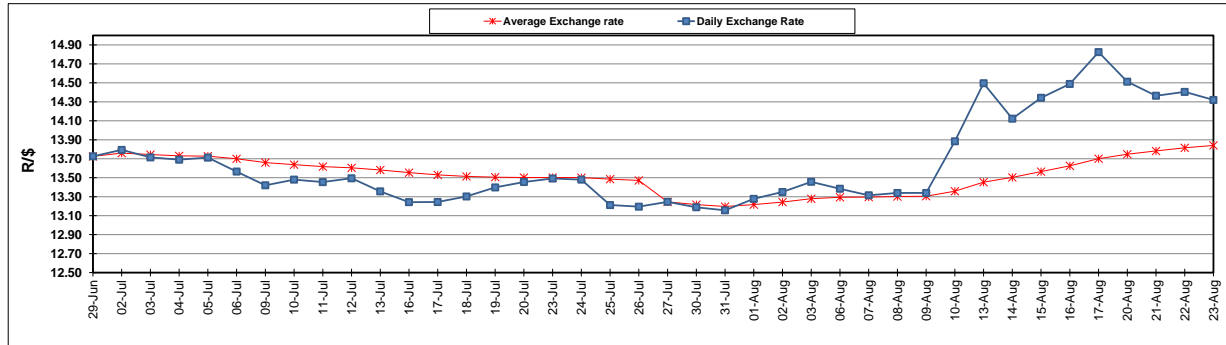
	PETROL 95 ULP	PETROL 93 ULP & LRP	DIESEL 0.05%	DIESEL 0.005%	ILL. PAR.
GAUTENG PUMP PRICE (SA c/l) AS FROM 04/08/2018	1 603.000	1 582.000	-	-	-
WHOLESALE PRICE (SA c/l) AS FROM 04/08/2018	-	-	1 440.830	1 445.230	953.088
SINGLE NATIONAL MAXIMUM RETAIL PRICE	-	-	-	-	1 233.000
BASIC FUEL PRICE - 23/08/2018 (SA c/l)	804.638	789.913	830.607	835.134	824.585
PRESS RELEASE CONTRIBUTION TO BFP 01/08/2018 - 23/08/2018 (SA c/l)	751.070	739.070	767.630	772.030	780.128
UNIT OVER/(UNDER) RECOVERY - 23/08/2018 (SA c/l)	(53.568)	(50.843)	(62.977)	(63.104)	(44.457)
AVERAGE BASIC FUEL PRICE 27/07/2018 - 23/08/2018	768.975	754.828	786.150	790.590	788.286
AVERAGE UNIT OVER/(UNDER) RECOVERY 27/07/2018 - 23/08/2018	(18.055)	(15.908)	(17.920)	(17.960)	(8.758)

ANALYSIS MOVEMENT OF AVERAGE OVER/(UNDER) RECOVERY

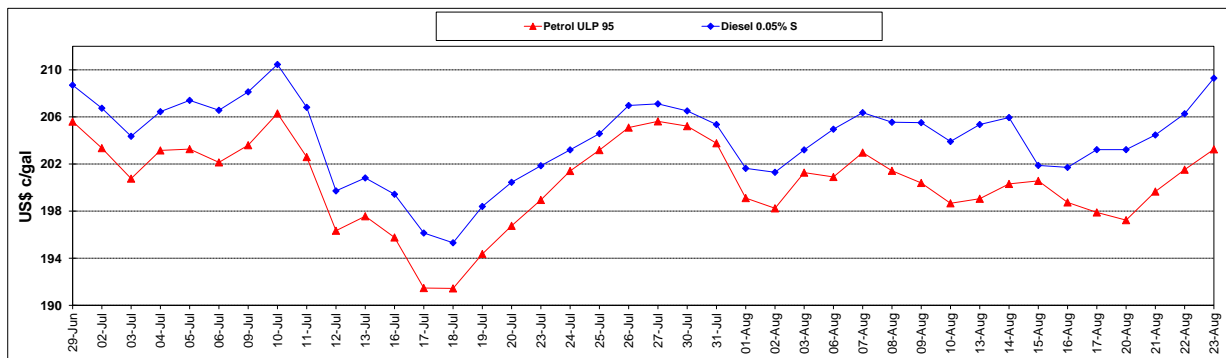
	PETROL 95	PETROL 93	DIESEL 0.05%	DIESEL 0.005%	ILL. PAR.
- MOVEMENT IN INTERNATIONAL PRODUCT PRICES	2.463	4.233	3.056	3.135	12.275
- MOVEMENT IN EXCHANGE RATE	(20.518)	(20.141)	(20.976)	(21.095)	(21.033)
AVERAGE UNIT OVER/(UNDER) RECOVERY 27/07/2018 - 23/08/2018	(18.055)	(15.908)	(17.920)	(17.960)	(8.758)

R/\$ EXCHANGE RATE - (R/\$14.3200 - 23/08/2018)

EXCHANGE RATE USED IN BASIC FUEL PRICE



INTERNATIONAL PRODUCT PRICES OF BASKET USED IN BASIC FUEL PRICE



BASIC FUEL PRICE IN SA CENTS PER LITRE

