

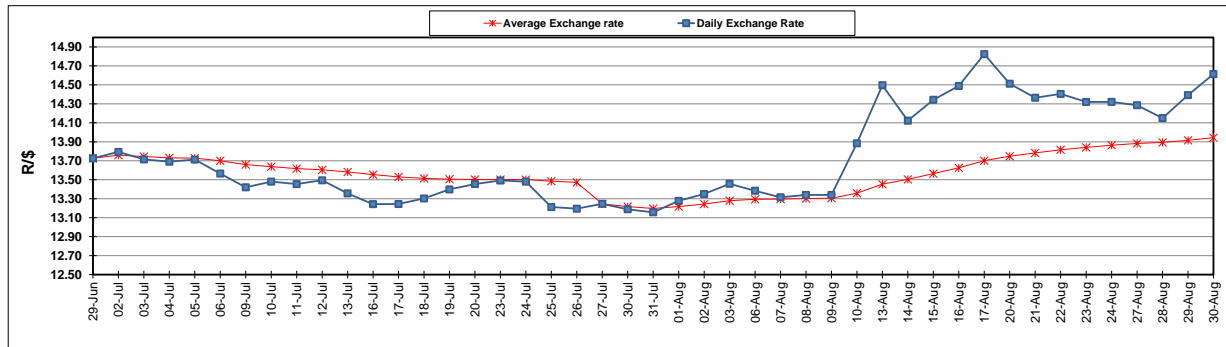
	PETROL 95 ULP	PETROL 93 ULP & LRP	DIESEL 0.05%	DIESEL 0.005%	ILL. PAR.
GAUTENG PUMP PRICE (SA c/l) AS FROM 04/08/2018	1 603.000	1 582.000	-	-	-
WHOLESALE PRICE (SA c/l) AS FROM 04/08/2018	-	-	1 440.830	1 445.230	953.088
SINGLE NATIONAL MAXIMUM RETAIL PRICE	-	-	-	-	1 233.000
BASIC FUEL PRICE - 30/08/2018 (SA c/l)	841.558	828.009	877.224	882.287	867.611
PRESS RELEASE CONTRIBUTION TO BFP 01/08/2018 - 30/08/2018 (SA c/l)	751.070	739.070	767.630	772.030	780.128
UNIT OVER/(UNDER) RECOVERY - 30/08/2018 (SA c/l)	(90.488)	(88.939)	(109.594)	(110.257)	(87.483)
AVERAGE BASIC FUEL PRICE 27/07/2018 - 30/08/2018	778.795	764.685	799.423	803.984	799.546
AVERAGE UNIT OVER/(UNDER) RECOVERY 27/07/2018 - 30/08/2018	(27.845)	(25.735)	(31.313)	(31.474)	(19.898)

ANALYSIS MOVEMENT OF AVERAGE OVER/(UNDER) RECOVERY

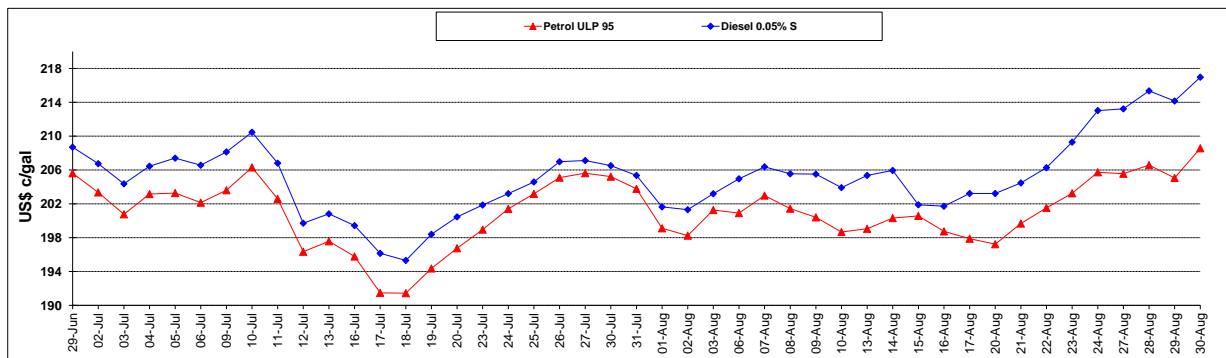
	PETROL 95	PETROL 93	DIESEL 0.05%	DIESEL 0.005%	ILL. PAR.
- MOVEMENT IN INTERNATIONAL PRODUCT PRICES	(1.498)	0.135	(4.268)	(4.275)	7.151
- MOVEMENT IN EXCHANGE RATE	(26.347)	(25.870)	(27.045)	(27.199)	(27.049)
AVERAGE UNIT OVER/(UNDER) RECOVERY 27/07/2018 - 30/08/2018	(27.845)	(25.735)	(31.313)	(31.474)	(19.898)

R/\$ EXCHANGE RATE - (R/\$14.6130 - 30/08/2018)

EXCHANGE RATE USED IN BASIC FUEL PRICE



INTERNATIONAL PRODUCT PRICES OF BASKET USED IN BASIC FUEL PRICE



BASIC FUEL PRICE IN SA CENTS PER LITRE

