

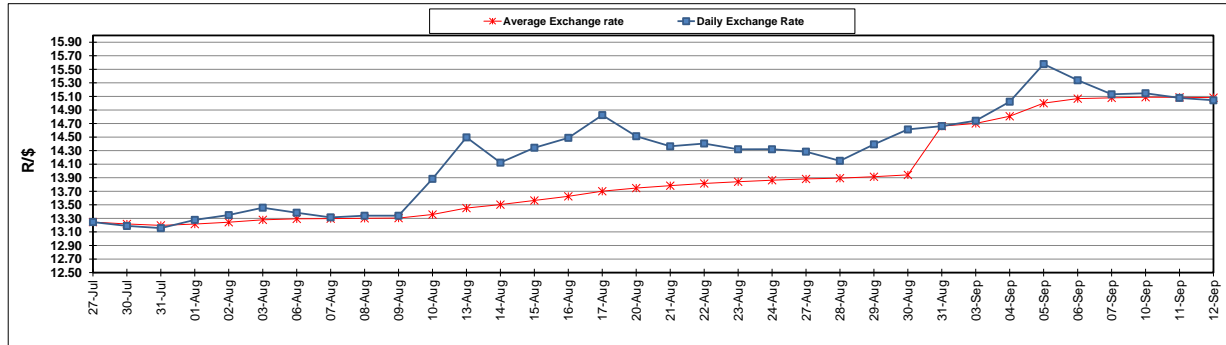
	PETROL 95 ULP	PETROL 93 ULP & LRP	DIESEL 0.05%	DIESEL 0.005%	ILL. PAR.
GAUTENG PUMP PRICE (SA c/l) AS FROM 05/09/2018	1 608.000	1 586.000	-	-	-
WHOLESALE PRICE (SA c/l) AS FROM 05/09/2018	-	-	1 440.830	1 445.230	953.088
SINGLE NATIONAL MAXIMUM RETAIL PRICE	-	-	-	-	1 233.000
BASIC FUEL PRICE - 11/09/2018 (SA c/l)	868.729	857.956	908.499	913.301	902.382
PRESS RELEASE CONTRIBUTION TO BFP 05/09/2018 - 11/09/2018 (SA c/l)	751.170	739.170	767.630	772.030	780.128
UNIT OVER/(UNDER) RECOVERY - 11/09/2018 (SA c/l)	(117.559)	(118.786)	(140.869)	(141.271)	(122.254)
AVERAGE BASIC FUEL PRICE 31/08/2018 - 11/09/2018	863.272	851.002	904.740	909.614	896.886
AVERAGE UNIT OVER/(UNDER) RECOVERY 31/08/2018 - 11/09/2018	(112.135)	(111.865)	(137.110)	(137.584)	(116.758)

ANALYSIS MOVEMENT OF AVERAGE OVER/(UNDER) RECOVERY

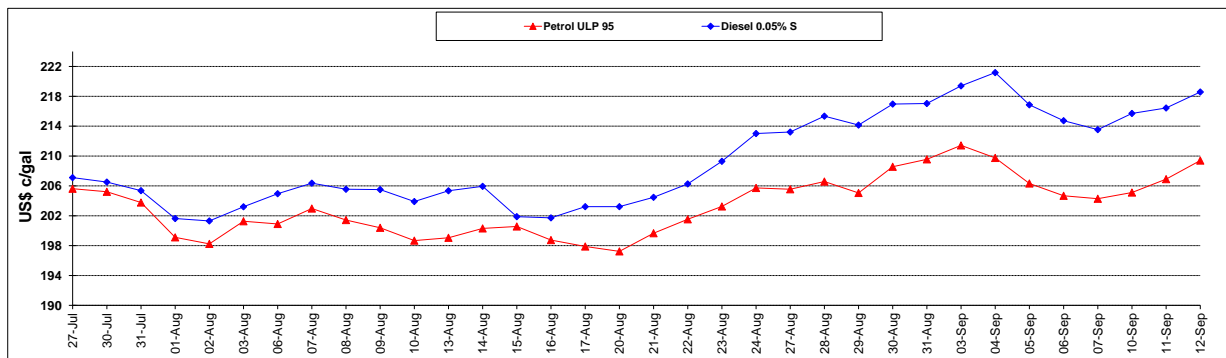
	PETROL 95	PETROL 93	DIESEL 0.05%	DIESEL 0.005%	ILL. PAR.
- MOVEMENT IN INTERNATIONAL PRODUCT PRICES	(46.924)	(47.581)	(68.767)	(68.873)	(49.008)
- MOVEMENT IN EXCHANGE RATE	(65.211)	(64.284)	(68.343)	(68.711)	(67.750)
AVERAGE UNIT OVER/(UNDER) RECOVERY 31/08/2018 - 11/09/2018	(112.135)	(111.865)	(137.110)	(137.584)	(116.758)

R/\$ EXCHANGE RATE - (R/\$15.0433 - 11/09/2018)

EXCHANGE RATE USED IN BASIC FUEL PRICE



INTERNATIONAL PRODUCT PRICES OF BASKET USED IN BASIC FUEL PRICE



BASIC FUEL PRICE IN SA CENTS PER LITRE

