

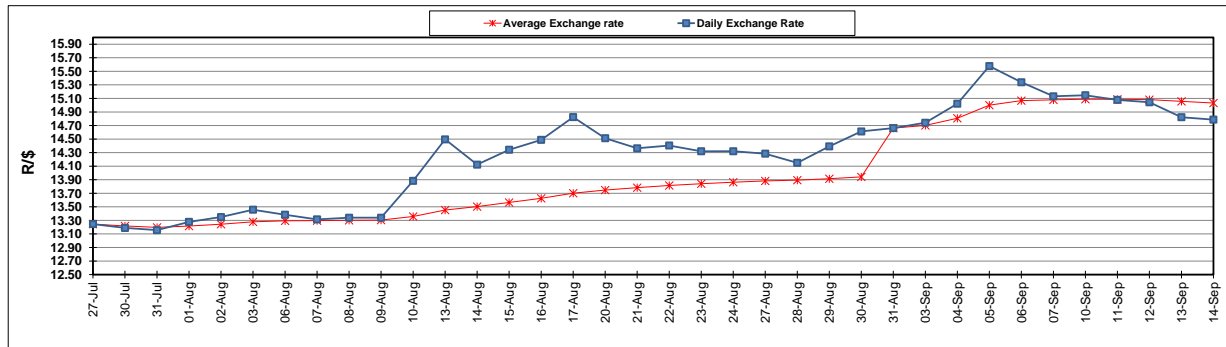
	PETROL 95 ULP	PETROL 93 ULP & LRP	DIESEL 0.05%	DIESEL 0.005%	ILL. PAR.
GAUTENG PUMP PRICE (SA c/l) AS FROM 05/09/2018	1 608.000	1 586.000	-	-	-
WHOLESALE PRICE (SA c/l) AS FROM 05/09/2018	-	-	1 440.830	1 445.230	953.088
SINGLE NATIONAL MAXIMUM RETAIL PRICE	-	-	-	-	1 233.000
BASIC FUEL PRICE - 14/09/2018 (SA c/l)	840.469	828.997	877.292	881.996	874.356
PRESS RELEASE CONTRIBUTION TO BFP 05/09/2018 - 14/09/2018 (SA c/l)	751.170	739.170	767.630	772.030	780.128
UNIT OVER/(UNDER) RECOVERY - 14/09/2018 (SA c/l)	(89.299)	(89.827)	(109.662)	(109.966)	(94.228)
AVERAGE BASIC FUEL PRICE 31/08/2018 - 14/09/2018	859.456	847.386	900.575	905.459	893.395
AVERAGE UNIT OVER/(UNDER) RECOVERY 31/08/2018 - 14/09/2018	(108.313)	(108.243)	(132.945)	(133.429)	(113.267)

ANALYSIS MOVEMENT OF AVERAGE OVER/(UNDER) RECOVERY

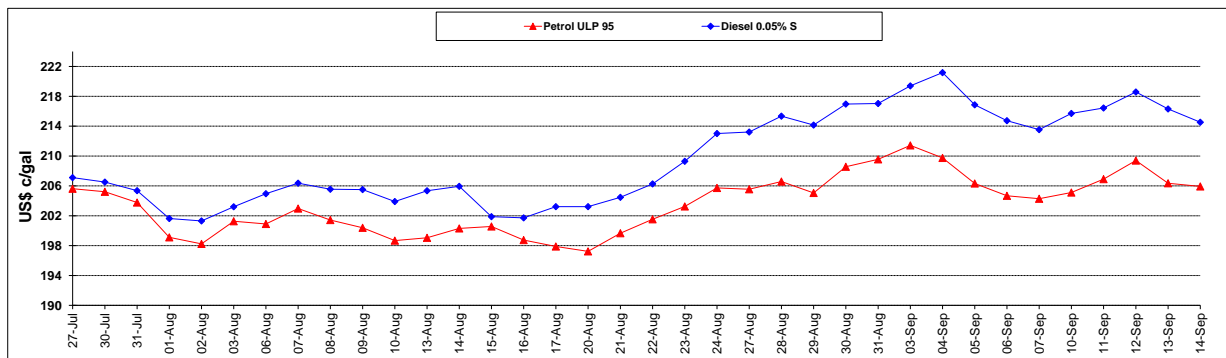
	PETROL 95	PETROL 93	DIESEL 0.05%	DIESEL 0.005%	ILL. PAR.
- MOVEMENT IN INTERNATIONAL PRODUCT PRICES	(46.055)	(46.859)	(67.708)	(67.838)	(48.550)
- MOVEMENT IN EXCHANGE RATE	(62.258)	(61.384)	(65.237)	(65.591)	(64.717)
AVERAGE UNIT OVER/(UNDER) RECOVERY 31/08/2018 - 14/09/2018	(108.313)	(108.243)	(132.945)	(133.429)	(113.267)

R/\$ EXCHANGE RATE - (R/\$14.7875 - 14/09/2018)

EXCHANGE RATE USED IN BASIC FUEL PRICE



INTERNATIONAL PRODUCT PRICES OF BASKET USED IN BASIC FUEL PRICE



BASIC FUEL PRICE IN SA CENTS PER LITRE

