

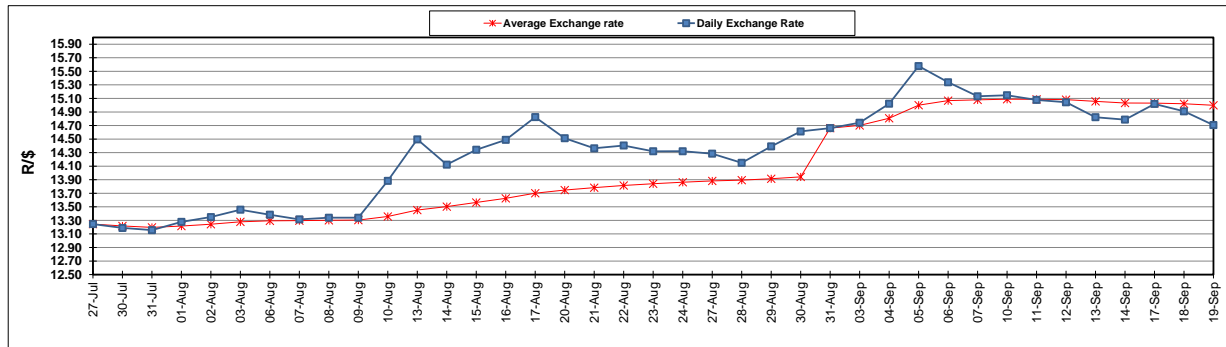
	PETROL 95 ULP	PETROL 93 ULP & LRP	DIESEL 0.05%	DIESEL 0.005%	ILL. PAR.
GAUTENG PUMP PRICE (SA c/l) AS FROM 05/09/2018	1 608.000	1 586.000	-	-	-
WHOLESALE PRICE (SA c/l) AS FROM 05/09/2018	-	-	1 440.830	1 445.230	953.088
SINGLE NATIONAL MAXIMUM RETAIL PRICE	-	-	-	-	1 233.000
BASIC FUEL PRICE - 19/09/2018 (SA c/l)	846.158	830.918	881.209	885.620	876.579
PRESS RELEASE CONTRIBUTION TO BFP 05/09/2018 - 19/09/2018 (SA c/l)	751.170	739.170	767.630	772.030	780.128
UNIT OVER/(UNDER) RECOVERY - 19/09/2018 (SA c/l)	(94.988)	(91.748)	(113.579)	(113.590)	(96.451)
AVERAGE BASIC FUEL PRICE 31/08/2018 - 19/09/2018	857.689	844.901	897.276	902.049	890.964
AVERAGE UNIT OVER/(UNDER) RECOVERY 31/08/2018 - 19/09/2018	(106.541)	(105.752)	(129.646)	(130.019)	(110.836)

ANALYSIS MOVEMENT OF AVERAGE OVER/(UNDER) RECOVERY

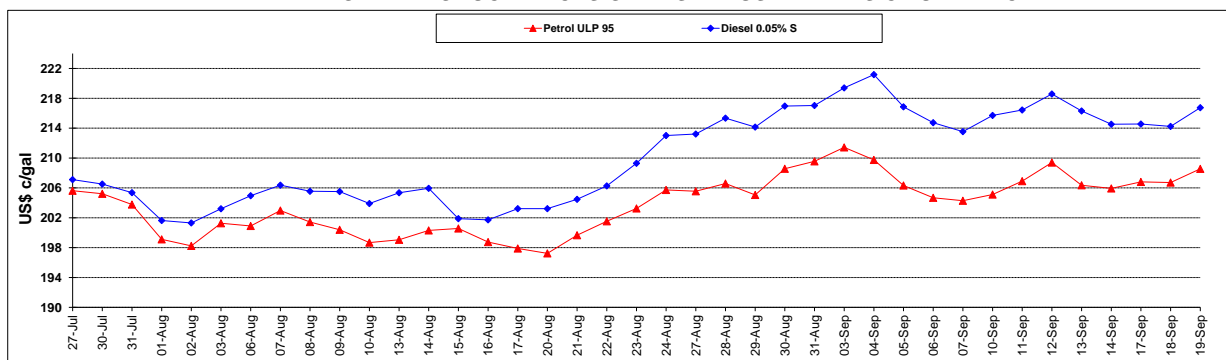
	PETROL 95	PETROL 93	DIESEL 0.05%	DIESEL 0.005%	ILL. PAR.
- MOVEMENT IN INTERNATIONAL PRODUCT PRICES	(46.149)	(46.262)	(66.468)	(66.505)	(48.102)
- MOVEMENT IN EXCHANGE RATE	(60.391)	(59.490)	(63.178)	(63.514)	(62.734)
AVERAGE UNIT OVER/(UNDER) RECOVERY 31/08/2018 - 19/09/2018	(106.541)	(105.752)	(129.646)	(130.019)	(110.836)

R/\$ EXCHANGE RATE - (R/\$14.7070 - 19/09/2018)

EXCHANGE RATE USED IN BASIC FUEL PRICE



INTERNATIONAL PRODUCT PRICES OF BASKET USED IN BASIC FUEL PRICE



BASIC FUEL PRICE IN SA CENTS PER LITRE

