

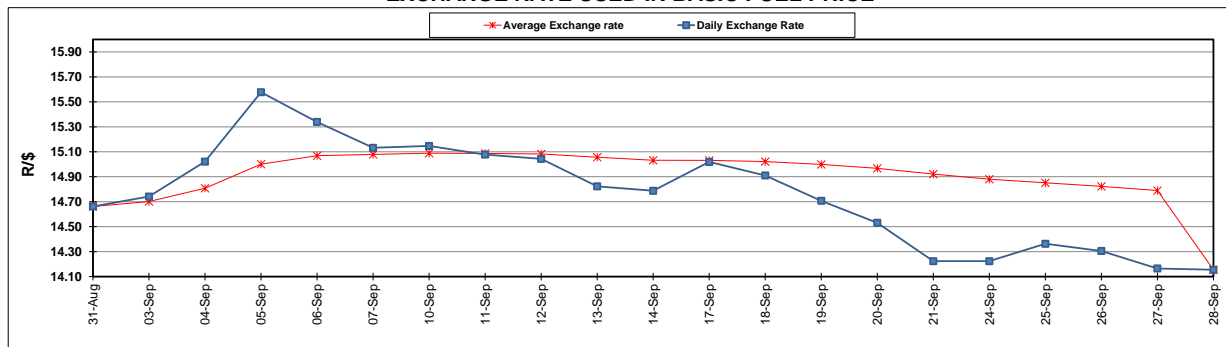
	PETROL 95 ULP	PETROL 93 ULP & LRP	DIESEL 0.05%	DIESEL 0.005%	ILL. PAR.
GAUTENG PUMP PRICE (SA c/l) AS FROM 05/09/2018	1 708.000	1 685.000	-	-	-
WHOLESALE PRICE (SA c/l) AS FROM 05/09/2018	-	-	1 564.830	1 569.230	1 057.088
SINGLE NATIONAL MAXIMUM RETAIL PRICE	-	-	-	-	1 372.000
BASIC FUEL PRICE - 28/09/2018 (SA c/l)	843.059	829.207	885.514	890.803	878.699
PRESS RELEASE CONTRIBUTION TO BFP 28/09/2018 - 28/09/2018 (SA c/l)	751.170	739.170	767.630	772.030	780.128
UNIT OVER/(UNDER) RECOVERY - 28/09/2018 (SA c/l)	(91.889)	(90.037)	(117.884)	(118.773)	(98.571)
AVERAGE BASIC FUEL PRICE 28/09/2018 - 28/09/2018	843.059	829.207	885.514	890.803	878.699
AVERAGE UNIT OVER/(UNDER) RECOVERY 28/09/2018 - 28/09/2018	(91.889)	(90.037)	(117.884)	(118.773)	(98.571)

ANALYSIS MOVEMENT OF AVERAGE OVER/(UNDER) RECOVERY

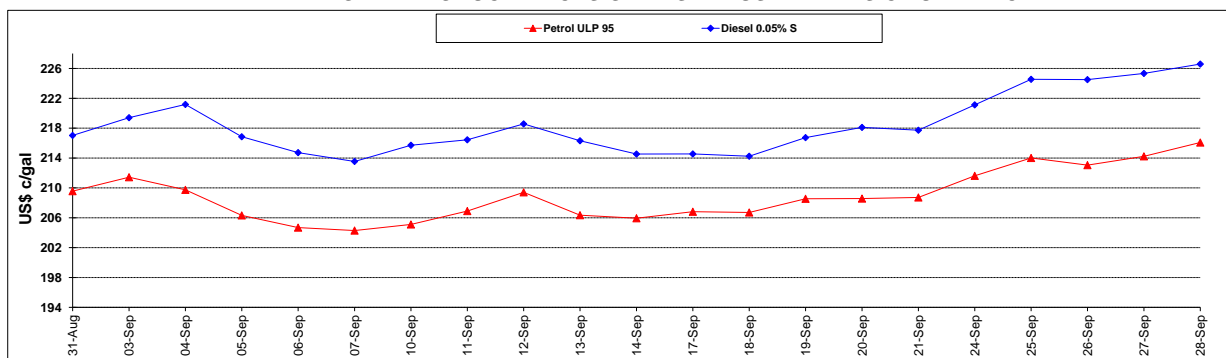
	PETROL 95	PETROL 93	DIESEL 0.05%	DIESEL 0.005%	ILL. PAR.
- MOVEMENT IN INTERNATIONAL PRODUCT PRICES	(129.703)	(127.230)	(157.602)	(158.729)	(137.984)
- MOVEMENT IN EXCHANGE RATE	37.814	37.193	39.718	39.956	39.413
AVERAGE UNIT OVER/(UNDER) RECOVERY 28/09/2018 - 28/09/2018	(91.889)	(90.037)	(117.884)	(118.773)	(98.571)

R/\$ EXCHANGE RATE - (R/\$14.1550 - 28/09/2018)

EXCHANGE RATE USED IN BASIC FUEL PRICE



INTERNATIONAL PRODUCT PRICES OF BASKET USED IN BASIC FUEL PRICE



BASIC FUEL PRICE IN SA CENTS PER LITRE

