

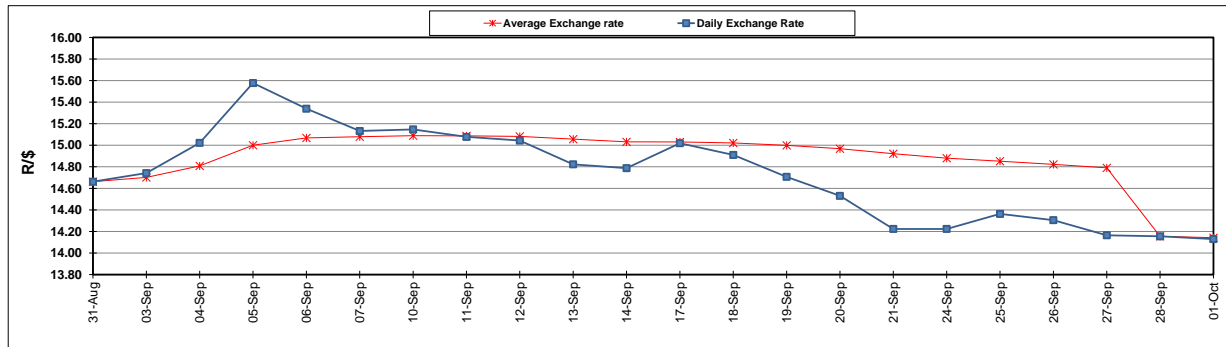
	PETROL 95 ULP	PETROL 93 ULP & LRP	DIESEL 0.05%	DIESEL 0.005%	ILL. PAR.
GAUTENG PUMP PRICE (SA c/l) AS FROM 05/09/2018	1 708.000	1 685.000	-	-	-
WHOLESALE PRICE (SA c/l) AS FROM 05/09/2018	-	-	1 564.830	1 569.230	1 057.088
SINGLE NATIONAL MAXIMUM RETAIL PRICE	-	-	-	-	1 372.000
BASIC FUEL PRICE - 01/10/2018 (SA c/l)	848.760	836.902	895.816	901.637	887.294
PRESS RELEASE CONTRIBUTION TO BFP 28/09/2018 - 01/10/2018 (SA c/l)	751.170	739.170	767.630	772.030	780.128
UNIT OVER/(UNDER) RECOVERY - 01/10/2018 (SA c/l)	(97.590)	(97.732)	(128.186)	(129.607)	(107.166)
AVERAGE BASIC FUEL PRICE 28/09/2018 - 01/10/2018	845.910	833.055	890.665	896.220	882.997
AVERAGE UNIT OVER/(UNDER) RECOVERY 28/09/2018 - 01/10/2018	(94.740)	(93.885)	(123.035)	(124.190)	(102.869)

ANALYSIS MOVEMENT OF AVERAGE OVER/(UNDER) RECOVERY

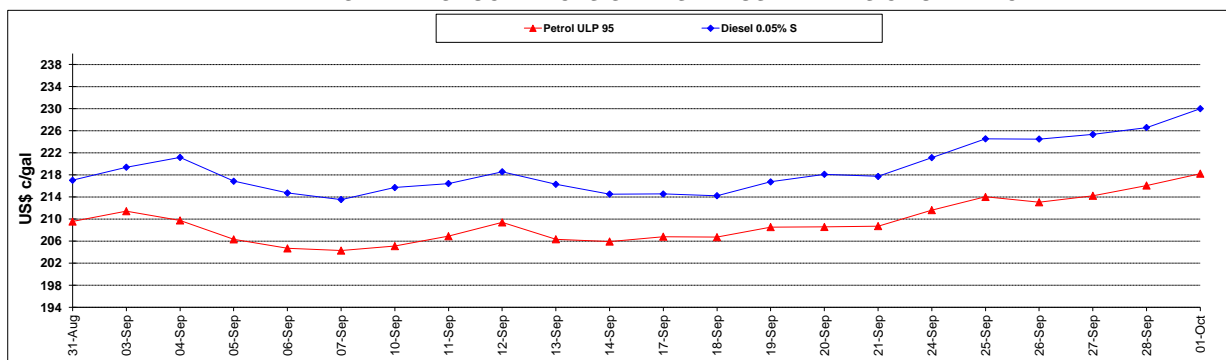
	PETROL 95	PETROL 93	DIESEL 0.05%	DIESEL 0.005%	ILL. PAR.
- MOVEMENT IN INTERNATIONAL PRODUCT PRICES	(133.485)	(132.041)	(163.830)	(165.239)	(143.312)
- MOVEMENT IN EXCHANGE RATE	38.745	38.156	40.795	41.049	40.444
AVERAGE UNIT OVER/(UNDER) RECOVERY 01/10/2018 - 01/10/2018	(94.740)	(93.885)	(123.035)	(124.190)	(102.869)

R/\$ EXCHANGE RATE - (R/\$14.1293 - 01/10/2018)

EXCHANGE RATE USED IN BASIC FUEL PRICE



INTERNATIONAL PRODUCT PRICES OF BASKET USED IN BASIC FUEL PRICE



BASIC FUEL PRICE IN SA CENTS PER LITRE

