

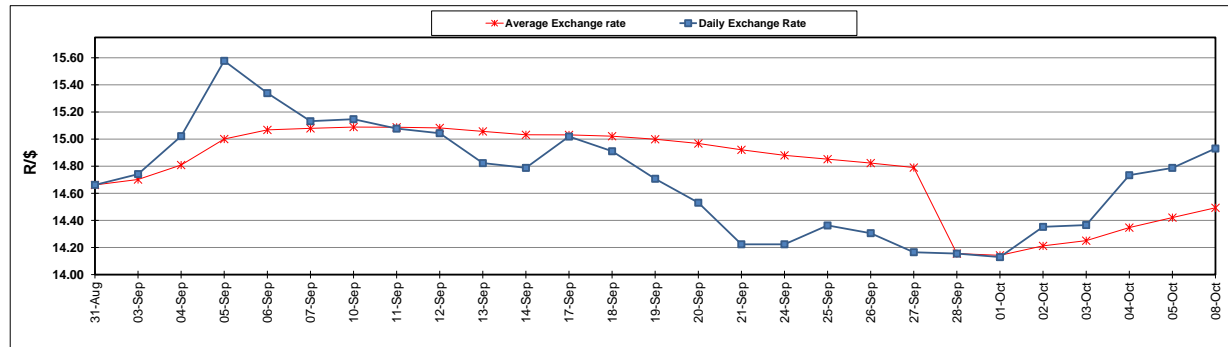
	PETROL 95 ULP	PETROL 93 ULP & LRP	DIESEL 0.05%	DIESEL 0.005%	ILL. PAR.
GAUTENG PUMP PRICE (SA c/l) AS FROM 03/10/2018	1 708.000	1 685.000	-	-	-
WHOLESALE PRICE (SA c/l) AS FROM 03/10/2018	-	-	1 564.830	1 569.230	1 057.088
SINGLE NATIONAL MAXIMUM RETAIL PRICE	-	-	-	-	1 372.000
BASIC FUEL PRICE - 08/10/2018 (SA c/l)	884.990	869.563	942.597	950.982	941.873
PRESS RELEASE CONTRIBUTION TO BFP 03/10/2018 - 08/10/2018 (SA c/l)	851.170	838.170	891.630	896.030	884.128
UNIT OVER/(UNDER) RECOVERY - 08/10/2018 (SA c/l)	(33.820)	(31.393)	(50.967)	(54.952)	(57.745)
AVERAGE BASIC FUEL PRICE 28/09/2018 - 08/10/2018	870.081	856.971	924.408	931.201	919.257
AVERAGE UNIT OVER/(UNDER) RECOVERY 28/09/2018 - 08/10/2018	(61.768)	(61.230)	(85.921)	(88.314)	(79.701)

ANALYSIS MOVEMENT OF AVERAGE OVER/(UNDER) RECOVERY

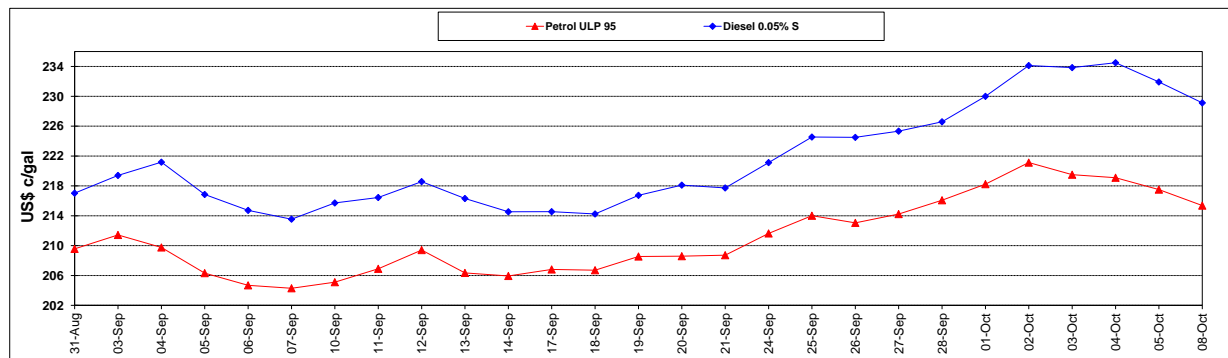
	PETROL 95	PETROL 93	DIESEL 0.05%	DIESEL 0.005%	ILL. PAR.
- MOVEMENT IN INTERNATIONAL PRODUCT PRICES	(79.568)	(78.762)	(104.832)	(107.364)	(98.506)
- MOVEMENT IN EXCHANGE RATE	17.800	17.532	18.911	19.050	18.806
AVERAGE UNIT OVER/(UNDER) RECOVERY 28/09/2018 - 08/10/2018	(61.768)	(61.230)	(85.921)	(88.314)	(79.701)

R/\$ EXCHANGE RATE - (R/\$14.9303 - 08/10/2018)

EXCHANGE RATE USED IN BASIC FUEL PRICE



INTERNATIONAL PRODUCT PRICES OF BASKET USED IN BASIC FUEL PRICE



BASIC FUEL PRICE IN SA CENTS PER LITRE

