

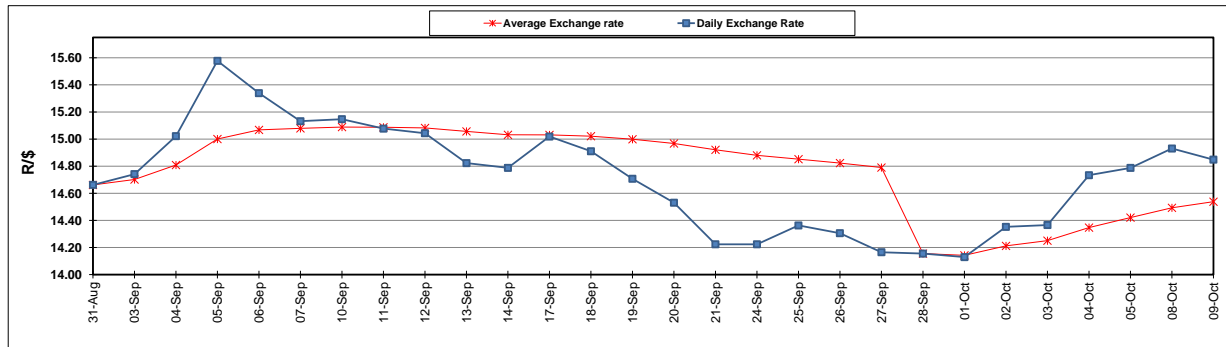
	PETROL 95 ULP	PETROL 93 ULP & LRP	DIESEL 0.05%	DIESEL 0.005%	ILL. PAR.
GAUTENG PUMP PRICE (SA c/l) AS FROM 03/10/2018	1 708.000	1 685.000	-	-	-
WHOLESALE PRICE (SA c/l) AS FROM 03/10/2018	-	-	1 564.830	1 569.230	1 057.088
SINGLE NATIONAL MAXIMUM RETAIL PRICE	-	-	-	-	1 372.000
BASIC FUEL PRICE - 09/10/2018 (SA c/l)	884.417	869.285	950.645	958.999	949.010
PRESS RELEASE CONTRIBUTION TO BFP 03/10/2018 - 09/10/2018 (SA c/l)	851.170	838.170	891.630	896.030	884.128
UNIT OVER/(UNDER) RECOVERY - 09/10/2018 (SA c/l)	(33.247)	(31.115)	(59.015)	(62.969)	(64.882)
AVERAGE BASIC FUEL PRICE 28/09/2018 - 09/10/2018	871.873	858.511	927.687	934.676	922.976
AVERAGE UNIT OVER/(UNDER) RECOVERY 28/09/2018 - 09/10/2018	(58.203)	(57.466)	(82.557)	(85.146)	(77.848)

ANALYSIS MOVEMENT OF AVERAGE OVER/(UNDER) RECOVERY

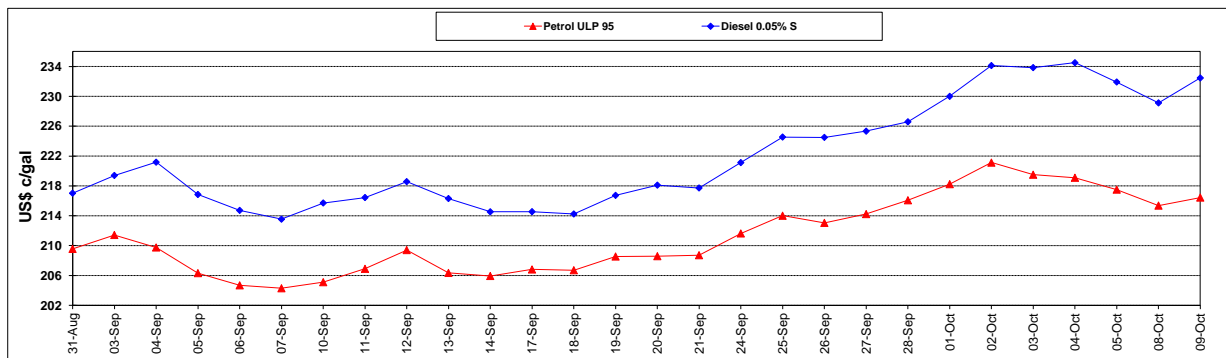
	PETROL 95	PETROL 93	DIESEL 0.05%	DIESEL 0.005%	ILL. PAR.
- MOVEMENT IN INTERNATIONAL PRODUCT PRICES	(73.328)	(72.359)	(98.651)	(101.361)	(93.860)
- MOVEMENT IN EXCHANGE RATE	15.125	14.893	16.094	16.215	16.012
AVERAGE UNIT OVER/(UNDER) RECOVERY 28/09/2018 - 09/10/2018	(58.203)	(57.466)	(82.557)	(85.146)	(77.848)

R/\$ EXCHANGE RATE - (R/\$14.8480 - 09/10/2018)

EXCHANGE RATE USED IN BASIC FUEL PRICE



INTERNATIONAL PRODUCT PRICES OF BASKET USED IN BASIC FUEL PRICE



BASIC FUEL PRICE IN SA CENTS PER LITRE

