

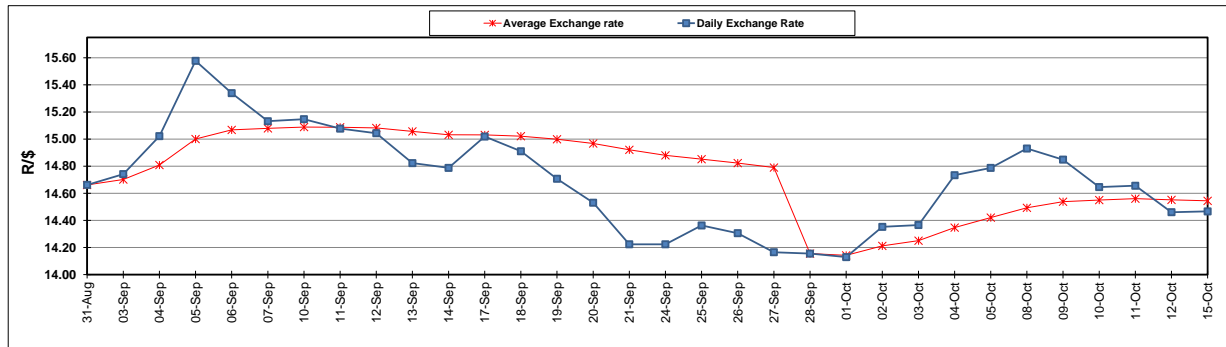
	PETROL 95 ULP	PETROL 93 ULP & LRP	DIESEL 0.05%	DIESEL 0.005%	ILL. PAR.
GAUTENG PUMP PRICE (SA c/l) AS FROM 03/10/2018	1 708.000	1 685.000	-	-	-
WHOLESALE PRICE (SA c/l) AS FROM 03/10/2018	-	-	1 564.830	1 569.230	1 057.088
SINGLE NATIONAL MAXIMUM RETAIL PRICE	-	-	-	-	1 372.000
BASIC FUEL PRICE - 15/10/2018 (SA c/l)	814.457	799.947	895.993	903.780	896.108
PRESS RELEASE CONTRIBUTION TO BFP 03/10/2018 - 15/10/2018 (SA c/l)	851.170	838.170	891.630	896.030	884.128
UNIT OVER/(UNDER) RECOVERY - 15/10/2018 (SA c/l)	36.713	38.223	(4.363)	(7.750)	(11.980)
AVERAGE BASIC FUEL PRICE 28/09/2018 - 15/10/2018	859.373	845.811	922.369	929.661	918.913
AVERAGE UNIT OVER/(UNDER) RECOVERY 28/09/2018 - 15/10/2018	(33.203)	(32.391)	(61.739)	(64.631)	(60.785)

ANALYSIS MOVEMENT OF AVERAGE OVER/(UNDER) RECOVERY

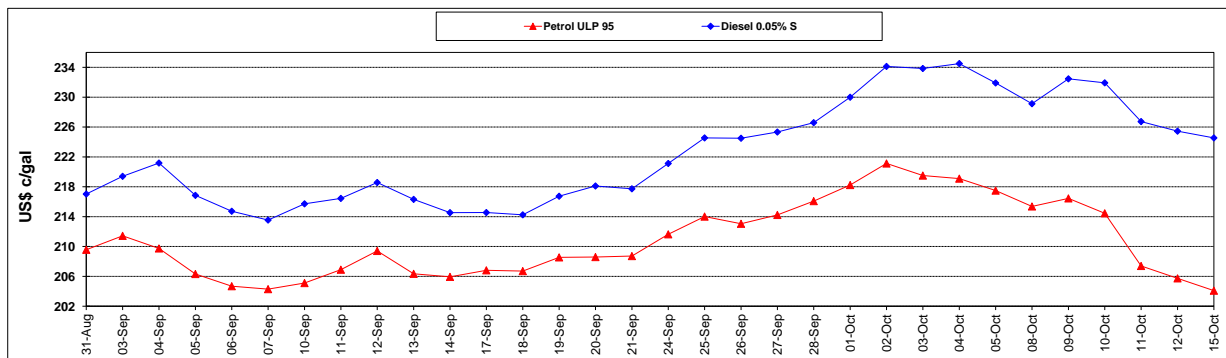
	PETROL 95	PETROL 93	DIESEL 0.05%	DIESEL 0.005%	ILL. PAR.
- MOVEMENT IN INTERNATIONAL PRODUCT PRICES	(47.721)	(46.680)	(77.321)	(80.336)	(76.309)
- MOVEMENT IN EXCHANGE RATE	14.518	14.289	15.582	15.705	15.524
AVERAGE UNIT OVER/(UNDER) RECOVERY 28/09/2018 - 15/10/2018	(33.203)	(32.391)	(61.739)	(64.631)	(60.785)

R/\$ EXCHANGE RATE - (R/\$14.4665 - 15/10/2018)

EXCHANGE RATE USED IN BASIC FUEL PRICE



INTERNATIONAL PRODUCT PRICES OF BASKET USED IN BASIC FUEL PRICE



BASIC FUEL PRICE IN SA CENTS PER LITRE

