

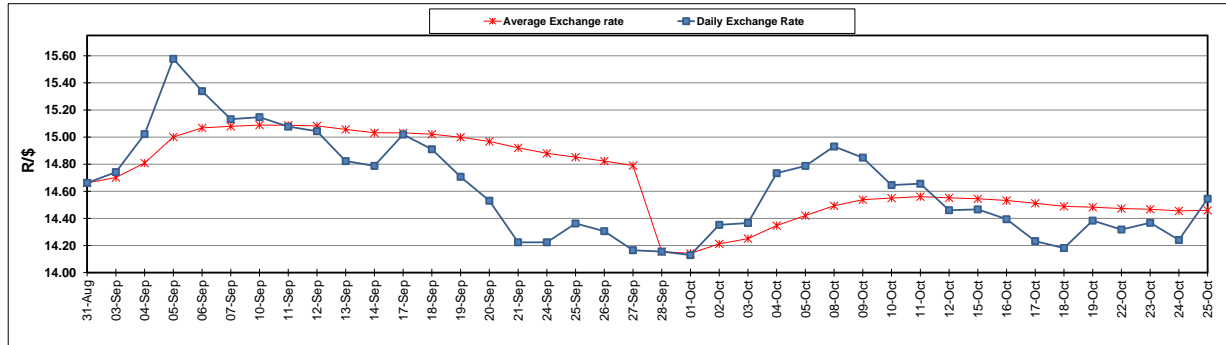
	PETROL 95 ULP	PETROL 93 ULP & LRP	DIESEL 0.05%	DIESEL 0.005%	ILL. PAR.
GAUTENG PUMP PRICE (SA c/l) AS FROM 03/10/2018	1 708.000	1 685.000	-	-	-
WHOLESALE PRICE (SA c/l) AS FROM 03/10/2018	-	-	1 564.830	1 569.230	1 057.088
SINGLE NATIONAL MAXIMUM RETAIL PRICE	-	-	-	-	1 372.000
BASIC FUEL PRICE - 25/10/2018 (SA c/l)	769.796	757.221	886.120	891.850	879.684
PRESS RELEASE CONTRIBUTION TO BFP 03/10/2018 - 25/10/2018 (SA c/l)	851.170	838.170	891.630	896.030	884.128
UNIT OVER/(UNDER) RECOVERY - 25/10/2018 (SA c/l)	81.374	80.949	5.510	4.180	4.444
AVERAGE BASIC FUEL PRICE 28/09/2018 - 25/10/2018	828.900	815.976	906.449	913.269	903.456
AVERAGE UNIT OVER/(UNDER) RECOVERY 28/09/2018 - 25/10/2018	7.270	7.345	(33.419)	(35.839)	(34.928)

ANALYSIS MOVEMENT OF AVERAGE OVER/(UNDER) RECOVERY

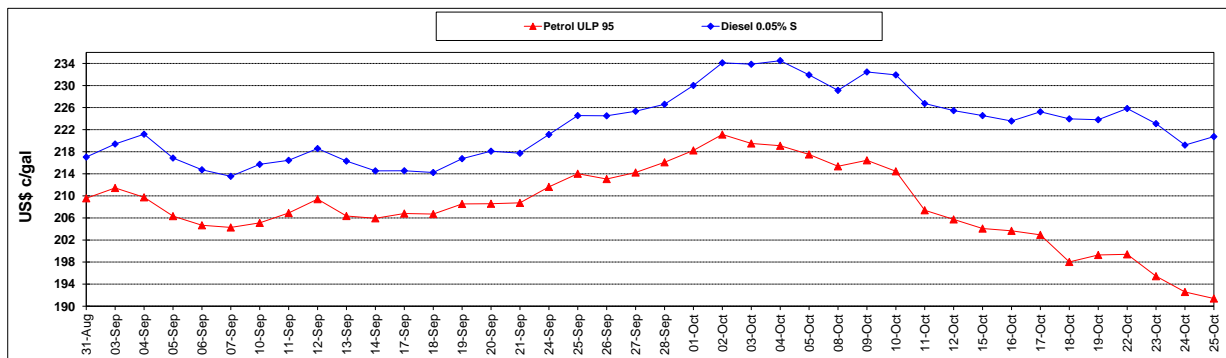
	PETROL 95	PETROL 93	DIESEL 0.05%	DIESEL 0.005%	ILL. PAR.
- MOVEMENT IN INTERNATIONAL PRODUCT PRICES	(11.665)	(11.295)	(54.125)	(56.701)	(55.566)
- MOVEMENT IN EXCHANGE RATE	18.935	18.639	20.706	20.862	20.638
AVERAGE UNIT OVER/(UNDER) RECOVERY 28/09/2018 - 25/10/2018	7.270	7.345	(33.419)	(35.839)	(34.928)

R/\$ EXCHANGE RATE - (R/\$14.5448 - 25/10/2018)

EXCHANGE RATE USED IN BASIC FUEL PRICE



INTERNATIONAL PRODUCT PRICES OF BASKET USED IN BASIC FUEL PRICE



BASIC FUEL PRICE IN SA CENTS PER LITRE

