

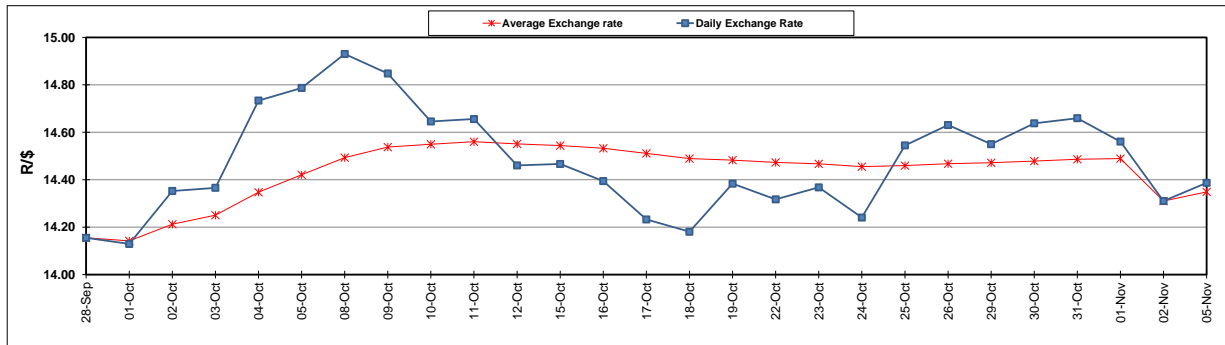
	PETROL 95 ULP	PETROL 93 ULP & LRP	DIESEL 0.05%	DIESEL 0.005%	ILL. PAR.
GAUTENG PUMP PRICE (SA c/l) AS FROM 07/11/2018	1 708.000	1 685.000	-	-	-
WHOLESALE PRICE (SA c/l) AS FROM 07/11/2018	-	-	1 612.750	1 620.150	1 085.088
SINGLE NATIONAL MAXIMUM RETAIL PRICE	-	-	-	-	1 409.000
BASIC FUEL PRICE - 05/11/2018 (SA c/l)	711.497	701.384	832.218	837.944	831.470
PRESS RELEASE CONTRIBUTION TO BFP 02/11/2018 - 05/11/2018 (SA c/l)	851.170	838.170	891.630	896.030	884.128
UNIT OVER/(UNDER) RECOVERY - 05/11/2018 (SA c/l)	139.673	136.786	59.412	58.086	52.658
AVERAGE BASIC FUEL PRICE 02/11/2018 - 05/11/2018	711.727	701.641	833.144	839.094	831.532
AVERAGE UNIT OVER/(UNDER) RECOVERY 02/11/2018 - 05/11/2018	139.443	136.530	58.486	56.937	52.597

ANALYSIS MOVEMENT OF AVERAGE OVER/(UNDER) RECOVERY

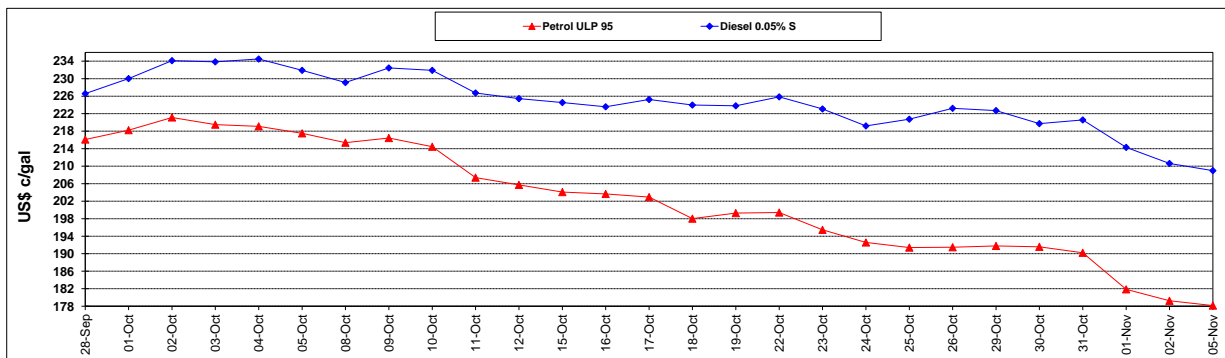
	PETROL 95	PETROL 93	DIESEL 0.05%	DIESEL 0.005%	ILL. PAR.
- MOVEMENT IN INTERNATIONAL PRODUCT PRICES	132.474	129.659	50.328	48.720	44.454
- MOVEMENT IN EXCHANGE RATE	6.969	6.870	8.158	8.216	8.142
AVERAGE UNIT OVER/(UNDER) RECOVERY 02/11/2018 - 05/11/2018	139.443	136.530	58.486	56.937	52.597

R/\$ EXCHANGE RATE - (R/\$14.3870 - 05/11/2018)

EXCHANGE RATE USED IN BASIC FUEL PRICE



INTERNATIONAL PRODUCT PRICES OF BASKET USED IN BASIC FUEL PRICE



BASIC FUEL PRICE IN SA CENTS PER LITRE

