

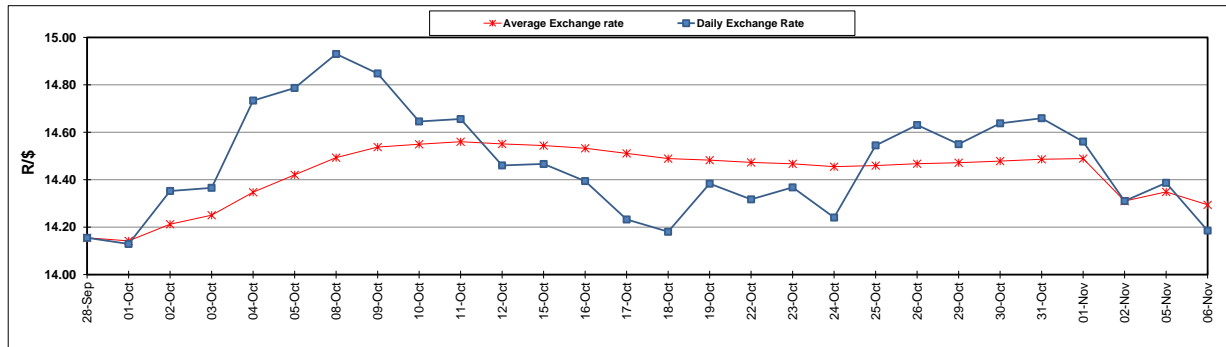
	PETROL 95 ULP	PETROL 93 ULP & LRP	DIESEL 0.05%	DIESEL 0.005%	ILL. PAR.
GAUTENG PUMP PRICE (SA c/l) AS FROM 07/11/2018	1 708.000	1 685.000	-	-	-
WHOLESALE PRICE (SA c/l) AS FROM 07/11/2018	-	-	1 612.750	1 620.150	1 085.088
SINGLE NATIONAL MAXIMUM RETAIL PRICE	-	-	-	-	1 409.000
BASIC FUEL PRICE - 06/11/2018 (SA c/l)	694.274	684.302	817.072	823.548	815.388
PRESS RELEASE CONTRIBUTION TO BFP 02/11/2018 - 06/11/2018 (SA c/l)	851.170	838.170	891.630	896.030	884.128
UNIT OVER/(UNDER) RECOVERY - 06/11/2018 (SA c/l)	156.896	153.868	74.558	72.482	68.740
AVERAGE BASIC FUEL PRICE 02/11/2018 - 06/11/2018	705.909	695.861	827.787	833.912	826.150
AVERAGE UNIT OVER/(UNDER) RECOVERY 02/11/2018 - 06/11/2018	145.261	142.309	63.843	62.118	57.978

ANALYSIS MOVEMENT OF AVERAGE OVER/(UNDER) RECOVERY

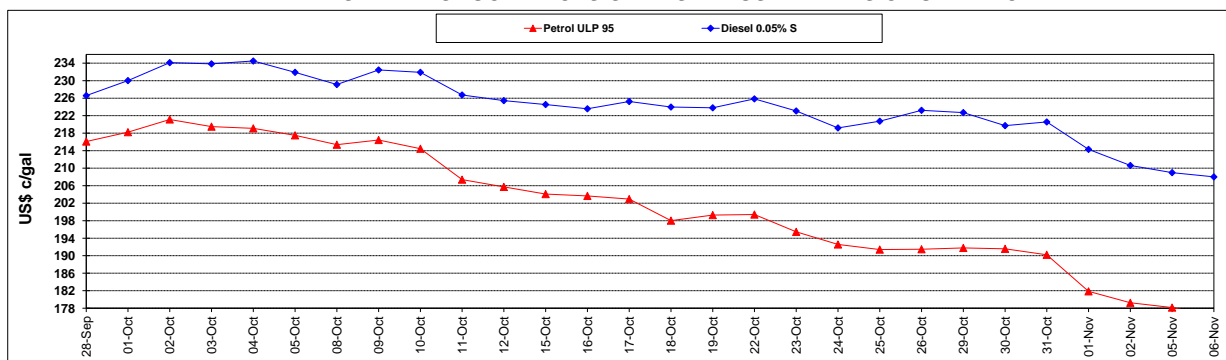
	PETROL 95	PETROL 93	DIESEL 0.05%	DIESEL 0.005%	ILL. PAR.
- MOVEMENT IN INTERNATIONAL PRODUCT PRICES	135.636	132.821	52.556	50.748	46.714
- MOVEMENT IN EXCHANGE RATE	9.625	9.488	11.287	11.370	11.264
AVERAGE UNIT OVER/(UNDER) RECOVERY 02/11/2018 - 06/11/2018	145.261	142.309	63.843	62.118	57.978

R/\$ EXCHANGE RATE - (R/\$14.1855 - 06/11/2018)

EXCHANGE RATE USED IN ULCIC FUEL PRICE



INTERNATIONAL PRODUCT PRICES OF BASKET USED IN BASIC FUEL PRICE



BASIC FUEL PRICE IN SA CENTS PER LITRE

