

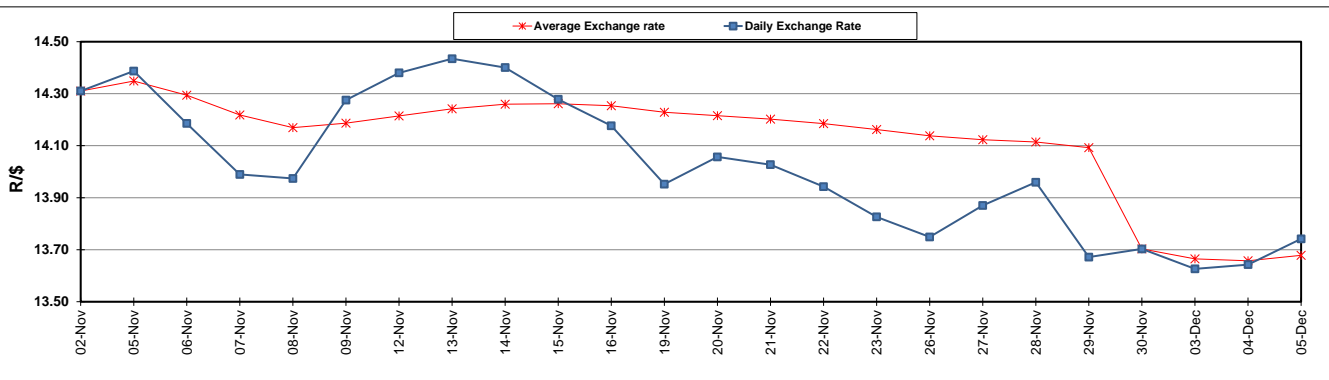
	PETROL 95 ULP	PETROL 93 ULP & LRP	DIESEL 0.05%	DIESEL 0.005%	ILL. PAR.
GAUTENG PUMP PRICE (SA c/l) AS FROM 05/12/2018	1 524.000	1 501.000	-	-	-
WHOLESALE PRICE (SA c/l) AS FROM 05/12/2018	-	-	1 467.340	1 472.740	951.678
SINGLE NATIONAL MAXIMUM RETAIL PRICE	-	-	-	-	1 231.000
BASIC FUEL PRICE - 05/12/2018 (SA c/l)	570.785	559.721	669.273	672.313	678.374
PRESS RELEASE CONTRIBUTION TO BFP 05/12/2018 - 05/12/2018 (SA c/l)	637.550	624.550	767.630	773.030	774.128
UNIT OVER/(UNDER) RECOVERY - 05/12/2018 (SA c/l)	66.765	64.829	98.357	100.717	95.754
AVERAGE BASIC FUEL PRICE 30/11/2018 - 05/12/2018	568.148	558.229	664.905	668.276	676.460
AVERAGE UNIT OVER/(UNDER) RECOVERY 30/11/2018 - 05/12/2018	213.177	210.097	215.225	218.754	201.168

### ANALYSIS MOVEMENT OF AVERAGE OVER/(UNDER) RECOVERY

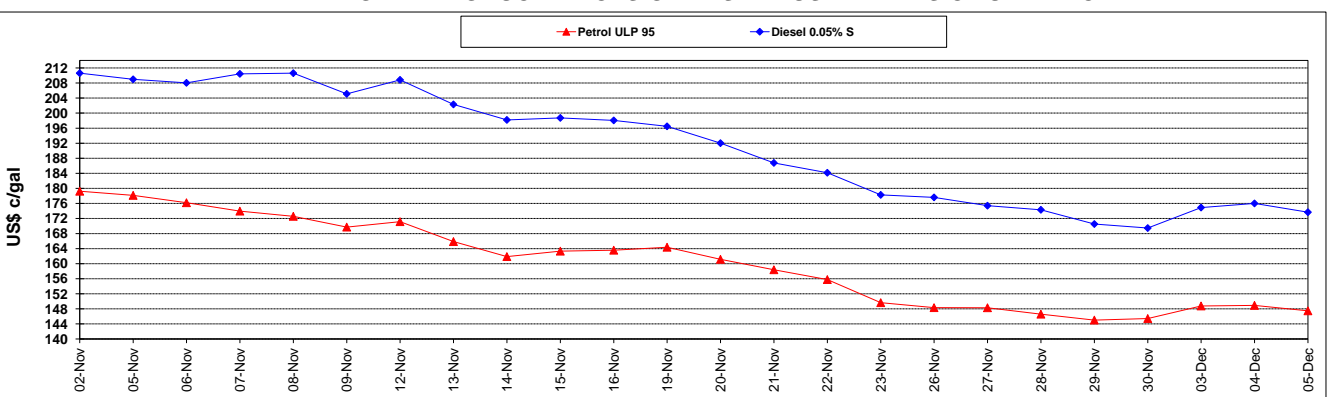
	PETROL 95	PETROL 93	DIESEL 0.05%	DIESEL 0.005%	ILL. PAR.
- MOVEMENT IN INTERNATIONAL PRODUCT PRICES	195.981	193.200	195.100	198.527	180.694
- MOVEMENT IN EXCHANGE RATE	17.196	16.896	20.125	20.227	20.474
AVERAGE UNIT OVER/(UNDER) RECOVERY 30/11/2018 - 05/12/2018	213.177	210.097	215.225	218.754	201.168

### R/\$ EXCHANGE RATE - (R/\$13.7415 - 05/12/2018)

#### EXCHANGE RATE USED IN BASIC FUEL PRICE



#### INTERNATIONAL PRODUCT PRICES OF BASKET USED IN BASIC FUEL PRICE



#### BASIC FUEL PRICE IN SA CENTS PER LITRE

