

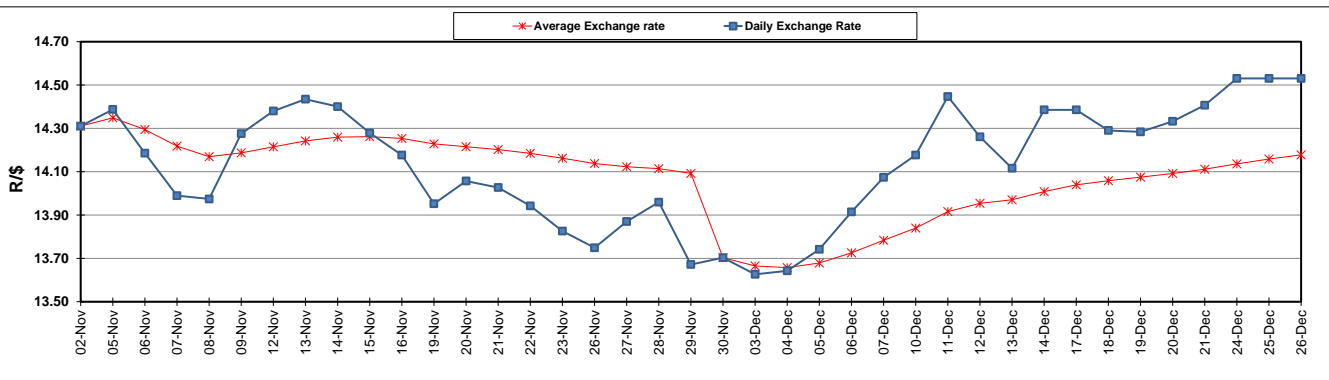
	PETROL 95 ULP	PETROL 93 ULP & LRP	DIESEL 0.05%	DIESEL 0.005%	ILL. PAR.
GAUTENG PUMP PRICE (SA c/l) AS FROM 05/12/2018	1 524.000	1 501.000	-	-	-
WHOLESALE PRICE (SA c/l) AS FROM 05/12/2018	-	-	1 467.340	1 472.740	951.678
SINGLE NATIONAL MAXIMUM RETAIL PRICE	-	-	-	-	1 231.000
BASIC FUEL PRICE - 26/12/2018 (SA c/l)	527.381	514.581	609.154	613.117	628.363
PRESS RELEASE CONTRIBUTION TO BFP 05/12/2018 - 26/12/2018 (SA c/l)	637.550	624.550	767.630	773.030	774.128
UNIT OVER/(UNDER) RECOVERY - 26/12/2018 (SA c/l)	110.169	109.969	158.476	159.913	145.765
AVERAGE BASIC FUEL PRICE 30/11/2018 - 26/12/2018	566.917	554.515	658.689	662.367	672.446
AVERAGE UNIT OVER/(UNDER) RECOVERY 30/11/2018 - 26/12/2018	100.901	100.304	132.625	134.663	123.472

### ANALYSIS MOVEMENT OF AVERAGE OVER/(UNDER) RECOVERY

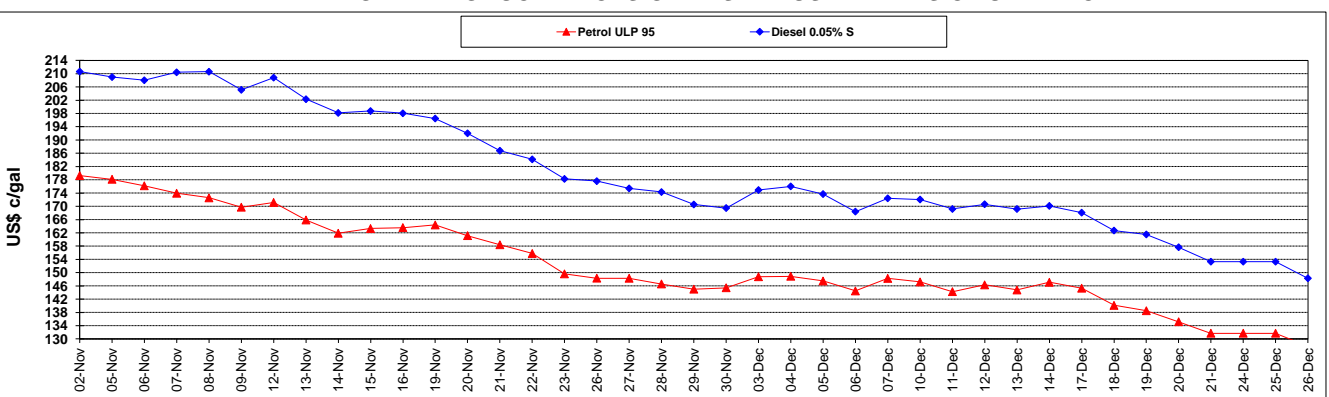
	PETROL 95	PETROL 93	DIESEL 0.05%	DIESEL 0.005%	ILL. PAR.
- MOVEMENT IN INTERNATIONAL PRODUCT PRICES	104.320	103.647	136.597	138.657	127.526
- MOVEMENT IN EXCHANGE RATE	(3.419)	(3.344)	(3.972)	(3.994)	(4.055)
AVERAGE UNIT OVER/(UNDER) RECOVERY 30/11/2018 - 26/12/2018	100.901	100.304	132.625	134.663	123.472

### R/\$ EXCHANGE RATE - (R/\$14.5305 - 26/12/2018)

#### EXCHANGE RATE USED IN BASIC FUEL PRICE



#### INTERNATIONAL PRODUCT PRICES OF BASKET USED IN BASIC FUEL PRICE



#### BASIC FUEL PRICE IN SA CENTS PER LITRE

