

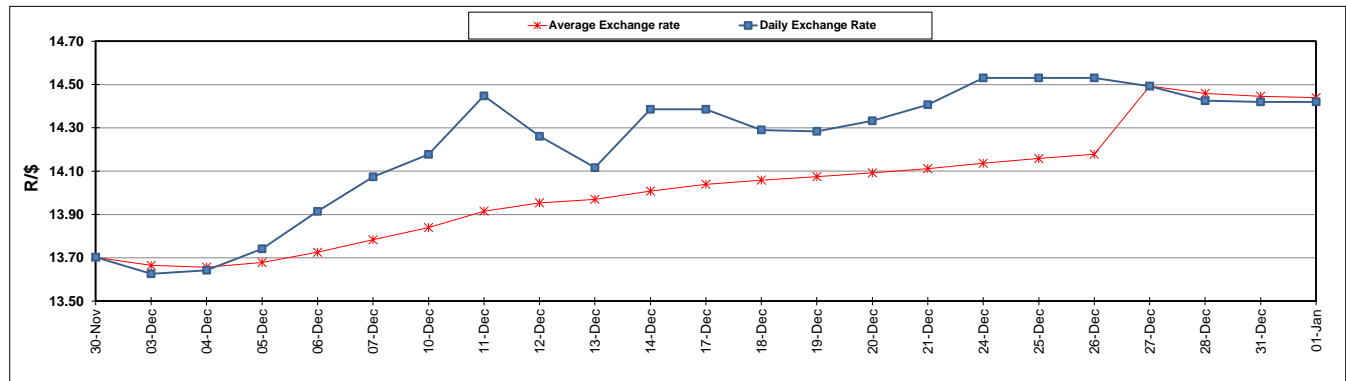
	PETROL 95 ULP	PETROL 93 ULP & LRP	DIESEL 0.05%	DIESEL 0.005%	ILL. PAR.
GAUTENG PUMP PRICE (SA c/l) AS FROM 02/01/2019	1 401.000	1 379.000	-	-	-
WHOLESALE PRICE (SA c/l) AS FROM 02/01/2019	-	-	1 313.420	1 316.820	828.678
SINGLE NATIONAL MAXIMUM RETAIL PRICE	-	-	-	-	1 067.000
BASIC FUEL PRICE - 01/01/2019 (SA c/l)	532.133	519.124	604.966	609.234	626.917
PRESS RELEASE CONTRIBUTION TO BFP 27/12/2018 - 01/01/2019 (SA c/l)	637.550	624.550	767.630	773.030	774.128
UNIT OVER/(UNDER) RECOVERY - 01/01/2019 (SA c/l)	105.417	105.426	162.664	163.796	147.211
AVERAGE BASIC FUEL PRICE 27/12/2018 - 01/01/2019	534.362	521.871	609.087	613.310	630.370
AVERAGE UNIT OVER/(UNDER) RECOVERY 27/12/2018 - 01/01/2019	103.188	102.680	158.543	159.721	143.759

ANALYSIS MOVEMENT OF AVERAGE OVER/(UNDER) RECOVERY

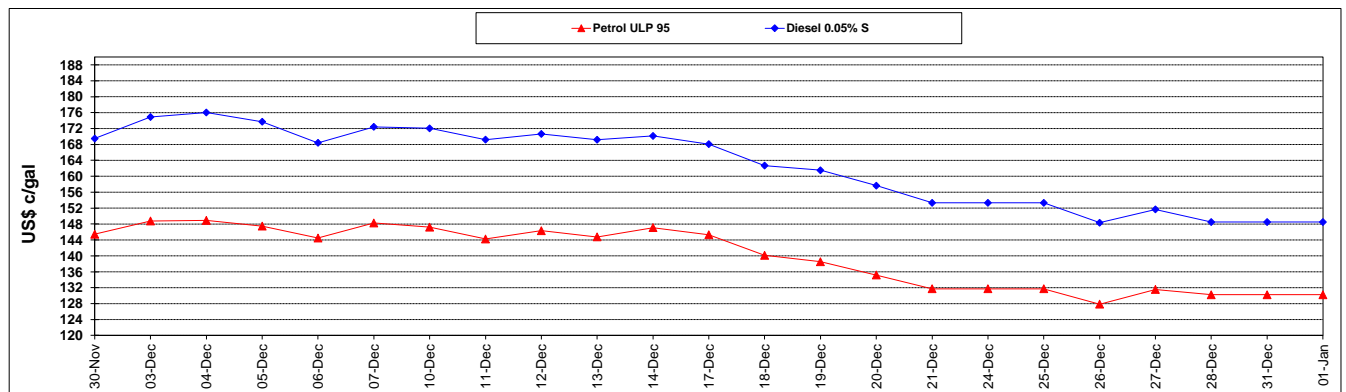
	PETROL 95	PETROL 93	DIESEL 0.05%	DIESEL 0.005%	ILL. PAR.
- MOVEMENT IN INTERNATIONAL PRODUCT PRICES	112.873	112.137	169.582	170.836	155.183
- MOVEMENT IN EXCHANGE RATE	(9.685)	(9.458)	(11.039)	(11.116)	(11.425)
AVERAGE UNIT OVER/(UNDER) RECOVERY 27/12/2018 - 01/01/2019	103.188	102.680	158.543	159.721	143.759

R/\$ EXCHANGE RATE - (R/\$14.4200 - 01/01/2019)

EXCHANGE RATE USED IN BASIC FUEL PRICE



INTERNATIONAL PRODUCT PRICES OF BASKET USED IN BASIC FUEL PRICE



BASIC FUEL PRICE IN SA CENTS PER LITRE

