

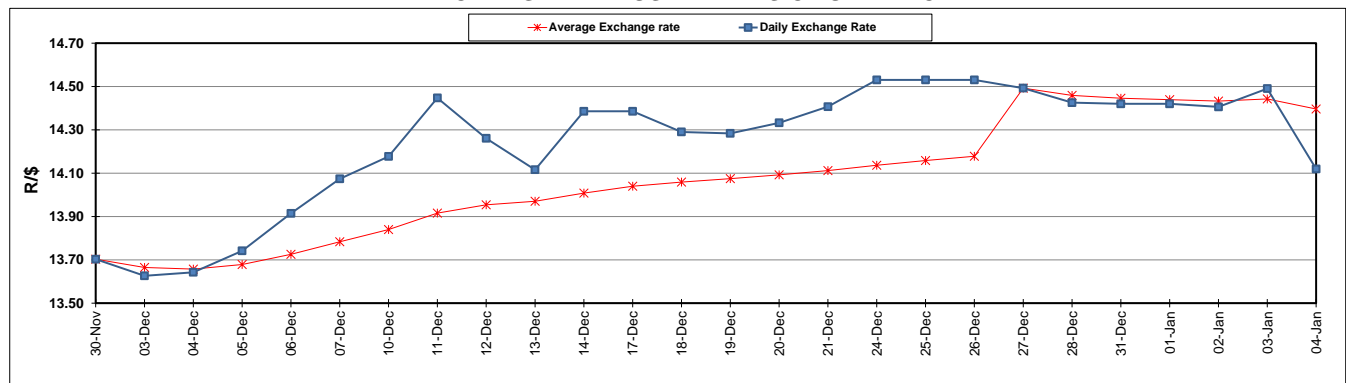
	PETROL 95 ULP	PETROL 93 ULP & LRP	DIESEL 0.05%	DIESEL 0.005%	ILL. PAR.
GAUTENG PUMP PRICE (SA c/l) AS FROM 02/01/2019	1 401.000	1 379.000	-	-	-
WHOLESALE PRICE (SA c/l) AS FROM 02/01/2019	-	-	1 313.420	1 316.820	828.678
SINGLE NATIONAL MAXIMUM RETAIL PRICE	-	-	-	-	1 067.000
BASIC FUEL PRICE - 04/01/2019 (SA c/l)	557.965	544.157	635.099	638.895	647.251
PRESS RELEASE CONTRIBUTION TO BFP 02/01/2018 - 04/01/2019 (SA c/l)	536.470	524.470	635.630	638.030	651.128
UNIT OVER/(UNDER) RECOVERY - 04/01/2019 (SA c/l)	(21.495)	(19.687)	0.531	(0.865)	3.877
AVERAGE BASIC FUEL PRICE 27/12/2018 - 04/01/2019	541.064	528.351	615.901	620.211	635.233
AVERAGE UNIT OVER/(UNDER) RECOVERY 27/12/2018 - 04/01/2019	53.166	53.308	95.158	94.962	86.181

ANALYSIS MOVEMENT OF AVERAGE OVER/(UNDER) RECOVERY

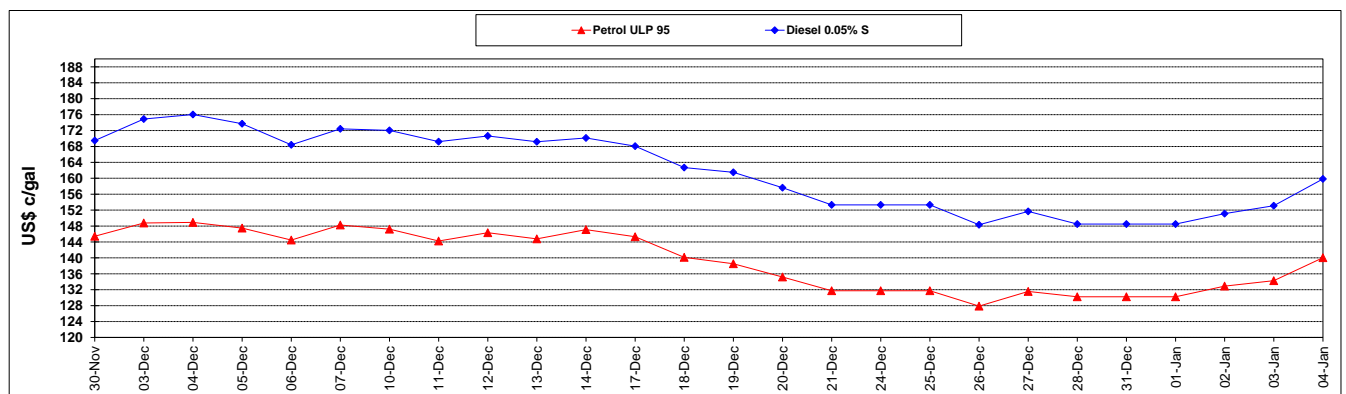
	PETROL 95	PETROL 93	DIESEL 0.05%	DIESEL 0.005%	ILL. PAR.
- MOVEMENT IN INTERNATIONAL PRODUCT PRICES	61.374	61.323	104.502	104.371	95.818
- MOVEMENT IN EXCHANGE RATE	(8.208)	(8.015)	(9.344)	(9.409)	(9.637)
AVERAGE UNIT OVER/(UNDER) RECOVERY 27/12/2018 - 04/01/2019	53.166	53.308	95.158	94.962	86.181

R/\$ EXCHANGE RATE - (R/\$14.1195 - 04/01/2019)

EXCHANGE RATE USED IN BASIC FUEL PRICE



INTERNATIONAL PRODUCT PRICES OF BASKET USED IN BASIC FUEL PRICE



BASIC FUEL PRICE IN SA CENTS PER LITRE

