

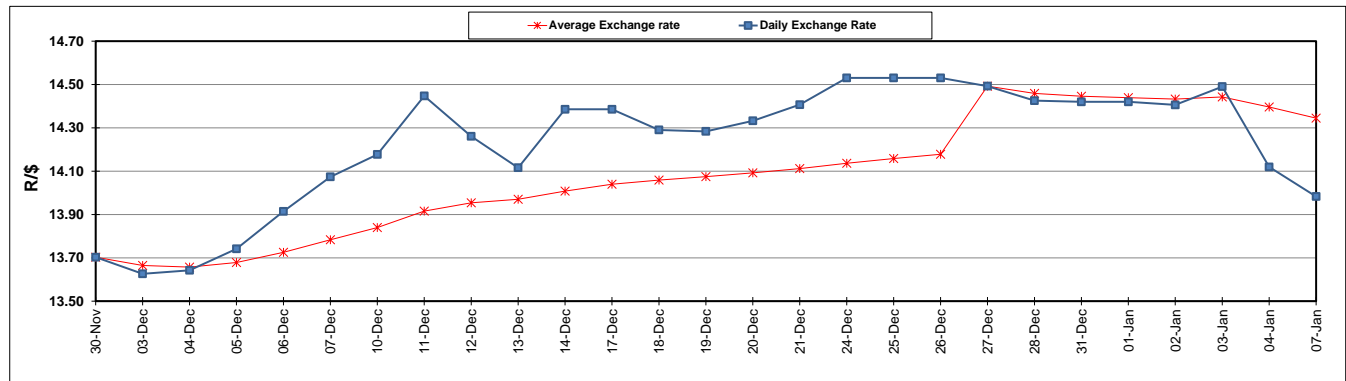
	PETROL 95 ULP	PETROL 93 ULP & LRP	DIESEL 0.05%	DIESEL 0.005%	ILL. PAR.
GAUTENG PUMP PRICE (SA c/l) AS FROM 02/01/2019	1 401.000	1 379.000	-	-	-
WHOLESALE PRICE (SA c/l) AS FROM 02/01/2019	-	-	1 313.420	1 316.820	828.678
SINGLE NATIONAL MAXIMUM RETAIL PRICE	-	-	-	-	1 067.000
BASIC FUEL PRICE - 07/01/2019 (SA c/l)	564.280	550.607	649.284	652.732	659.568
PRESS RELEASE CONTRIBUTION TO BFP 02/01/2018 - 07/01/2019 (SA c/l)	536.470	524.470	635.630	638.030	651.128
UNIT OVER/(UNDER) RECOVERY - 07/01/2019 (SA c/l)	(27.810)	(26.137)	(13.654)	(14.702)	(8.440)
AVERAGE BASIC FUEL PRICE 27/12/2018 - 07/01/2019	543.966	531.133	620.074	624.276	638.275
AVERAGE UNIT OVER/(UNDER) RECOVERY 27/12/2018 - 07/01/2019	43.044	43.377	81.556	81.254	74.353

ANALYSIS MOVEMENT OF AVERAGE OVER/(UNDER) RECOVERY

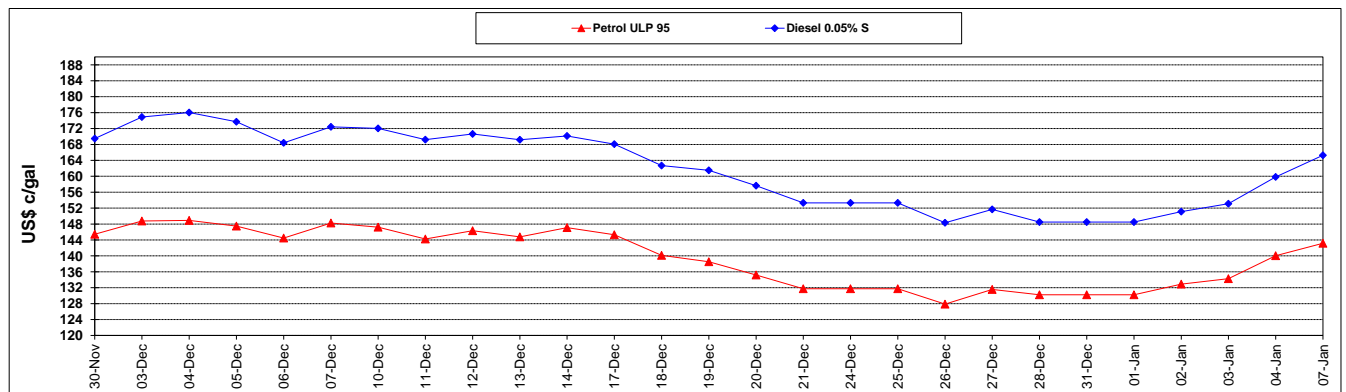
	PETROL 95	PETROL 93	DIESEL 0.05%	DIESEL 0.005%	ILL. PAR.
- MOVEMENT IN INTERNATIONAL PRODUCT PRICES	49.369	49.553	88.766	88.513	81.775
- MOVEMENT IN EXCHANGE RATE	(6.325)	(6.176)	(7.210)	(7.259)	(7.422)
AVERAGE UNIT OVER/(UNDER) RECOVERY 27/12/2018 - 07/01/2019	43.044	43.377	81.556	81.254	74.353

R/\$ EXCHANGE RATE - (R/\$13.9830 - 07/01/2019)

EXCHANGE RATE USED IN BASIC FUEL PRICE



INTERNATIONAL PRODUCT PRICES OF BASKET USED IN BASIC FUEL PRICE



BASIC FUEL PRICE IN SA CENTS PER LITRE

