

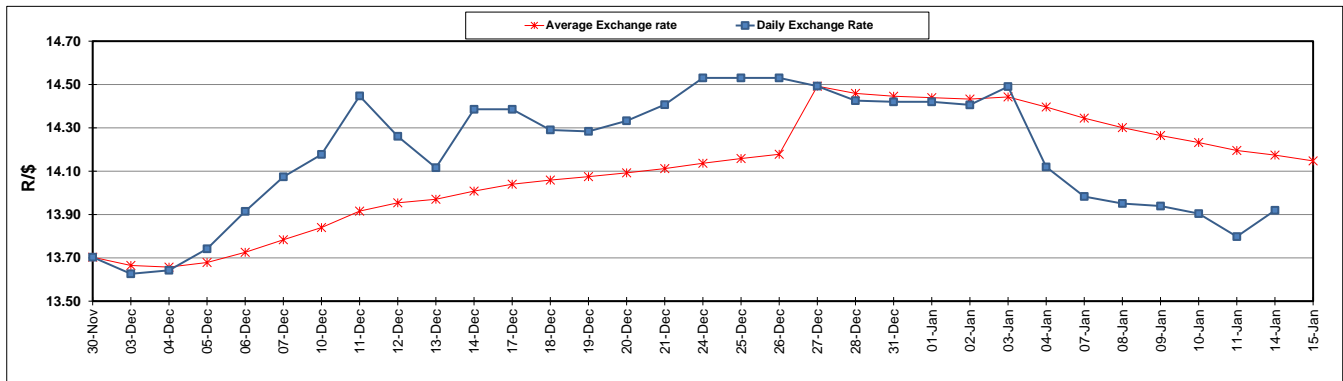
	PETROL 95 ULP	PETROL 93 ULP & LRP	DIESEL 0.05%	DIESEL 0.005%	ILL. PAR.
GAUTENG PUMP PRICE (SA c/l) AS FROM 02/01/2019	1 401.000	1 379.000	-	-	-
WHOLESALE PRICE (SA c/l) AS FROM 02/01/2019	-	-	1 313.420	1 316.820	828.678
SINGLE NATIONAL MAXIMUM RETAIL PRICE	-	-	-	-	1 067.000
BASIC FUEL PRICE - 15/01/2019 (SA c/l)	562.865	552.158	662.832	667.307	667.471
PRESS RELEASE CONTRIBUTION TO BFP 02/01/2018 - 15/01/2019 (SA c/l)	536.470	524.470	635.630	638.030	651.128
UNIT OVER/(UNDER) RECOVERY - 15/01/2019 (SA c/l)	(26.395)	(27.688)	(27.202)	(29.277)	(16.343)
AVERAGE BASIC FUEL PRICE 27/12/2018 - 15/01/2019	556.370	544.264	642.301	646.437	656.658
AVERAGE UNIT OVER/(UNDER) RECOVERY 27/12/2018 - 15/01/2019	8.980	8.800	31.043	30.165	29.613

ANALYSIS MOVEMENT OF AVERAGE OVER/(UNDER) RECOVERY

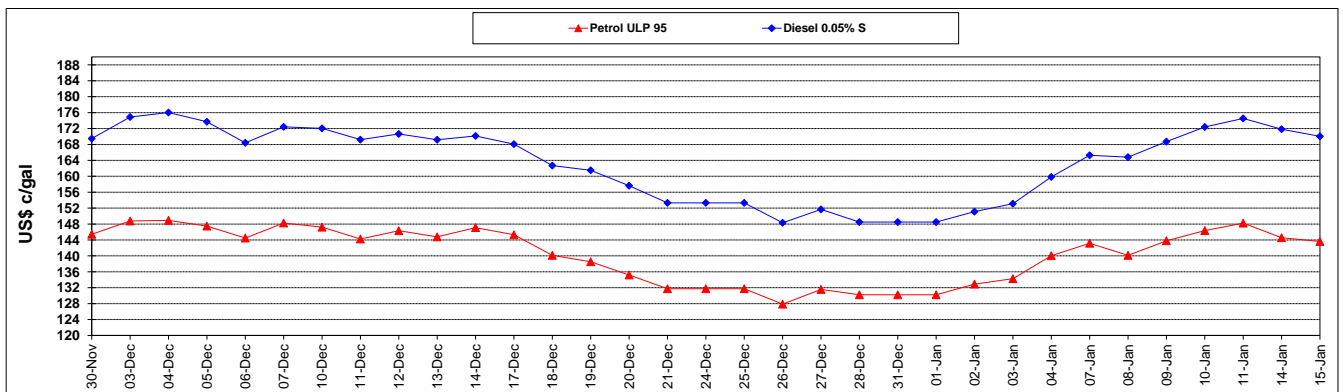
	PETROL 95	PETROL 93	DIESEL 0.05%	DIESEL 0.005%	ILL. PAR.
- MOVEMENT IN INTERNATIONAL PRODUCT PRICES	7.796	7.642	29.676	28.789	28.216
- MOVEMENT IN EXCHANGE RATE	1.184	1.158	1.367	1.375	1.397
AVERAGE UNIT OVER/(UNDER) RECOVERY 27/12/2018 - 15/01/2019	8.980	8.800	31.043	30.165	29.613

R/\$ EXCHANGE RATE - (R/\$13.8000 - 15/01/2019)

EXCHANGE RATE USED IN BASIC FUEL PRICE



INTERNATIONAL PRODUCT PRICES OF BASKET USED IN BASIC FUEL PRICE



BASIC FUEL PRICE IN SA CENTS PER LITRE

