

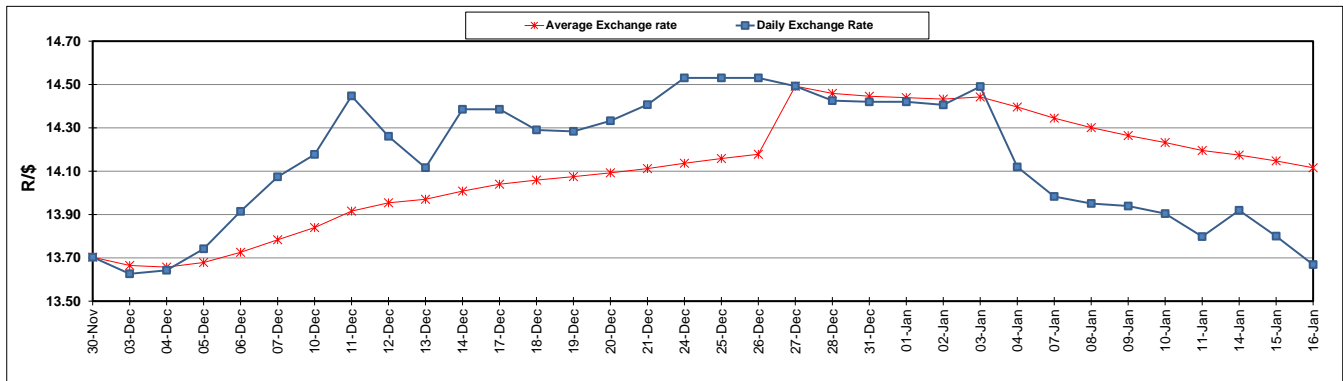
	PETROL 95 ULP	PETROL 93 ULP & LRP	DIESEL 0.05%	DIESEL 0.005%	ILL. PAR.
GAUTENG PUMP PRICE (SA c/l) AS FROM 02/01/2019	1 401.000	1 379.000	-	-	-
WHOLESALE PRICE (SA c/l) AS FROM 02/01/2019	-	-	1 313.420	1 316.820	828.678
SINGLE NATIONAL MAXIMUM RETAIL PRICE	-	-	-	-	1 067.000
BASIC FUEL PRICE - 16/01/2019 (SA c/l)	564.030	553.425	666.679	671.623	668.678
PRESS RELEASE CONTRIBUTION TO BFP 02/01/2018 - 16/01/2019 (SA c/l)	536.470	524.470	635.630	639.030	651.128
UNIT OVER/(UNDER) RECOVERY - 16/01/2019 (SA c/l)	(27.560)	(28.955)	(31.049)	(32.593)	(17.550)
AVERAGE BASIC FUEL PRICE 27/12/2018 - 16/01/2019	556.881	544.875	643.926	648.116	657.459
AVERAGE UNIT OVER/(UNDER) RECOVERY 27/12/2018 - 16/01/2019	6.544	6.283	26.904	26.647	26.469

ANALYSIS MOVEMENT OF AVERAGE OVER/(UNDER) RECOVERY

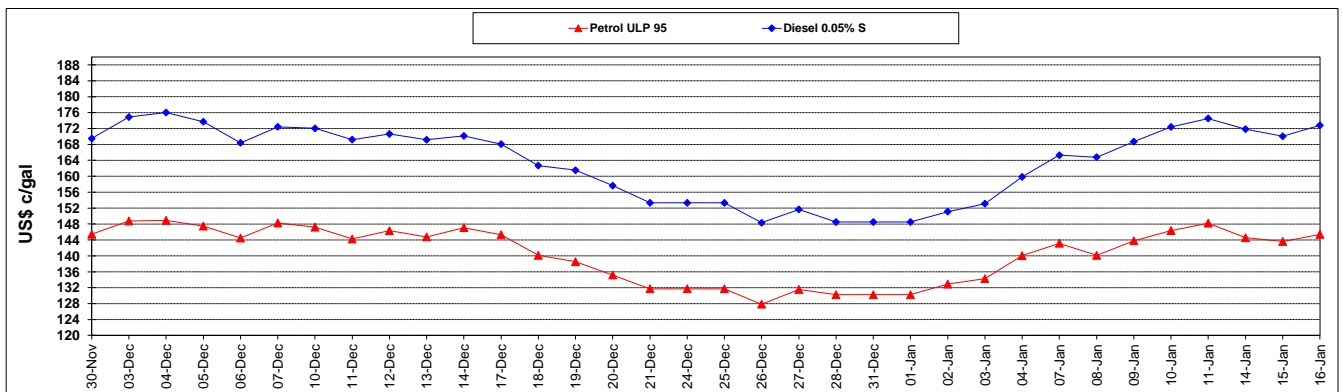
	PETROL 95	PETROL 93	DIESEL 0.05%	DIESEL 0.005%	ILL. PAR.
- MOVEMENT IN INTERNATIONAL PRODUCT PRICES	4.094	3.886	24.071	23.796	23.577
- MOVEMENT IN EXCHANGE RATE	2.450	2.397	2.833	2.851	2.892
AVERAGE UNIT OVER/(UNDER) RECOVERY 27/12/2018 - 16/01/2019	6.544	6.283	26.904	26.647	26.469

R/\$ EXCHANGE RATE - (R/\$13.6688 - 16/01/2019)

EXCHANGE RATE USED IN BASIC FUEL PRICE



INTERNATIONAL PRODUCT PRICES OF BASKET USED IN BASIC FUEL PRICE



BASIC FUEL PRICE IN SA CENTS PER LITRE

