

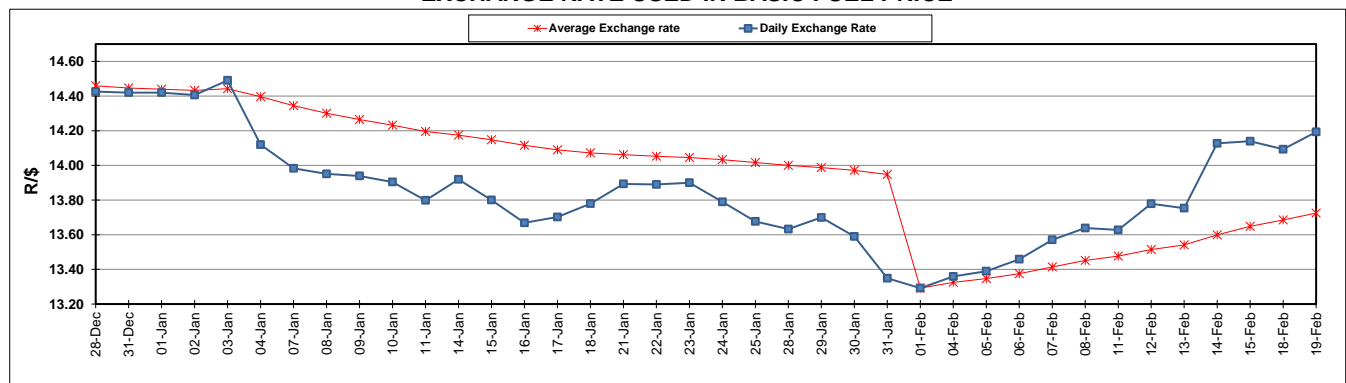
	PETROL 95 ULP	PETROL 93 ULP & LRP	DIESEL 0.05%	DIESEL 0.005%	ILL. PAR.
GAUTENG PUMP PRICE (SA c/l) AS FROM 06/02/2019	1 408.000	1 386.000	-	-	-
WHOLESALE PRICE (SA c/l) AS FROM 06/02/2019	-	-	1 314.420	1 318.820	823.678
SINGLE NATIONAL MAXIMUM RETAIL PRICE	-	-	-	-	1 060.000
BASIC FUEL PRICE - 19/02/2019 (SA c/l)	651.571	640.502	766.277	772.642	761.792
PRESS RELEASE CONTRIBUTION TO BFP 06/02/2019 - 19/02/2019 (SA c/l)	543.470	531.470	636.630	641.030	646.128
UNIT OVER/(UNDER) RECOVERY - 19/02/2019 (SA c/l)	(108.101)	(109.032)	(129.647)	(131.612)	(115.664)
AVERAGE BASIC FUEL PRICE 01/02/2019 - 19/02/2019	598.407	587.027	711.551	717.443	709.219
AVERAGE UNIT OVER/(UNDER) RECOVERY 01/02/2019 - 19/02/2019	(56.553)	(57.172)	(75.152)	(76.875)	(61.937)

### ANALYSIS MOVEMENT OF AVERAGE OVER/(UNDER) RECOVERY

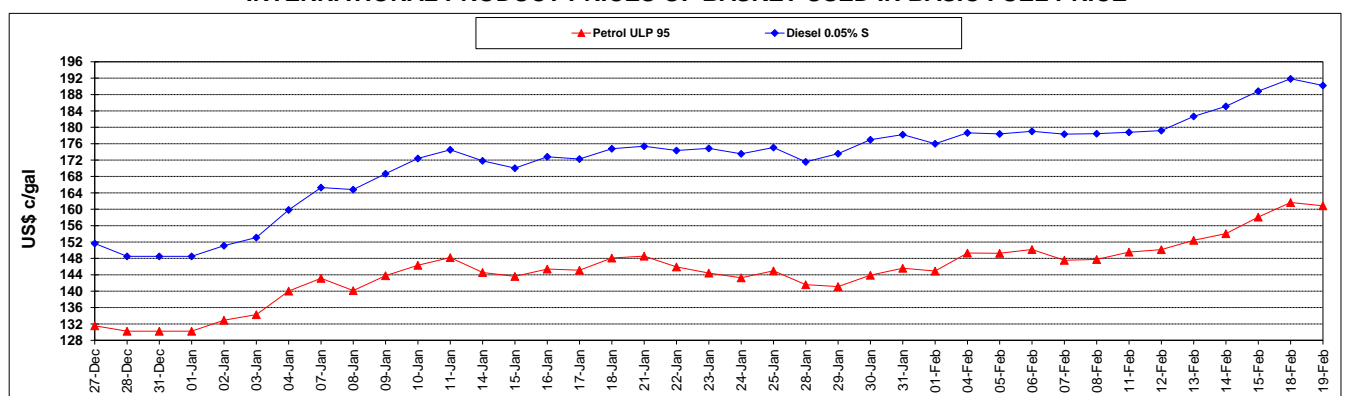
	PETROL 95	PETROL 93	DIESEL 0.05%	DIESEL 0.005%	ILL. PAR.
- MOVEMENT IN INTERNATIONAL PRODUCT PRICES	(67.317)	(67.732)	(87.953)	(89.782)	(74.696)
- MOVEMENT IN EXCHANGE RATE	10.765	10.560	12.801	12.907	12.759
AVERAGE UNIT OVER/(UNDER) RECOVERY 01/02/2019 - 19/02/2019	(56.553)	(57.172)	(75.152)	(76.875)	(61.937)

### R/\$ EXCHANGE RATE - (R/\$14.1930 - 19/02/2019)

#### EXCHANGE RATE USED IN BASIC FUEL PRICE



#### INTERNATIONAL PRODUCT PRICES OF BASKET USED IN BASIC FUEL PRICE



#### BASIC FUEL PRICE IN SA CENTS PER LITRE

