

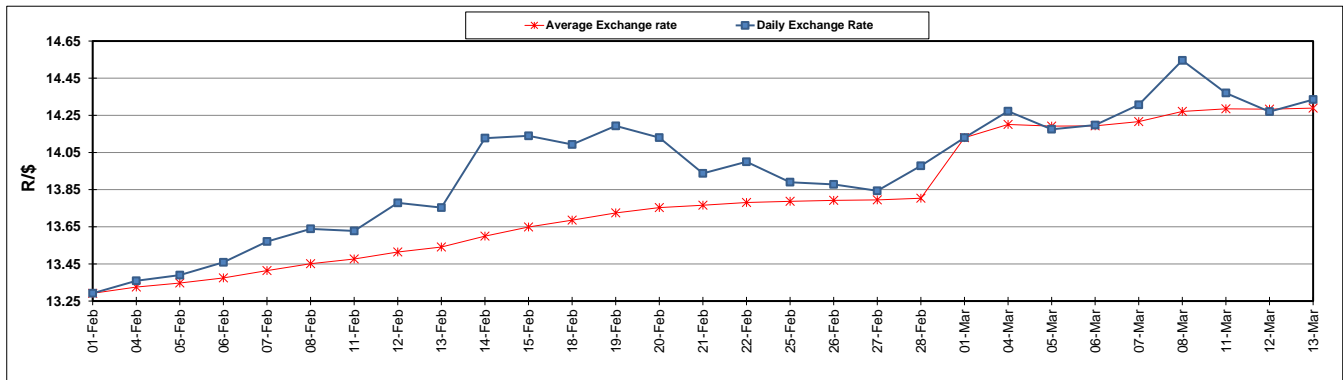
	PETROL 95 ULP	PETROL 93 ULP & LRP	DIESEL 0.05%	DIESEL 0.005%	ILL. PAR.
GAUTENG PUMP PRICE (SA c/l) AS FROM 06/03/2019	1 482.000	1 460.000	-	-	-
WHOLESALE PRICE (SA c/l) AS FROM 06/03/2019	-	-	1 405.420	1 411.820	899.678
SINGLE NATIONAL MAXIMUM RETAIL PRICE	-	-	-	-	1 162.000
BASIC FUEL PRICE - 13/03/2019 (SA c/l)	708.758	699.100	765.654	773.023	765.787
PRESS RELEASE CONTRIBUTION TO BFP 06/03/2019 - 13/03/2019 (SA c/l)	617.470	605.470	727.630	734.030	722.128
UNIT OVER/(UNDER) RECOVERY - 13/03/2019 (SA c/l)	(91.288)	(93.630)	(38.024)	(38.993)	(43.659)
AVERAGE BASIC FUEL PRICE 01/03/2019 - 13/03/2019	687.064	676.992	768.204	775.817	760.909
AVERAGE UNIT OVER/(UNDER) RECOVERY 01/03/2019 - 13/03/2019	(94.261)	(96.189)	(70.907)	(72.787)	(64.114)

ANALYSIS MOVEMENT OF AVERAGE OVER/(UNDER) RECOVERY

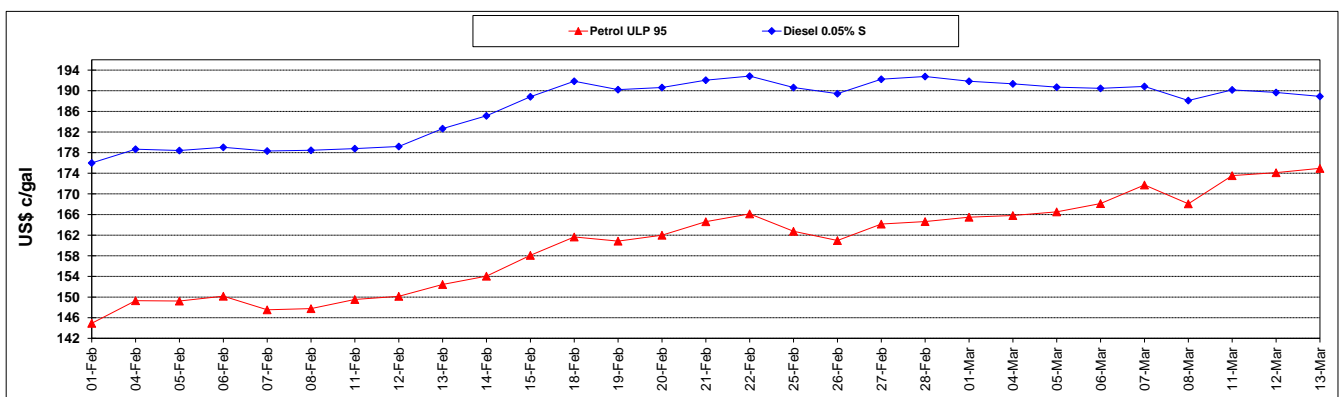
	PETROL 95	PETROL 93	DIESEL 0.05%	DIESEL 0.005%	ILL. PAR.
- MOVEMENT IN INTERNATIONAL PRODUCT PRICES	(70.931)	(73.201)	(44.822)	(46.443)	(38.276)
- MOVEMENT IN EXCHANGE RATE	(23.330)	(22.988)	(26.085)	(26.344)	(25.838)
AVERAGE UNIT OVER/(UNDER) RECOVERY 01/03/2019 - 13/03/2019	(94.261)	(96.189)	(70.907)	(72.787)	(64.114)

R/\$ EXCHANGE RATE - (R/\$14.3350 - 13/03/2019)

EXCHANGE RATE USED IN BASIC FUEL PRICE



INTERNATIONAL PRODUCT PRICES OF BASKET USED IN BASIC FUEL PRICE



BASIC FUEL PRICE IN SA CENTS PER LITRE

