

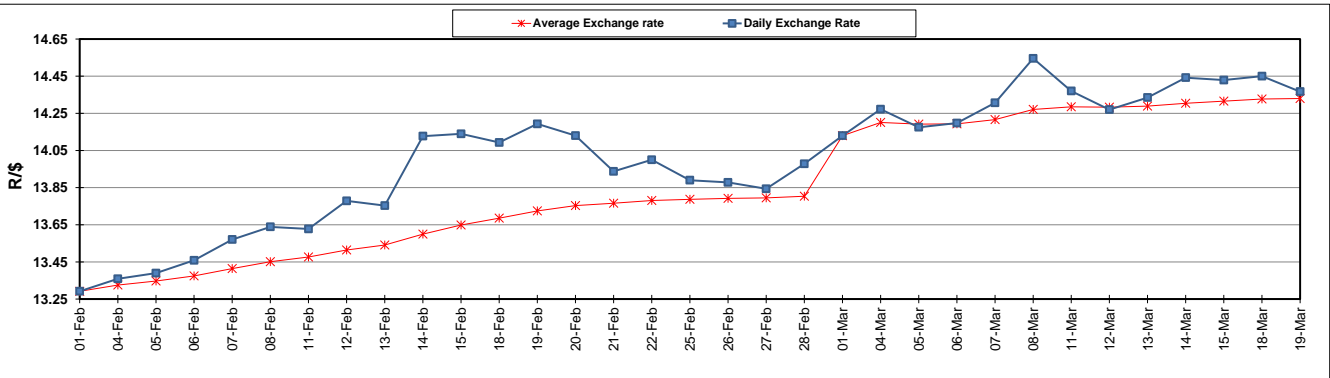
| | PETROL 95 ULP | PETROL 93 ULP & LRP | DIESEL 0.05% | DIESEL 0.005% | ILL. PAR. |
|--|------------------|------------------------|-----------------|------------------|-----------|
| GAUTENG PUMP PRICE (SA c/l) AS FROM 06/03/2019 | 1 482.000 | 1 460.000 | - | - | - |
| WHOLESALE PRICE (SA c/l) AS FROM 06/03/2019 | - | - | 1 405.420 | 1 411.820 | 899.678 |
| SINGLE NATIONAL MAXIMUM RETAIL PRICE | - | - | - | - | 1 162.000 |
| BASIC FUEL PRICE - 19/03/2019 (SA c/l) | 723.368 | 712.949 | 767.533 | 774.672 | 765.316 |
| PRESS RELEASE CONTRIBUTION TO BFP 06/03/2019 - 19/03/2019 (SA c/l) | 617.470 | 605.470 | 727.630 | 734.030 | 722.128 |
| UNIT OVER/(UNDER) RECOVERY - 19/03/2019 (SA c/l) | (105.898) | (107.479) | (39.903) | (40.642) | (43.188) |
| AVERAGE BASIC FUEL PRICE 01/03/2019 - 19/03/2019 | 697.872 | 687.736 | 768.869 | 776.358 | 763.459 |
| AVERAGE UNIT OVER/(UNDER) RECOVERY 01/03/2019 - 19/03/2019 | (97.479) | (99.343) | (62.239) | (63.789) | (58.869) |

ANALYSIS MOVEMENT OF AVERAGE OVER/(UNDER) RECOVERY

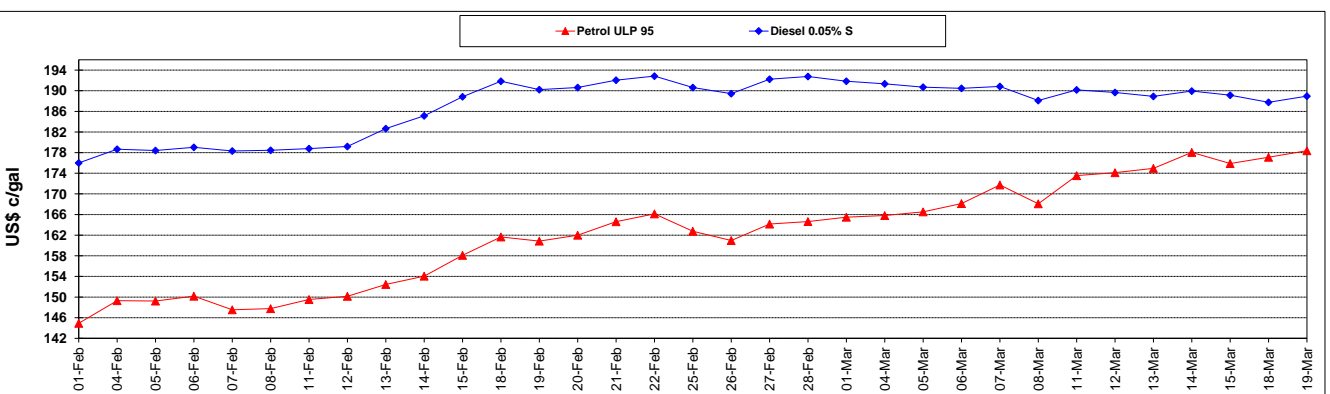
| | PETROL 95 | PETROL 93 | DIESEL 0.05% | DIESEL 0.005% | ILL. PAR. |
|--|-----------|-----------|--------------|---------------|-----------|
| - MOVEMENT IN INTERNATIONAL PRODUCT PRICES | (71.858) | (74.094) | (34.011) | (35.287) | (30.840) |
| - MOVEMENT IN EXCHANGE RATE | (25.621) | (25.249) | (28.228) | (28.503) | (28.029) |
| AVERAGE UNIT OVER/(UNDER) RECOVERY 01/03/2019 - 19/03/2019 | (97.479) | (99.343) | (62.239) | (63.789) | (58.869) |

R/\$ EXCHANGE RATE - (R/\$14.3670 - 19/03/2019)

EXCHANGE RATE USED IN BASIC FUEL PRICE



INTERNATIONAL PRODUCT PRICES OF BASKET USED IN BASIC FUEL PRICE



BASIC FUEL PRICE IN SA CENTS PER LITRE

