

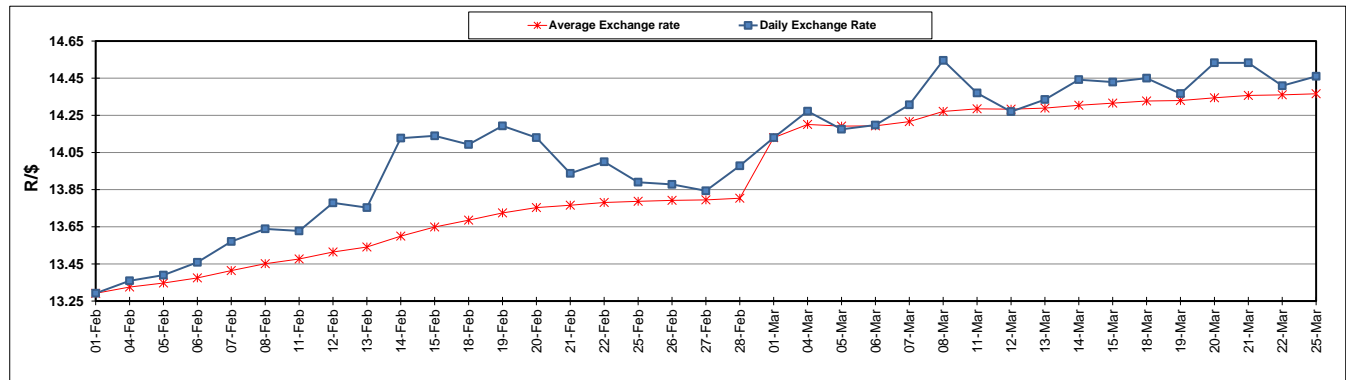
	PETROL 95 ULP	PETROL 93 ULP & LRP	DIESEL 0.05%	DIESEL 0.005%	ILL. PAR.
GAUTENG PUMP PRICE (SA c/l) AS FROM 06/03/2019	1 482.000	1 460.000	-	-	-
WHOLESALE PRICE (SA c/l) AS FROM 06/03/2019	-	-	1 405.420	1 411.820	899.678
SINGLE NATIONAL MAXIMUM RETAIL PRICE	-	-	-	-	1 162.000
BASIC FUEL PRICE - 25/03/2019 (SA c/l)	736.321	727.310	762.994	770.487	765.817
PRESS RELEASE CONTRIBUTION TO BFP 06/03/2019 - 25/03/2019 (SA c/l)	617.470	605.470	727.630	734.030	722.128
UNIT OVER/(UNDER) RECOVERY - 25/03/2019 (SA c/l)	(118.851)	(121.840)	(35.364)	(36.457)	(43.689)
AVERAGE BASIC FUEL PRICE 01/03/2019 - 25/03/2019	707.491	697.618	769.665	777.052	765.893
AVERAGE UNIT OVER/(UNDER) RECOVERY 01/03/2019 - 25/03/2019	(103.080)	(105.207)	(58.093)	(59.434)	(57.177)

### ANALYSIS MOVEMENT OF AVERAGE OVER/(UNDER) RECOVERY

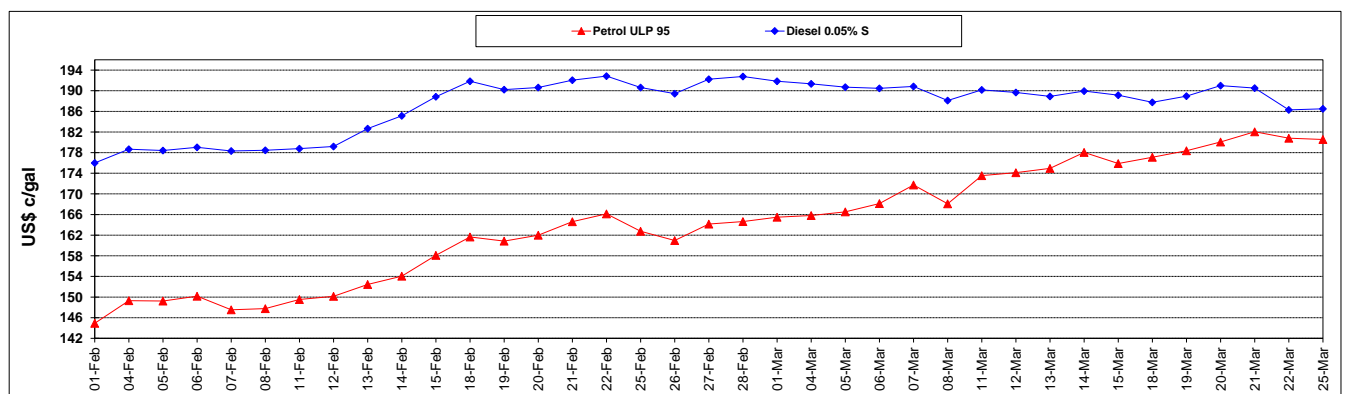
	PETROL 95	PETROL 93	DIESEL 0.05%	DIESEL 0.005%	ILL. PAR.
- MOVEMENT IN INTERNATIONAL PRODUCT PRICES	(75.388)	(77.902)	(27.969)	(29.020)	(27.199)
- MOVEMENT IN EXCHANGE RATE	(27.692)	(27.305)	(30.125)	(30.414)	(29.978)
AVERAGE UNIT OVER/(UNDER) RECOVERY 01/03/2019 - 25/03/2019	(103.080)	(105.207)	(58.093)	(59.434)	(57.177)

**R/\$ EXCHANGE RATE - (R/\$14.4600 - 25/03/2019)**

### EXCHANGE RATE USED IN BASIC FUEL PRICE



### INTERNATIONAL PRODUCT PRICES OF BASKET USED IN BASIC FUEL PRICE



### BASIC FUEL PRICE IN SA CENTS PER LITRE

