

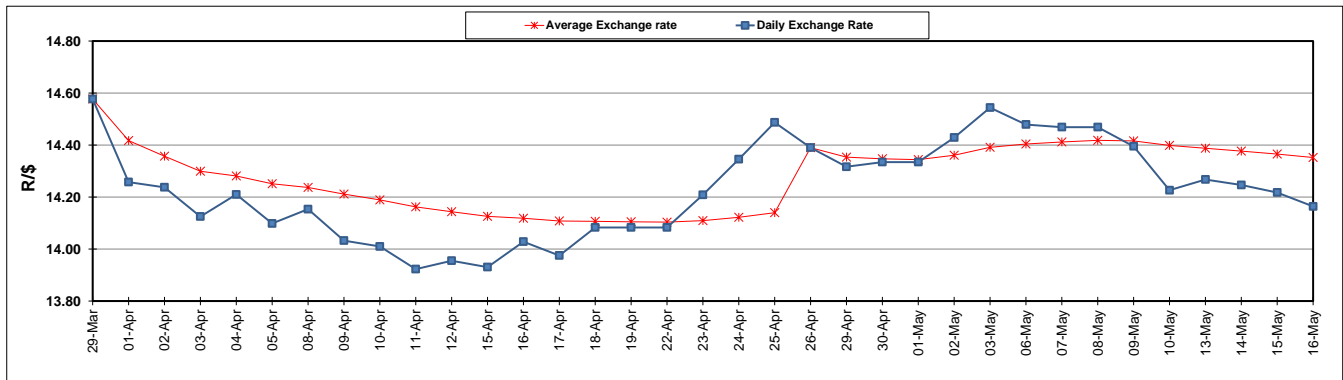
	PETROL 95 ULP	PETROL 93 ULP & LRP	DIESEL 0.05%	DIESEL 0.005%	ILL. PAR.
GAUTENG PUMP PRICE (SA c/l) AS FROM 01/05/2019	1 667.000	1 648.000	-	-	-
WHOLESALE PRICE (SA c/l) AS FROM 01/05/2019	-	-	1 488.120	1 494.520	965.678
SINGLE NATIONAL MAXIMUM RETAIL PRICE	-	-	-	-	1 231.000
BASIC FUEL PRICE - 16/05/2019 (SA c/l)	760.717	749.972	808.144	816.758	805.029
PRESS RELEASE CONTRIBUTION TO BFP 01/05/2019 - 16/05/2019 (SA c/l)	777.170	768.170	784.630	791.030	781.128
UNIT OVER/(UNDER) RECOVERY - 16/05/2019 (SA c/l)	16.453	18.198	(23.514)	(25.728)	(23.901)
AVERAGE BASIC FUEL PRICE 26/04/2019 - 16/05/2019	759.257	748.205	796.730	803.628	790.663
AVERAGE UNIT OVER/(UNDER) RECOVERY 26/04/2019 - 16/05/2019	7.113	9.165	(12.300)	(12.598)	(10.135)

### ANALYSIS MOVEMENT OF AVERAGE OVER/(UNDER) RECOVERY

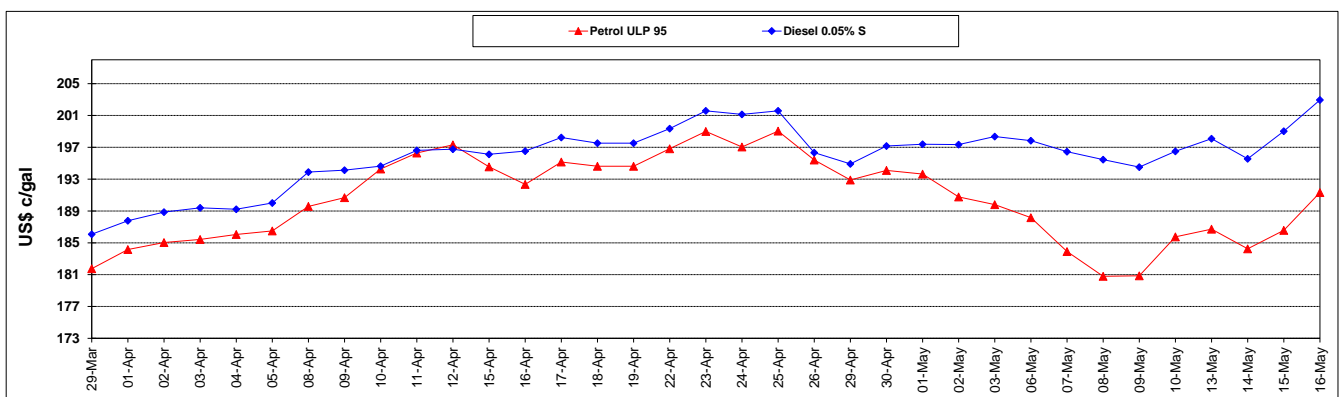
	PETROL 95	PETROL 93	DIESEL 0.05%	DIESEL 0.005%	ILL. PAR.
- MOVEMENT IN INTERNATIONAL PRODUCT PRICES	18.328	20.217	(0.531)	(0.727)	1.544
- MOVEMENT IN EXCHANGE RATE	(11.215)	(11.052)	(11.769)	(11.871)	(11.679)
AVERAGE UNIT OVER/(UNDER) RECOVERY 26/04/2019 - 16/05/2019	7.113	9.165	(12.300)	(12.598)	(10.135)

### R/\$ EXCHANGE RATE - (R/\$14.1638 - 16/05/2019)

#### EXCHANGE RATE USED IN BASIC FUEL PRICE



#### INTERNATIONAL PRODUCT PRICES OF BASKET USED IN BASIC FUEL PRICE



#### BASIC FUEL PRICE IN SA CENTS PER LITRE

